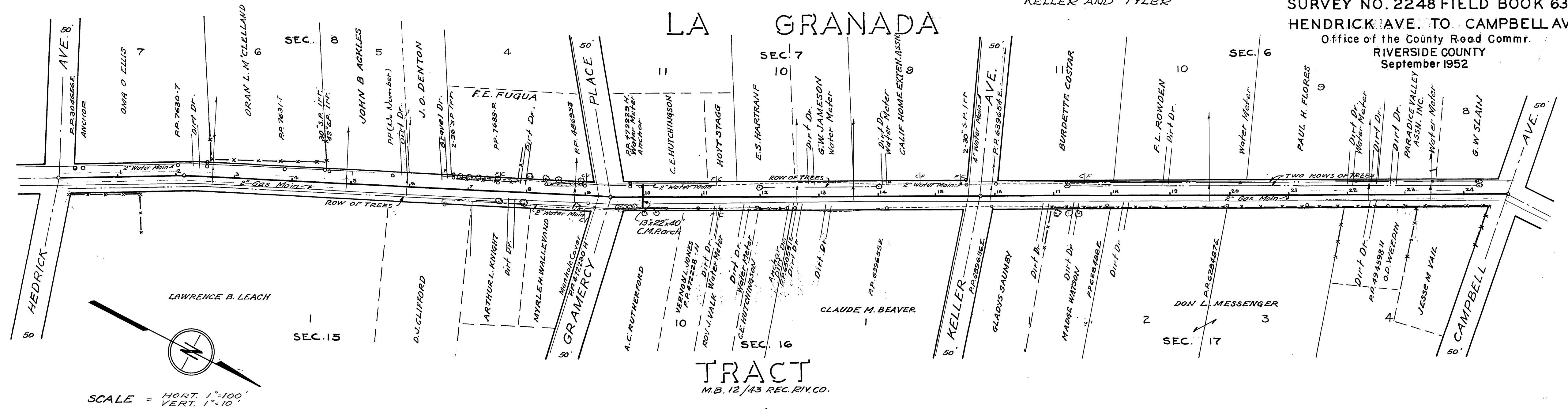


# TYLER AVENUE

ROAD NO. 1443 WORK ORDER 255  
 SURVEY NO. 2248 FIELD BOOK 630  
 HENDRICK AVE. TO CAMPBELL AVE.  
 Office of the County Road Commr.  
 RIVERSIDE COUNTY  
 September 1952

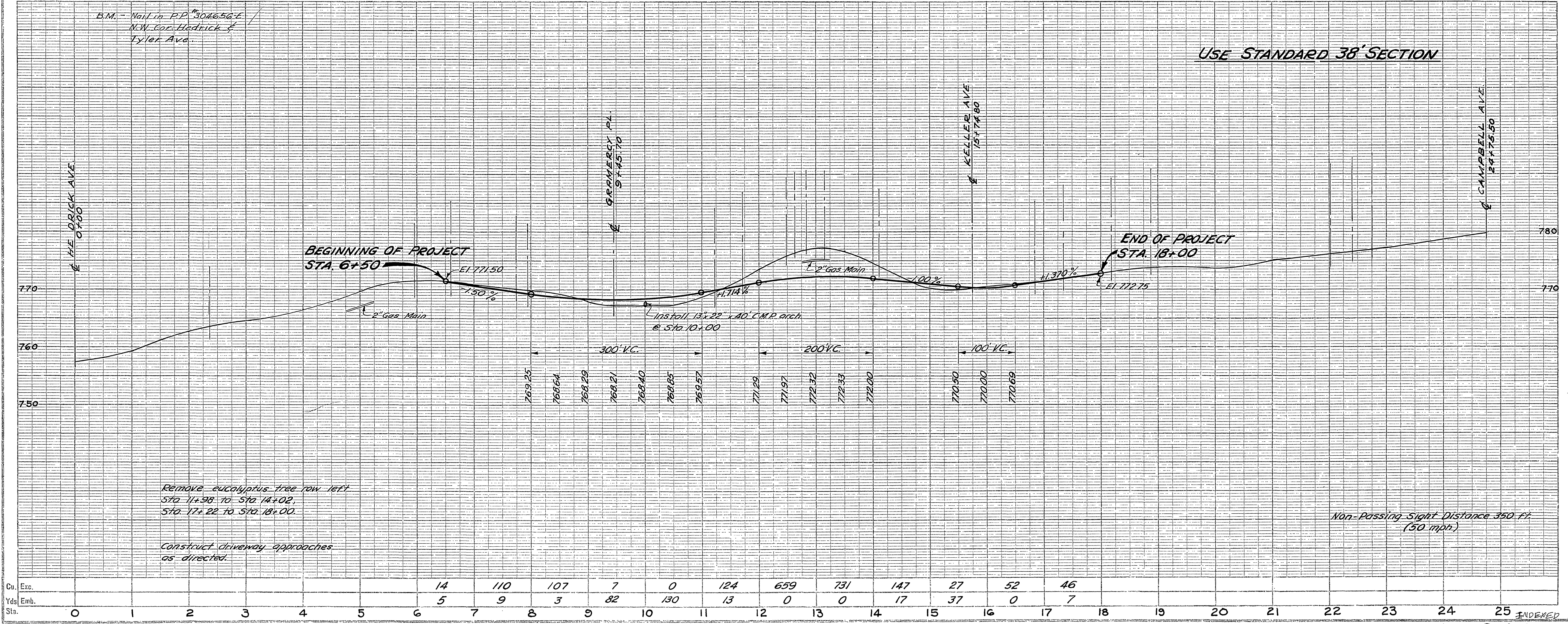
SEE D-292 FOR S.D. ON  
 KELLER AND TYLER



SCALE = HORT. 1"=100'  
 VERT. 1"=10'

TRACT  
 M.B. 12/43 REC. RIV. CO.

USE STANDARD 38' SECTION



B.M. - Nail in R.P. 304656 E  
 N.W. Cor. Hendrick &  
 Tyler Ave.

Remove eucalyptus tree row left  
 Sta. 11+98 to Sta. 14+02  
 Sta. 17+22 to Sta. 18+00.

Construct driveway approaches  
 as directed.

Non-Passing Sight Distance 350 Ft.  
 (50 mph)

708-C