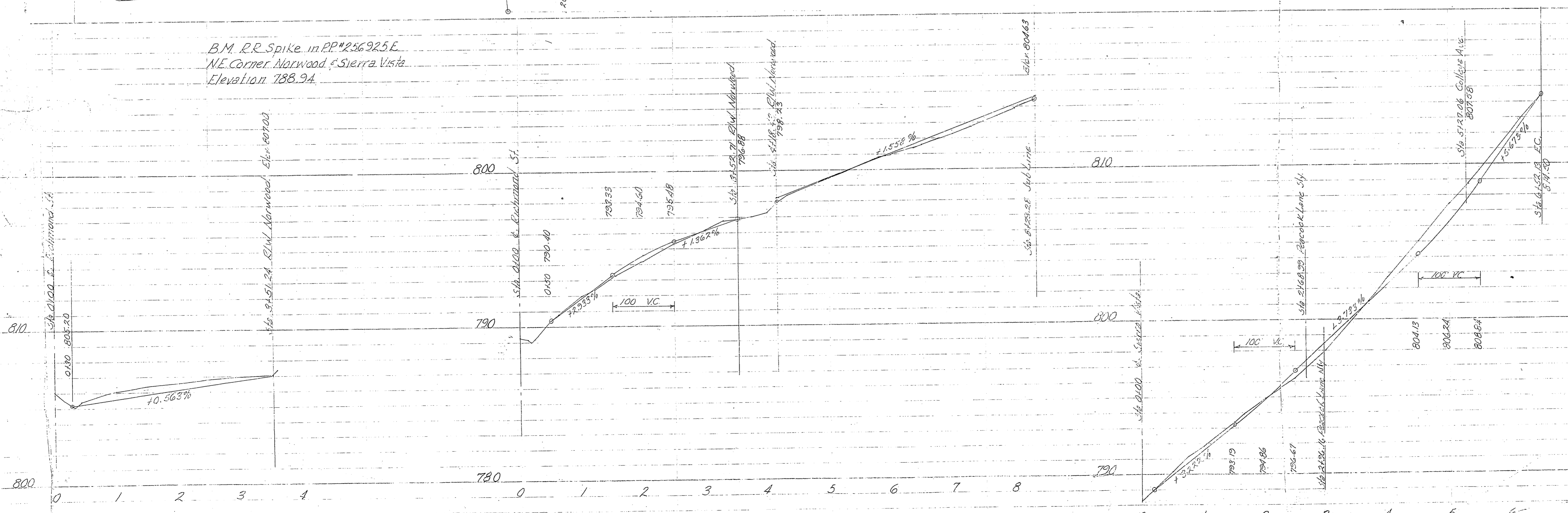


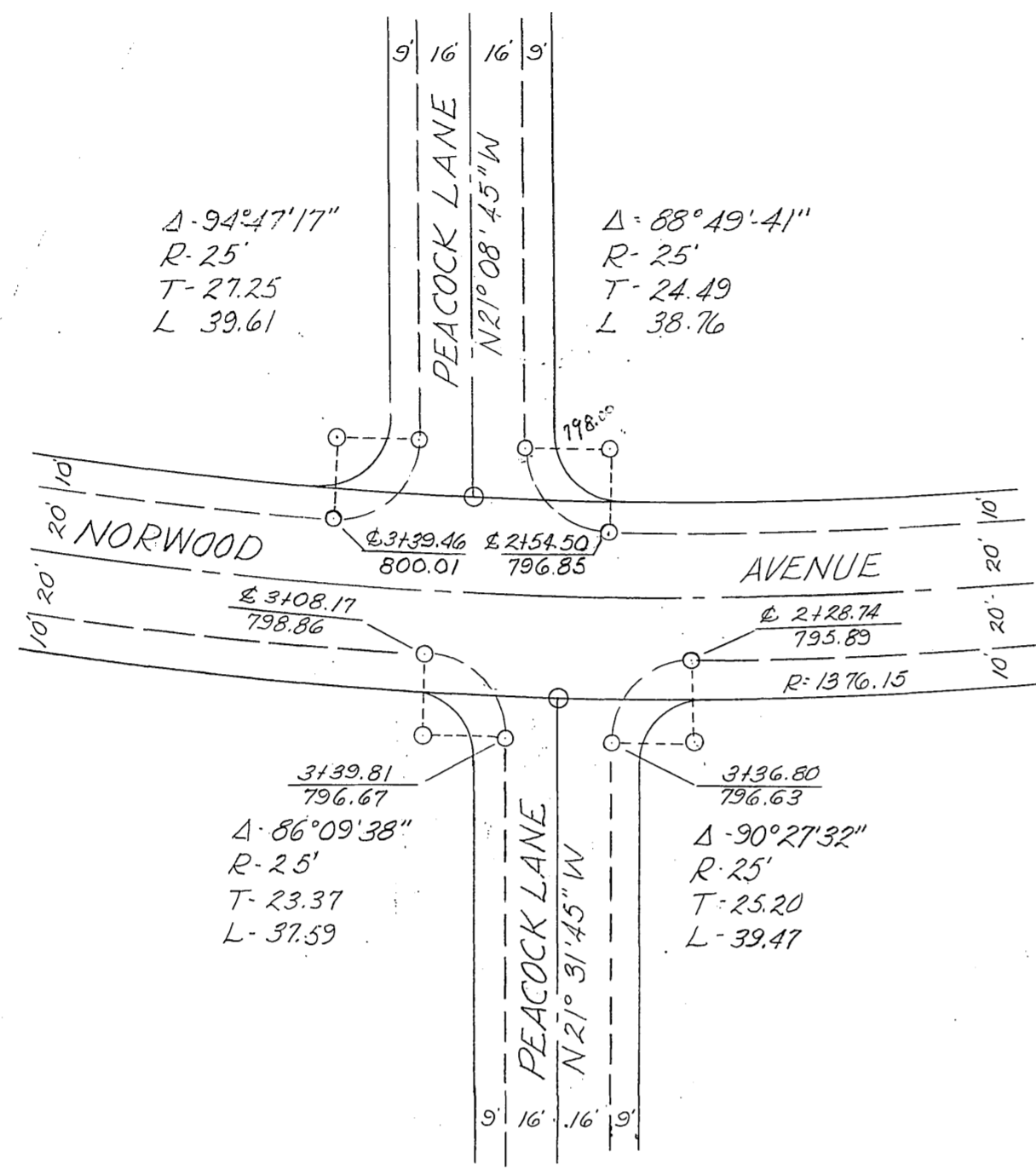
B.M. R.R. Spike in PP#256925E
 NE Corner Norwood & Sierra Vista
 Elevation 788.94



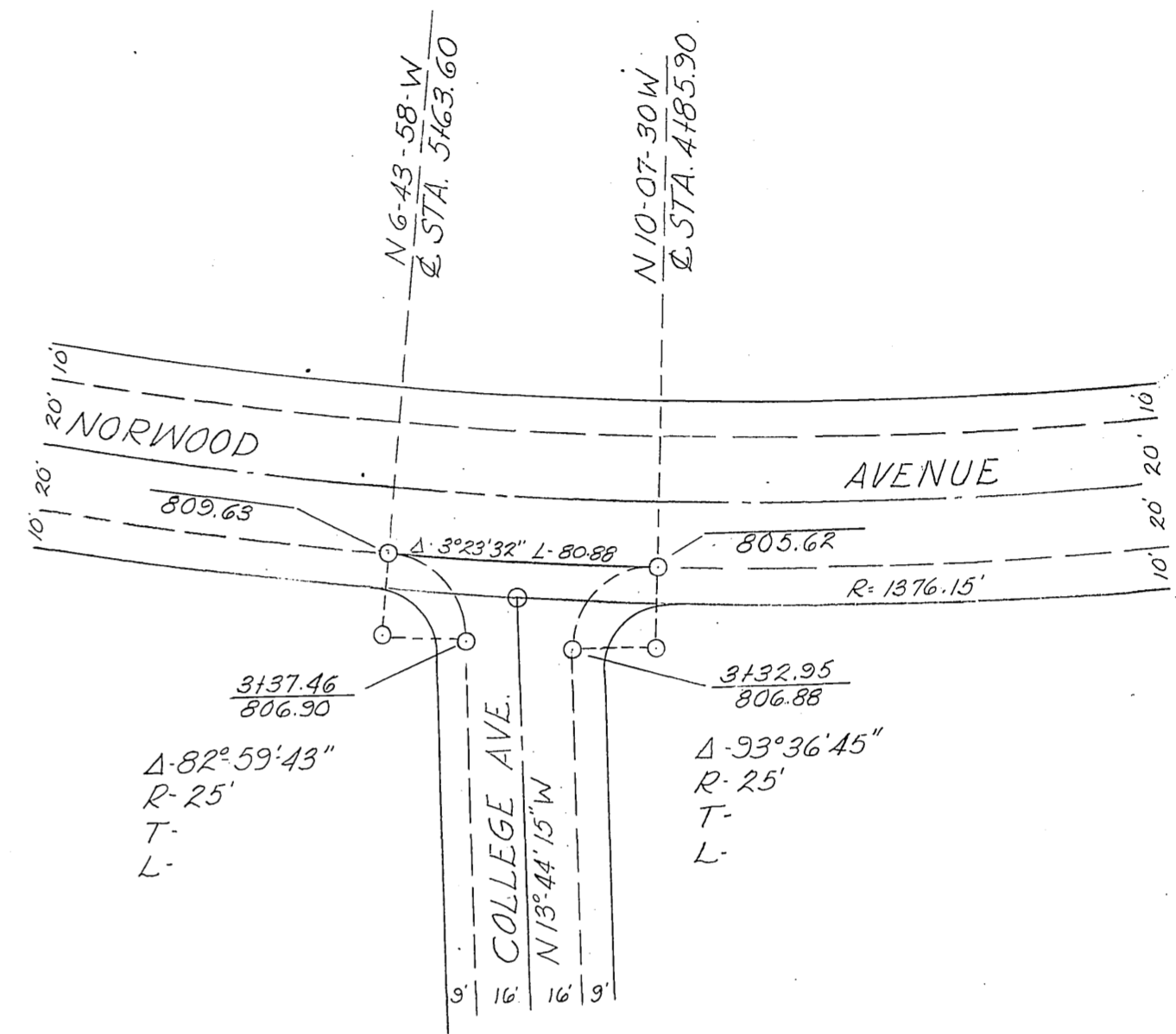
708 K

708 K

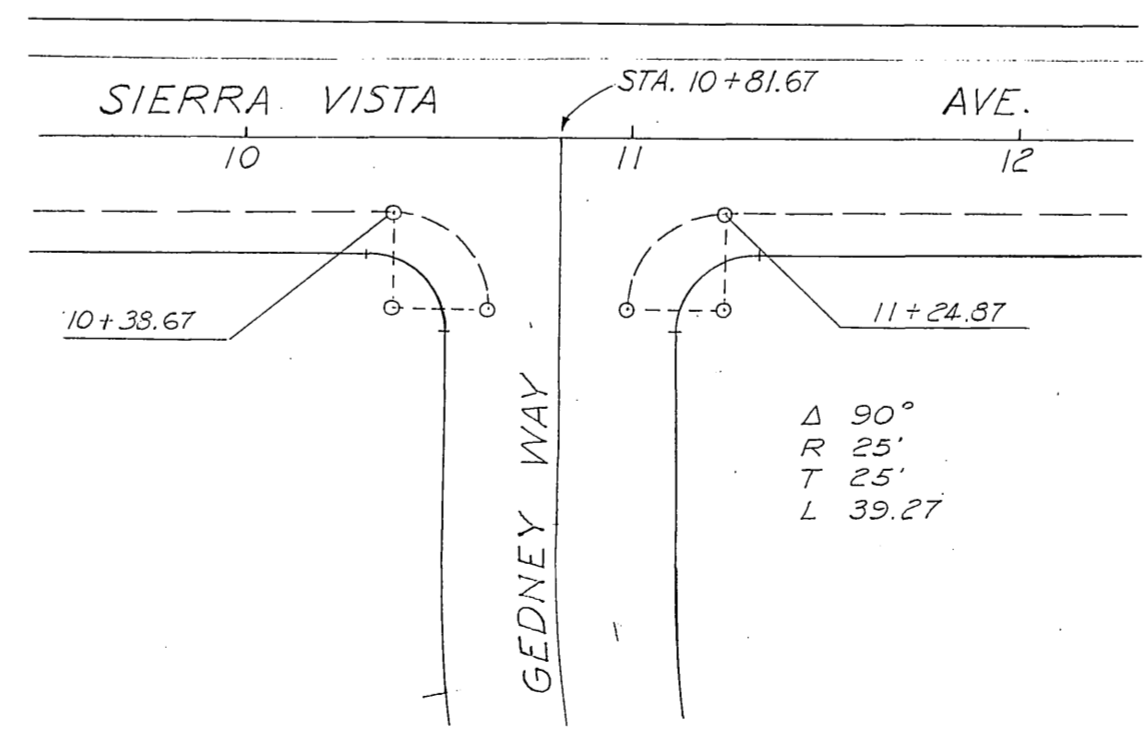
CURB GRADES VICINITY OF
SIERRA VISTA & NORWOOD



PEACOCK LANE INTERSECTION



COLLEGE AVE INTERSECTION



GEDNEY WAY INTERSECTION
STA. 10+81.67

R-999

CURB DATA
 P = 58.02-08
 R = 50'
 T = 27.73'
 L = 50.64'

0+76.41
 808.14 T.C.
 0+35.36 E.C.R.
 806.74
 5+72.37 D.C.R.
 803.14 T.C.

Curb Return Data
 Richmond-Sierra Vista Ave.
 Richmond-Peacock Lane
 $\Delta = 90^\circ$
 R = 25'
 T = 25'
 L = 39.27'

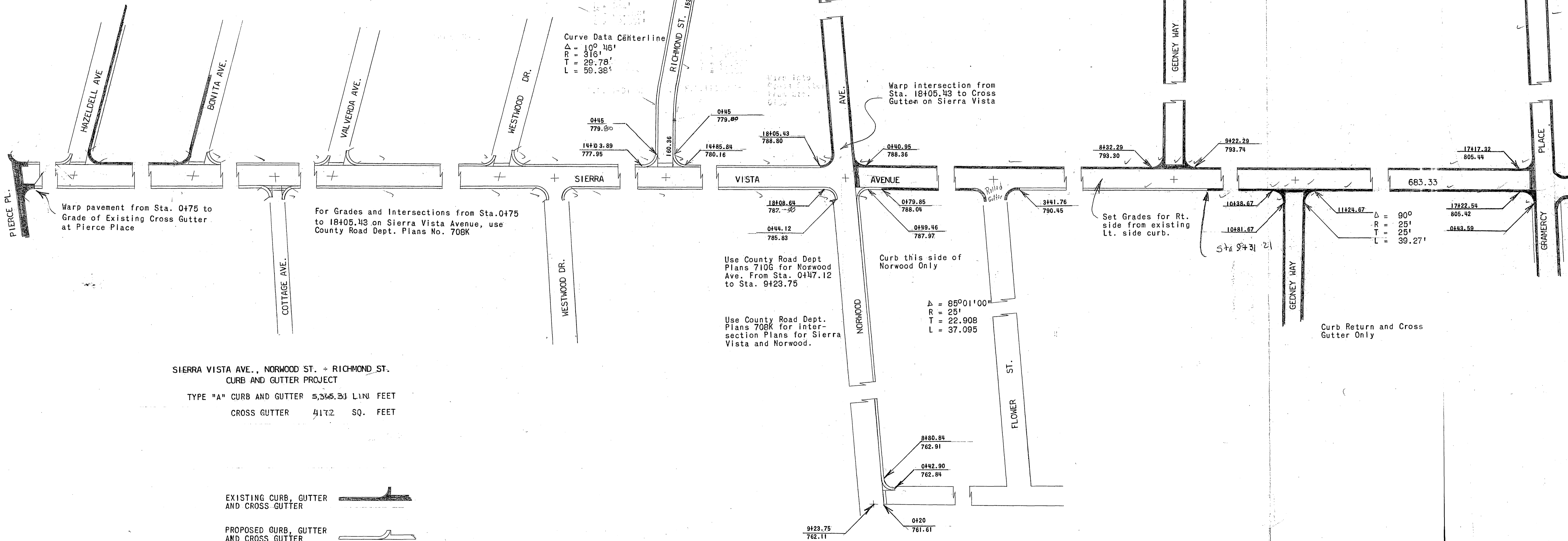
Use Standard No. 1 32' Street Section
 for Richmond St.

Warp Pavement on Richmond St. From
 Sta. 0+75 to Cross Gutter on Sierra Vista
 Avenue.

Curve Data Centerline
 $\Delta = 10^\circ 46'$
 R = 316'
 T = 29.78'
 L = 59.38'

Warp intersection from
 Sta. 18+05.43 to Cross
 Gutter on Sierra Vista

WRONG
 APPROX. → N



Warp pavement from Sta. 0+75 to
 Grade of Existing Cross Gutter
 at Pierce Place

For Grades and Intersections from Sta. 0+75
 to 18+05.43 on Sierra Vista Avenue, use
 County Road Dept. Plans No. 708K

Use County Road Dept
 Plans 710G for Norwood
 Ave. From Sta. 0+47.12
 to Sta. 9+23.75

Use County Road Dept.
 Plans 708K for inter-
 section Plans for Sierra
 Vista and Norwood.

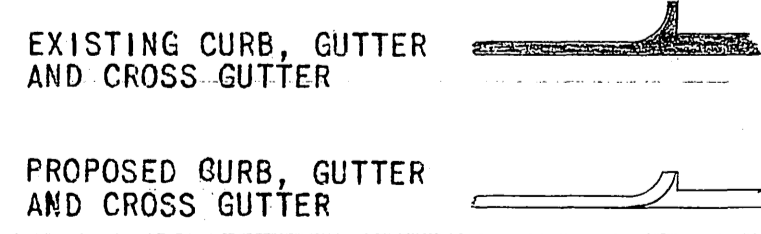
Curb this side of
 Norwood Only

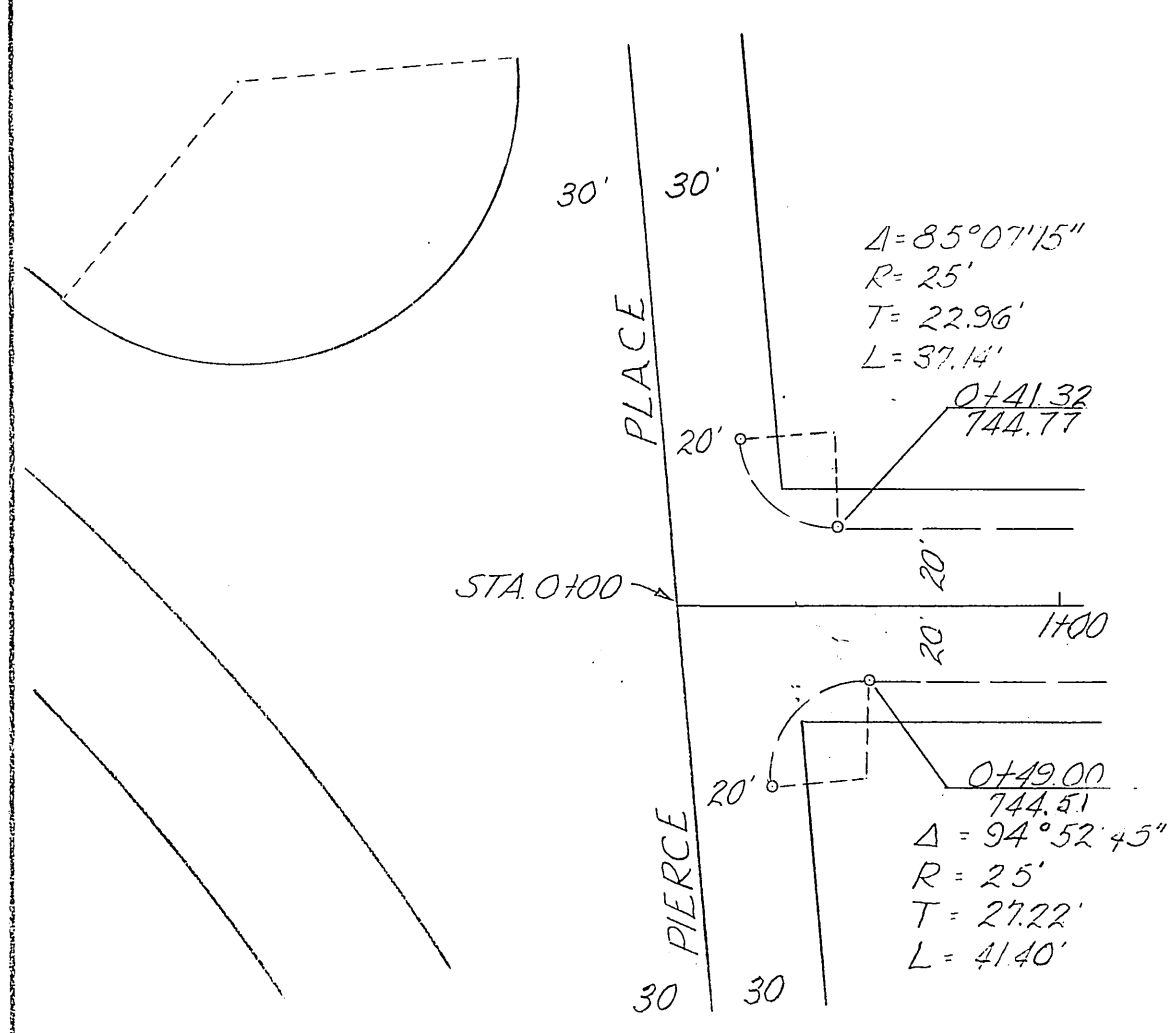
Set Grades for Rt.
 side from existing
 Lt. side curb.

Curb Return and Cross
 Gutter Only

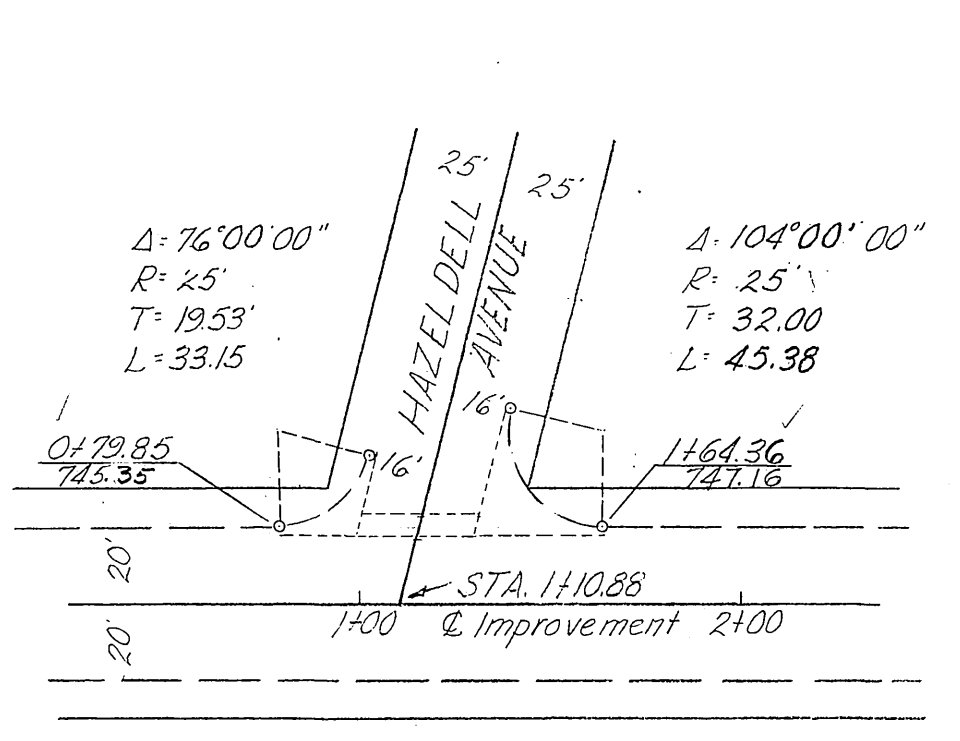
SIERRA VISTA AVE., NORWOOD ST. + RICHMOND ST.
 CURB AND GUTTER PROJECT

TYPE "A" CURB AND GUTTER 5,365.33 LIN FEET
 CROSS GUTTER 4172 SQ. FEET

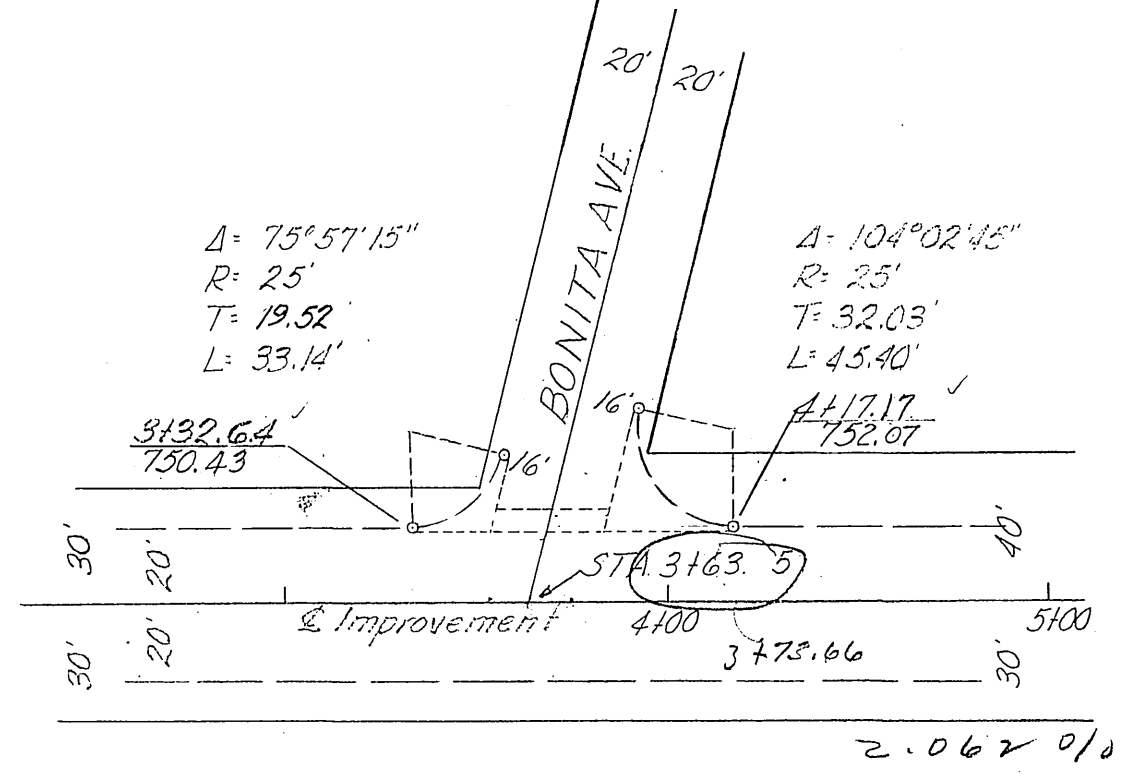




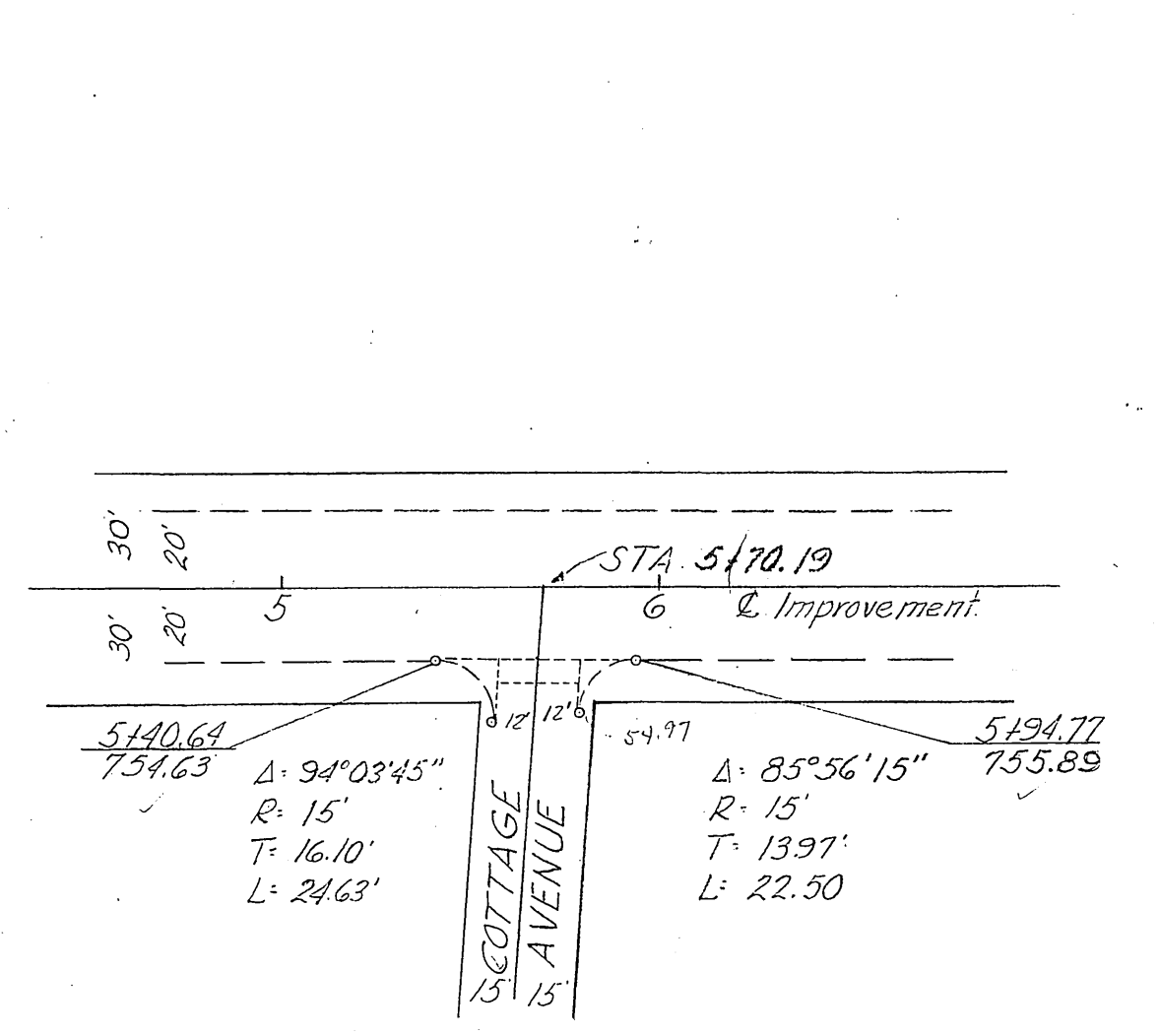
PIERCE PLACE INTERSECTION
STA. 0+100



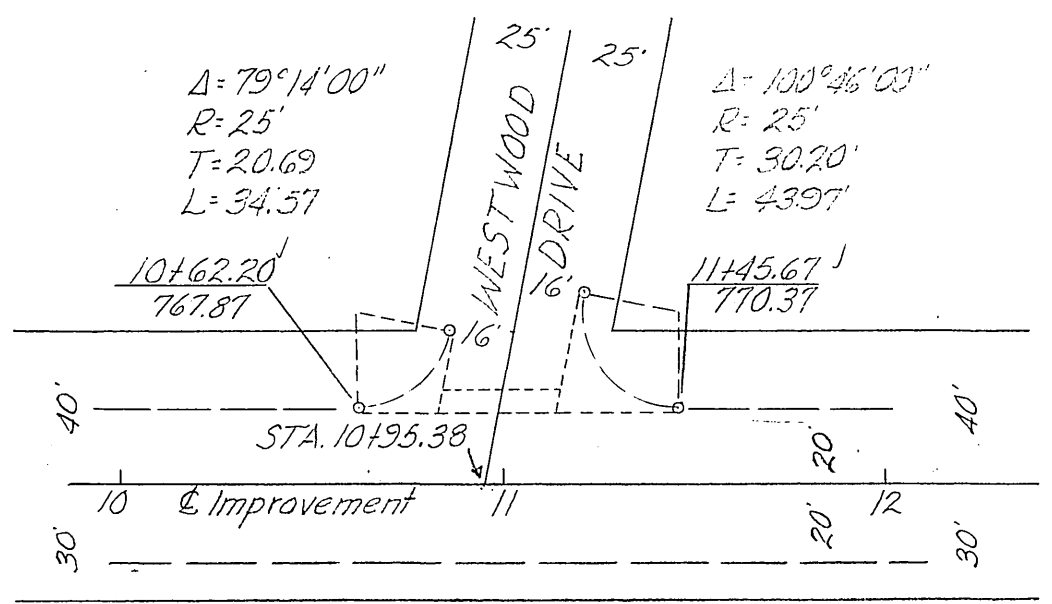
HAZELDELL AVENUE INTERSECTION
STA. 1+10.88



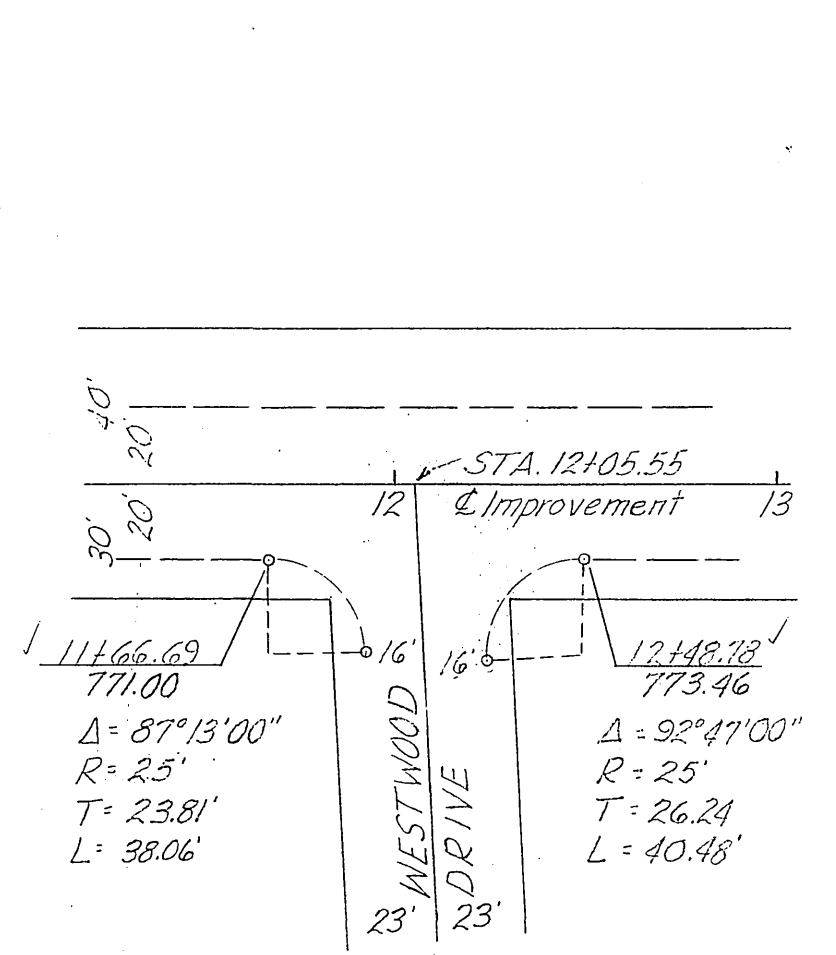
BONITA AVENUE INTERSECTION
STA. 3+163.5



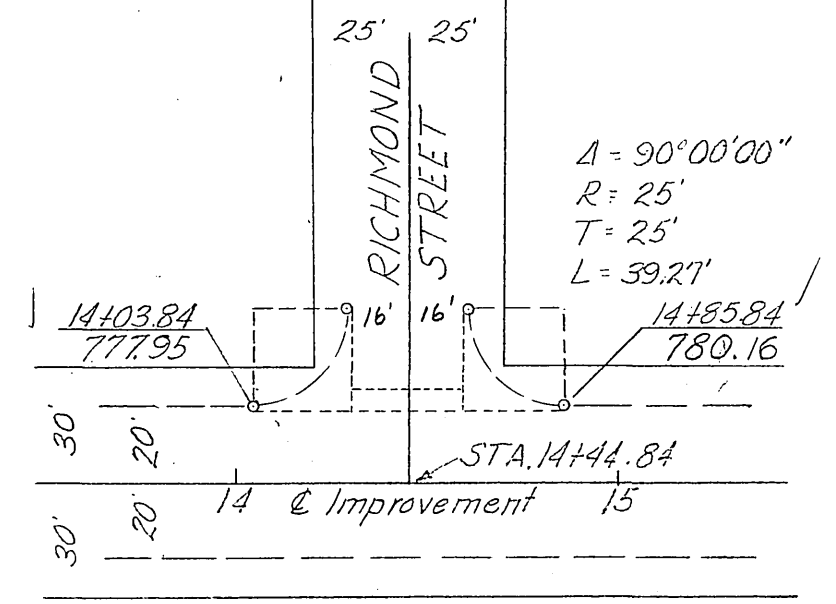
COTTAGE AVENUE INTERSECTION
STA. 5+70.19



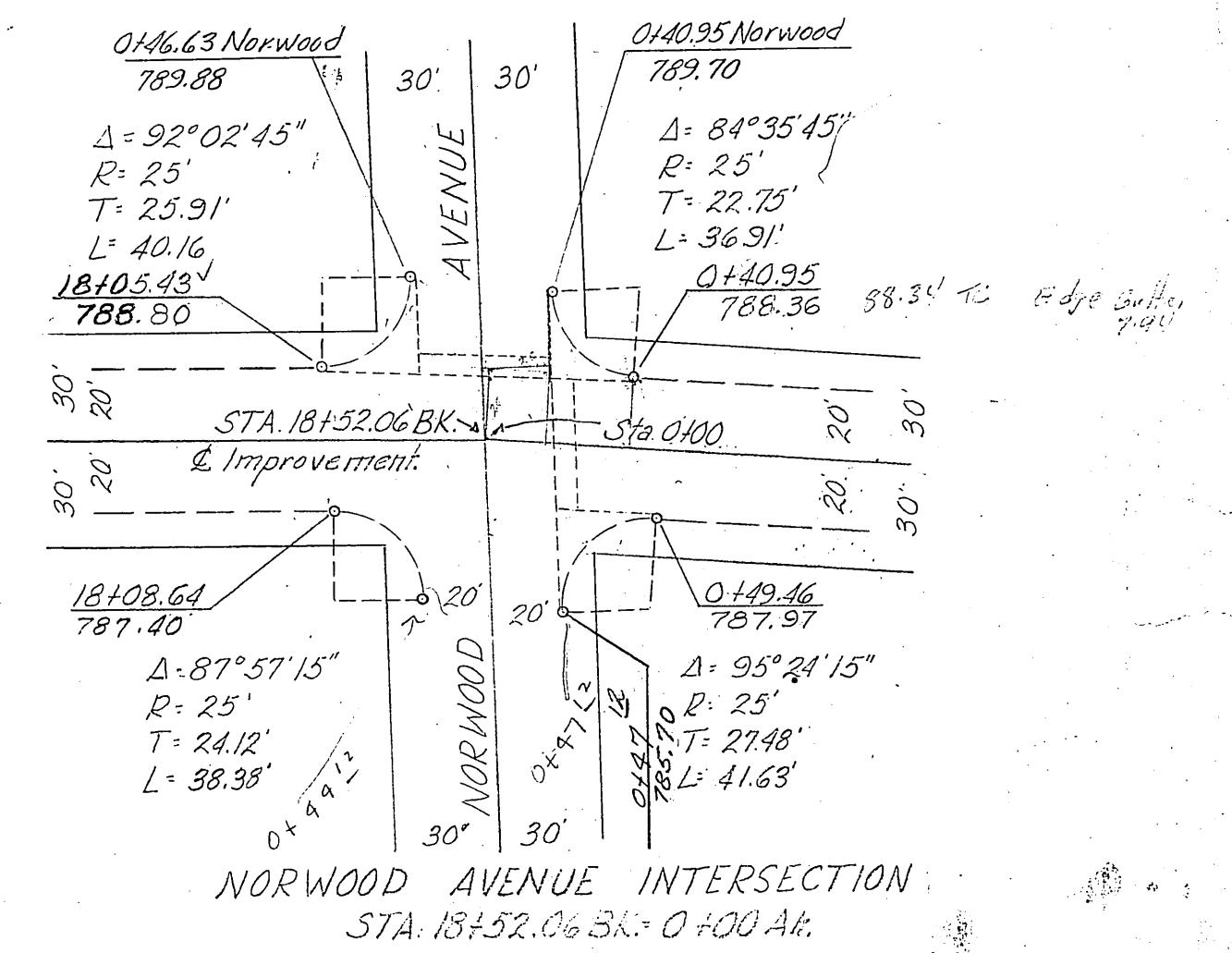
WESTWOOD DRIVE INTERSECTION
STA. 10+195.38



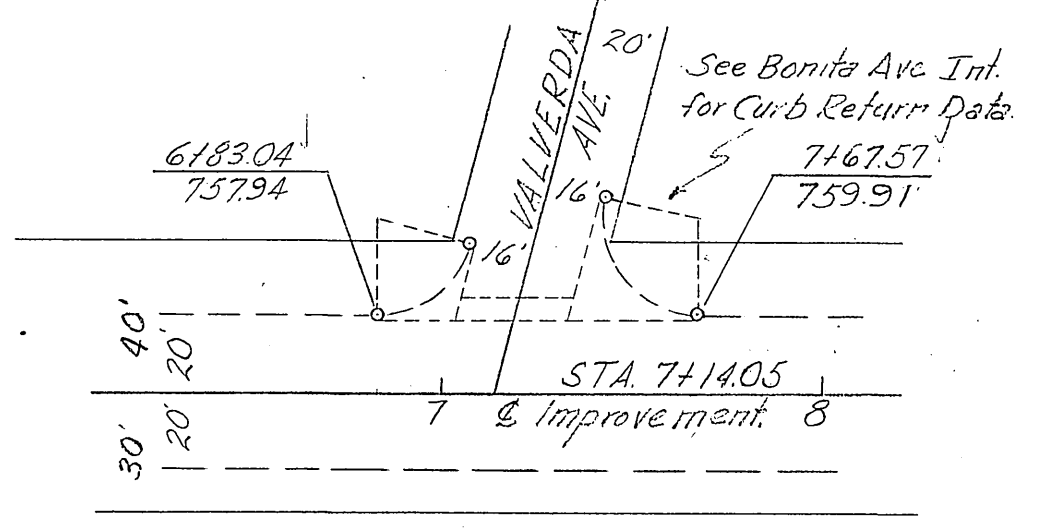
WESTWOOD DRIVE INTERSECTION
STA. 12+105.55



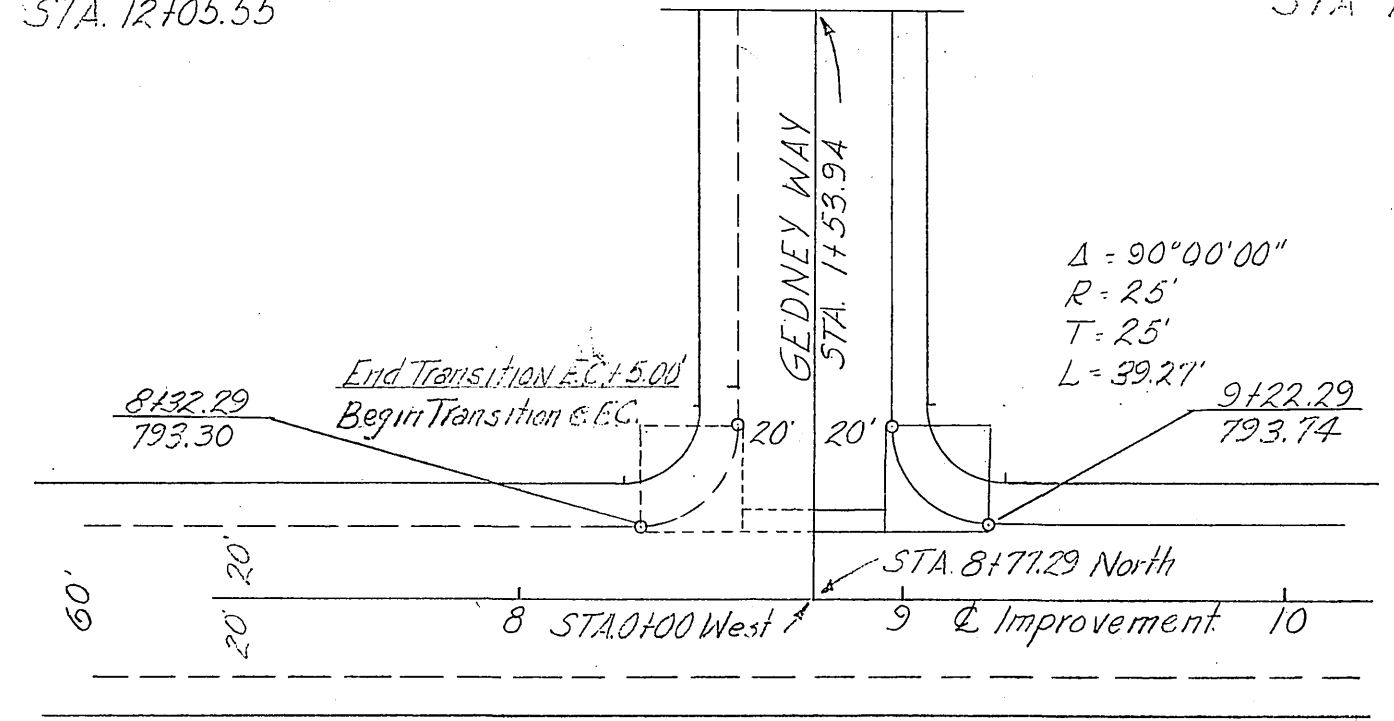
RICHMOND STREET INTERSECTION
STA. 14+44.84



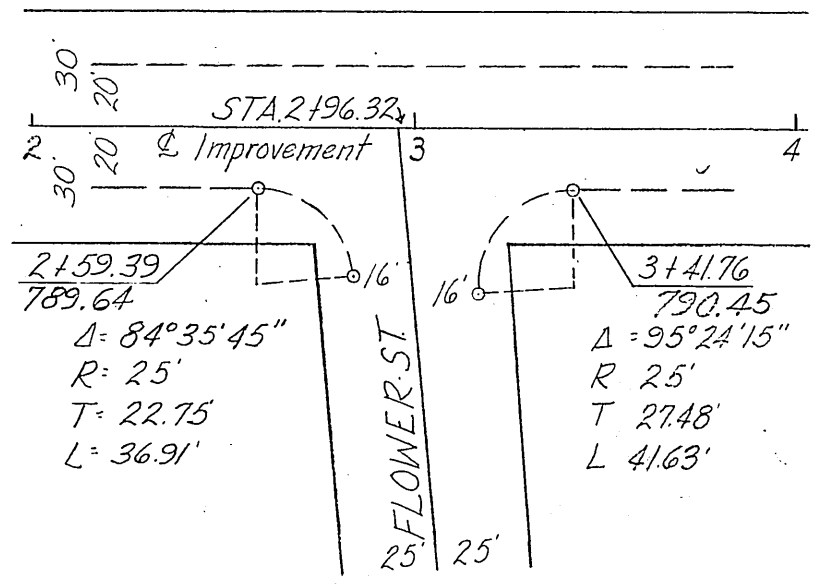
NORWOOD AVENUE INTERSECTION
STA. 18+52.06 BK. 0+00 Ak.



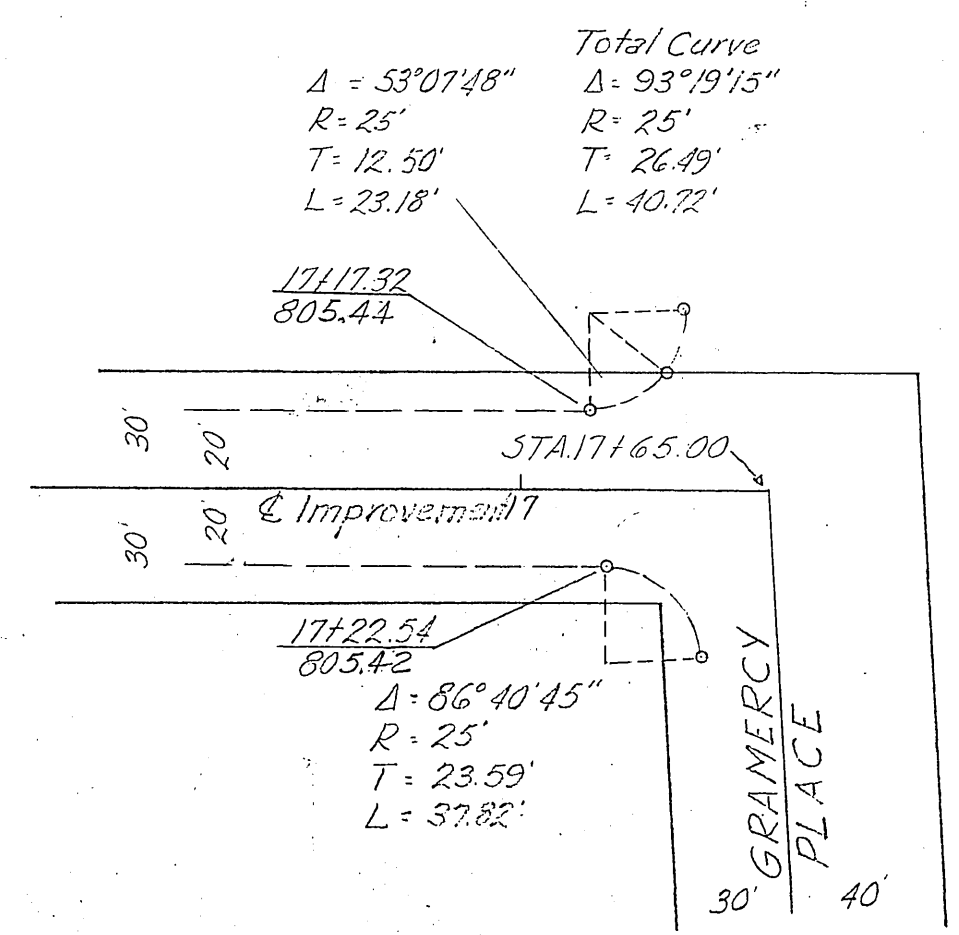
VALVERDA AVENUE INTERSECTION
STA. 7+14.05



GEDNEY WAY INTERSECTION
STA. 8+77.29



FLOWER STREET INTERSECTION
STA. 2+196.32



GRAMERCY PLACE INTERSECTION
STA. 17+65.00

REALIGNMENT ~ NORWOOD AVE.

SEPTEMBER 1954

