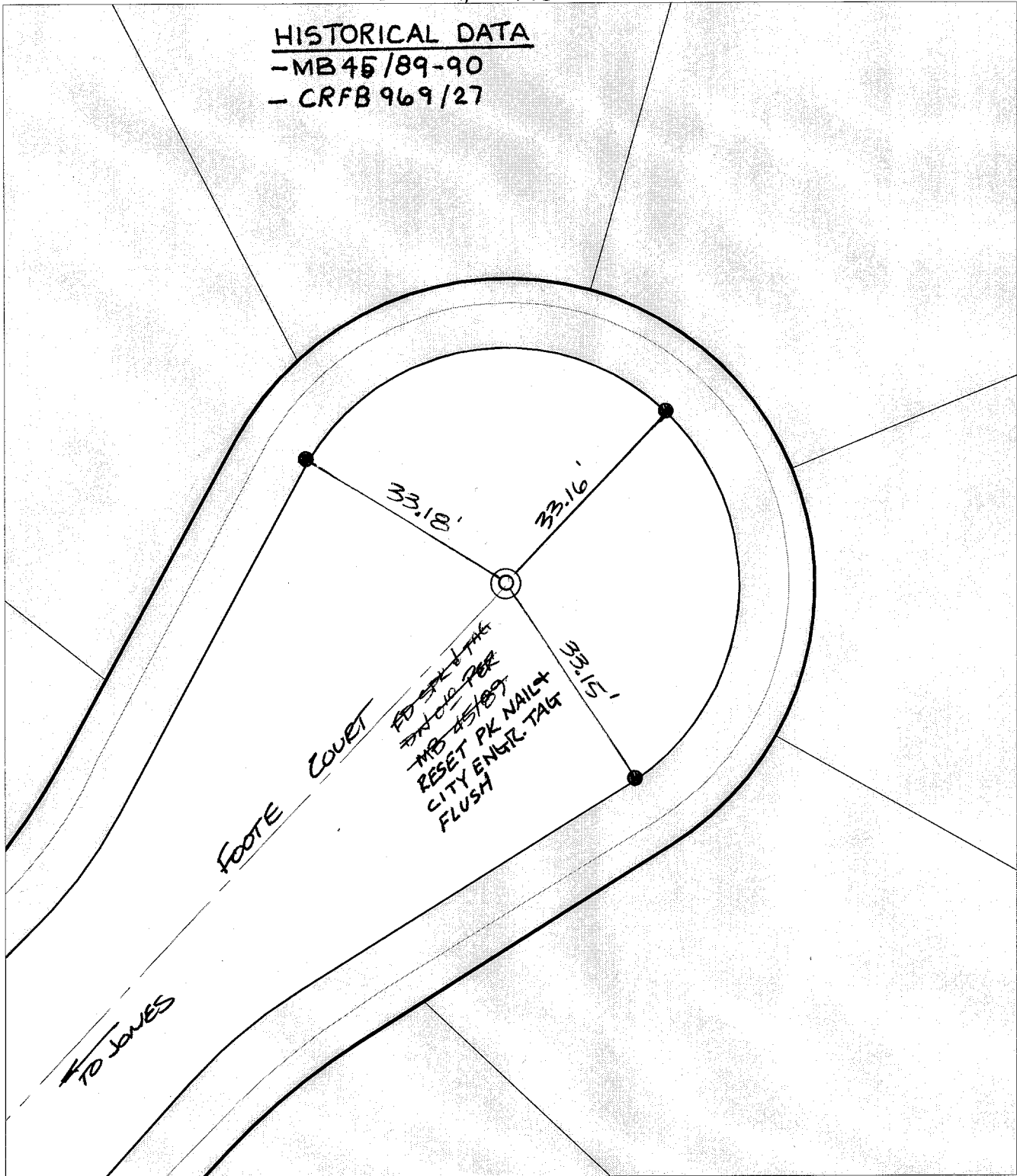


SWING TIES

HISTORICAL DATA

- MB 45/89-90  
- CRFB 969/27



Street:  
**C10008**

**TIF**  
FOOTE COURT

X-Street:  
OFFICIAL USE ONLY

CUL-DE-SAC

- × FD. Ramset Nail on T/C      ● FD. LD. & TK. on T/C
- FD. "C" Nail on T/C      ○ Set LD. & TK. on T/C

P.K. and City Engineer tag to be set @ surface after street construction is complete. (If possible)

Scale: 1" = 20'  
 Date: 11/ /01  
 Drawn by: SURVEY  
 F.B.:  
 TR-Sec: T3SR6W-14

## OFFICIAL TIE PLAT

### CITY OF RIVERSIDE

*These ties are for the purpose of perpetuating the found monumentation. No claim is made as to the relationship of the points or lines shown hereon to true boundary locations.*



Sheet 1 of 1  
 Cadme MB: 79-2