

FILE 1001

BLAINE ST

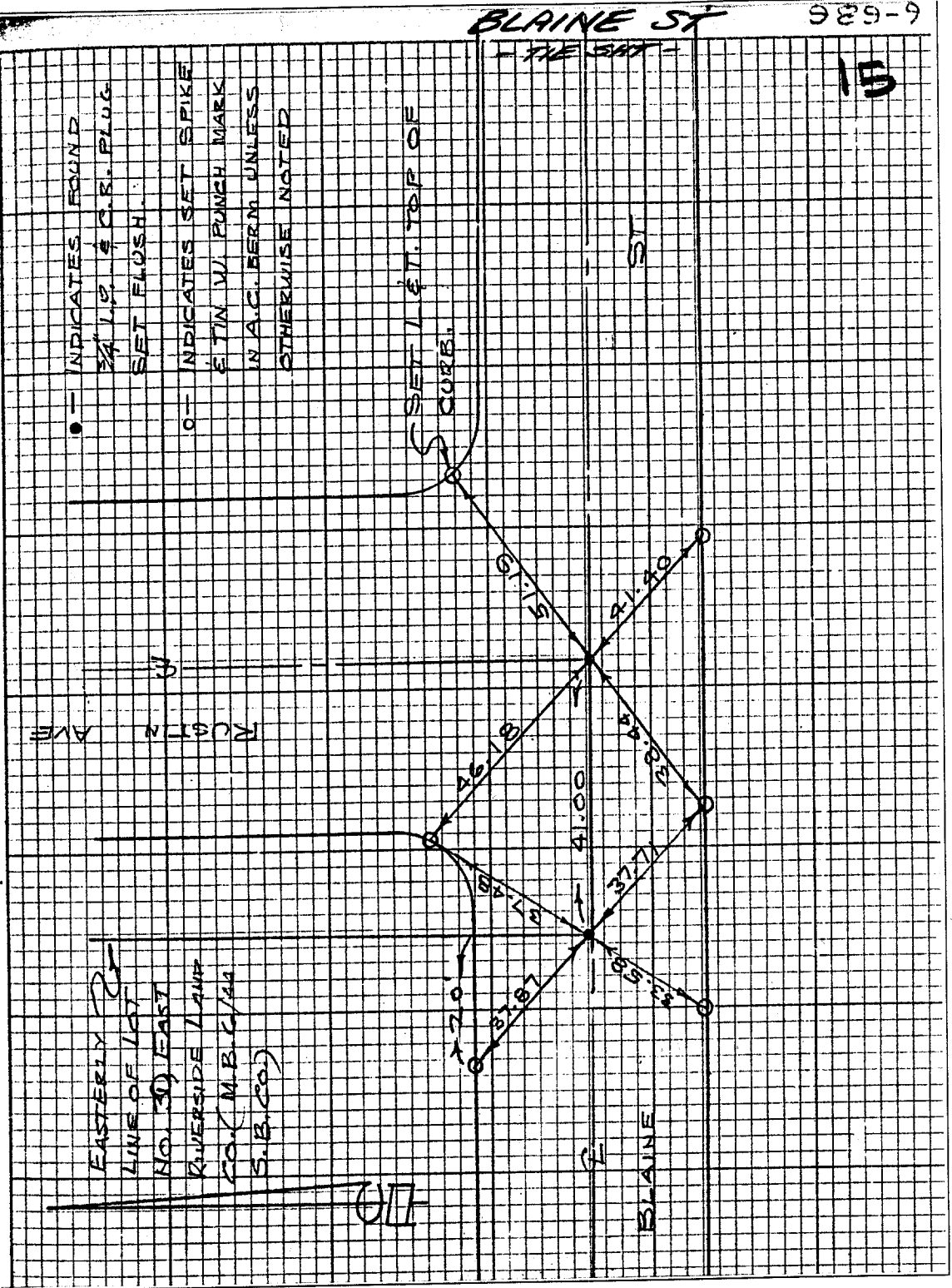
989-9

15

● - INDICATES FOUND  
 3/4" I.P. & C.R. PLUG  
 SET FLUSH.

○ - INDICATES SET SPIKE  
 & TIN W. PUNCH MARK  
 IN A.C. BERM UNLESS  
 OTHERWISE NOTED

SET 1' & 7" TOP OF CURB.



- × FD. Ramset Nail on T/C
- FD. LD. & TK. on T/C
- FD. "C" Nail on T/C
- Set LD. & TK. on T/C

Scale:  
 Date:  
 Drawn by:  
 W.O.:  
 F.B.:

## OFFICIAL TIE PLAT

### CITY OF RIVERSIDE

*These ties are for the purpose of perpetuating the found monumentation. No claim is made as to the relationship of the points or lines shown hereon to true boundary locations.*

Sheet 1 of 1  
 File No.:

Street: BLAINE ST.  
 X-Street: RUSTIN AVE  
 OFFICIAL USE ONLY