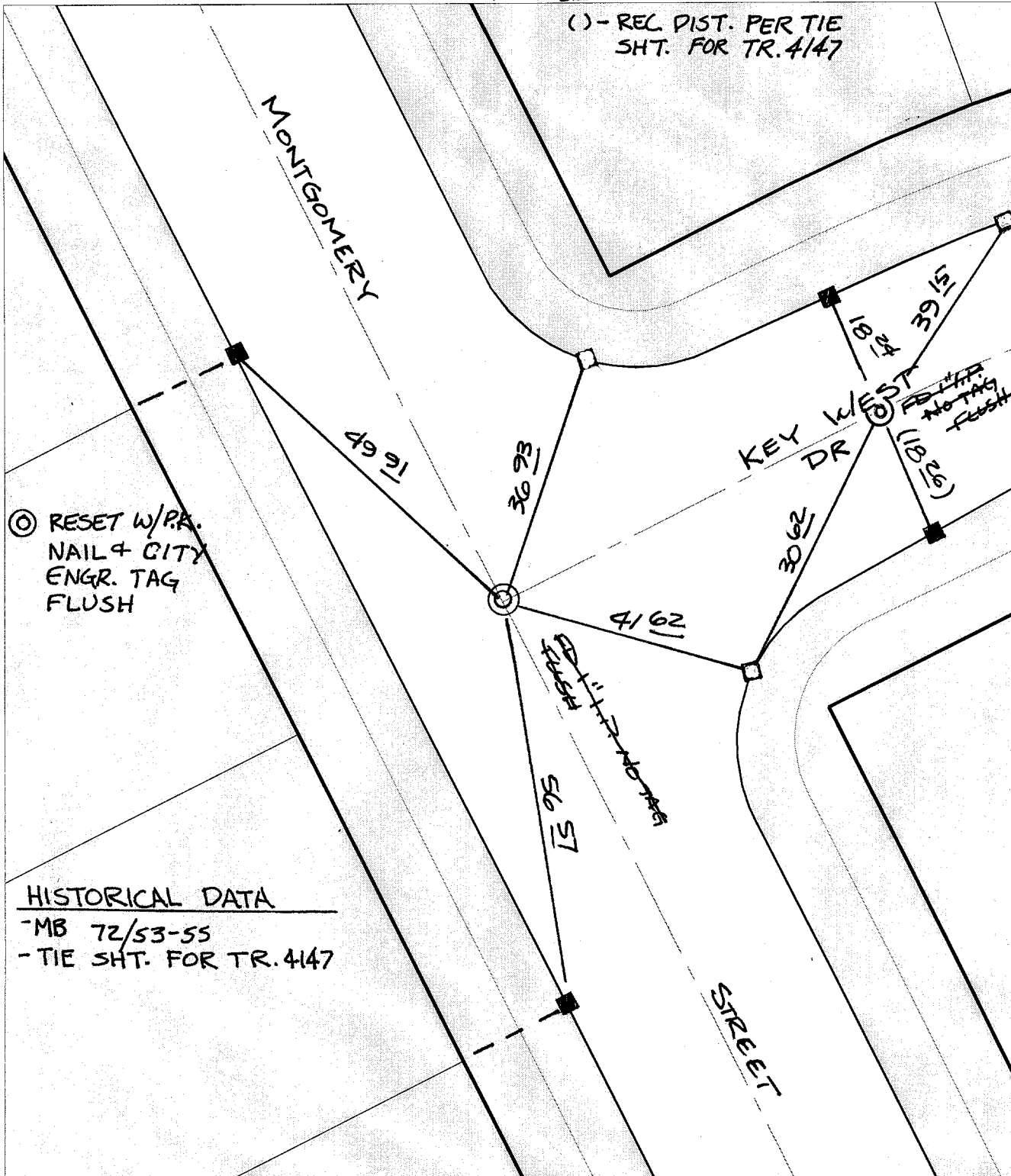


SWING TIES

() - REC. DIST. PER TIE SHT. FOR TR. 4147



⊙ RESET W/P.R. NAIL + CITY ENGR. TAG FLUSH

HISTORICAL DATA

- MB 72/53-55
- TIE SHT. FOR TR. 4147

- ✕ FD. Ramset Nail on T/C
- FD. LD. & TK. on T/C
- FD. "C" Nail on T/C
- Set LD. & TK. on T/C

P.K. and City Engineer tag to be set @ surface after street construction is complete. (If possible)

Scale: 1" = 20'

Date: 10/22/01

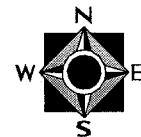
Drawn by: survey

F.B.:

TR-Sec: T3SR6W-1

OFFICIAL TIE PLAT
CITY OF RIVERSIDE

These ties are for the purpose of perpetuating the found monumentation. No claim is made as to the relationship of the points or lines shown hereon to true boundary locations.



Sheet 1 of 1
Cadme MB: 65-2

Street:
C10023

TIF
MONTGOMERY ST

X-Street:
OFFICIAL USE ONLY

KEY WEST DR