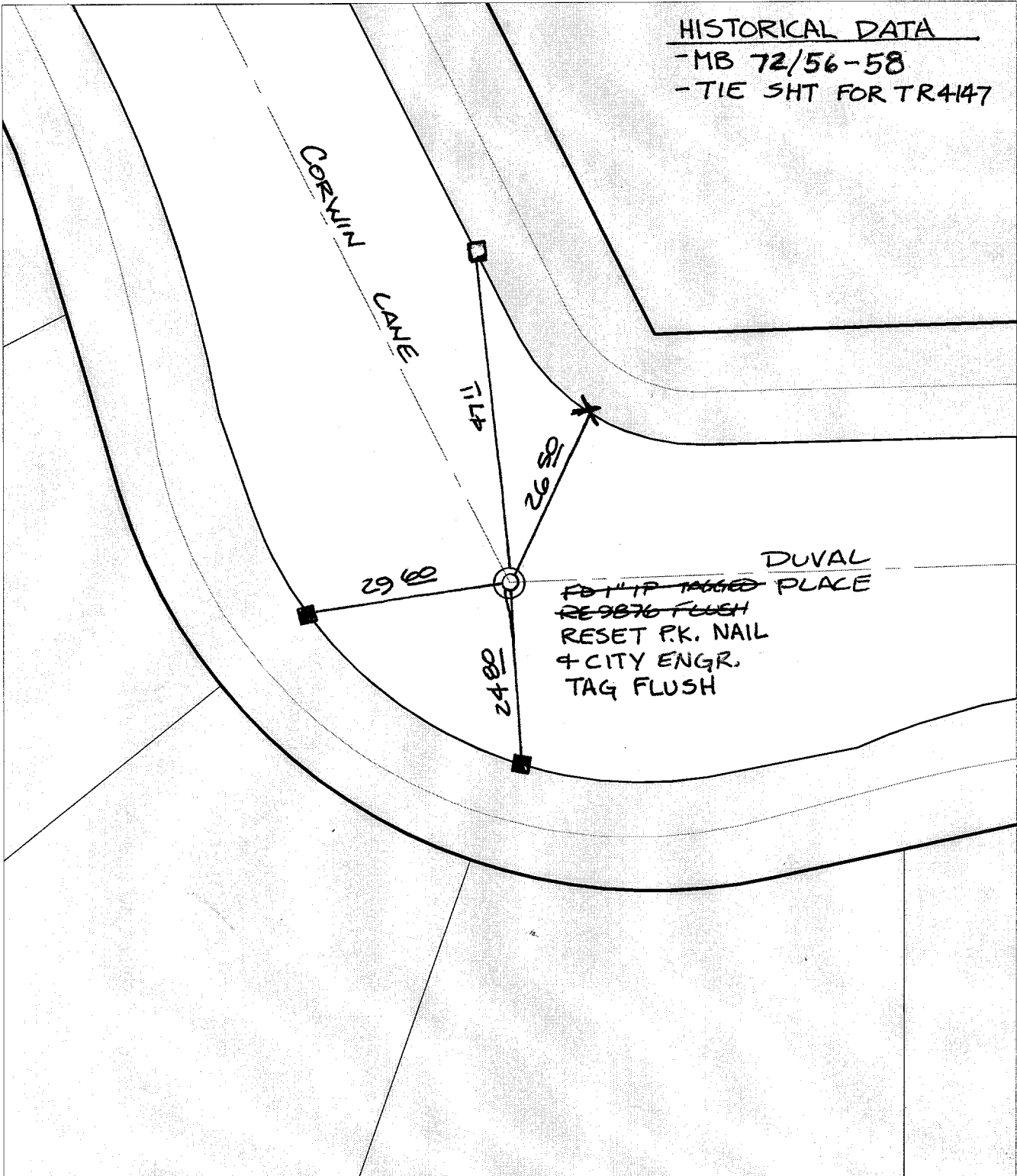


SWING TIES

HISTORICAL DATA  
 - MB 72/56-58  
 - TIE SHT FOR TR4147



Street: C10026 CORWIN LANE  
 TIF  
 X-Street: DUVAL PLACE  
 OFFICIAL USE ONLY

- ✕ FD. Ramset Nail on T/C    ● FD. LD. & TK. on T/C
- FD. "C" Nail on T/C      ○ Set LD. & TK. on T/C

P.K. and City Engineer tag to be set @ surface after street construction is complete. (If possible)

Scale: 1" = 20'  
 Date: 10/22/01  
 Drawn by: survey  
 F.B.:  
 TR-Sec: T3SR6W-1

## OFFICIAL TIE PLAT

### CITY OF RIVERSIDE

*These ties are for the purpose of perpetuating the found monumentation. No claim is made as to the relationship of the points or lines shown hereon to true boundary locations.*



Sheet 1 of 1  
 Cadme MB: 65-2