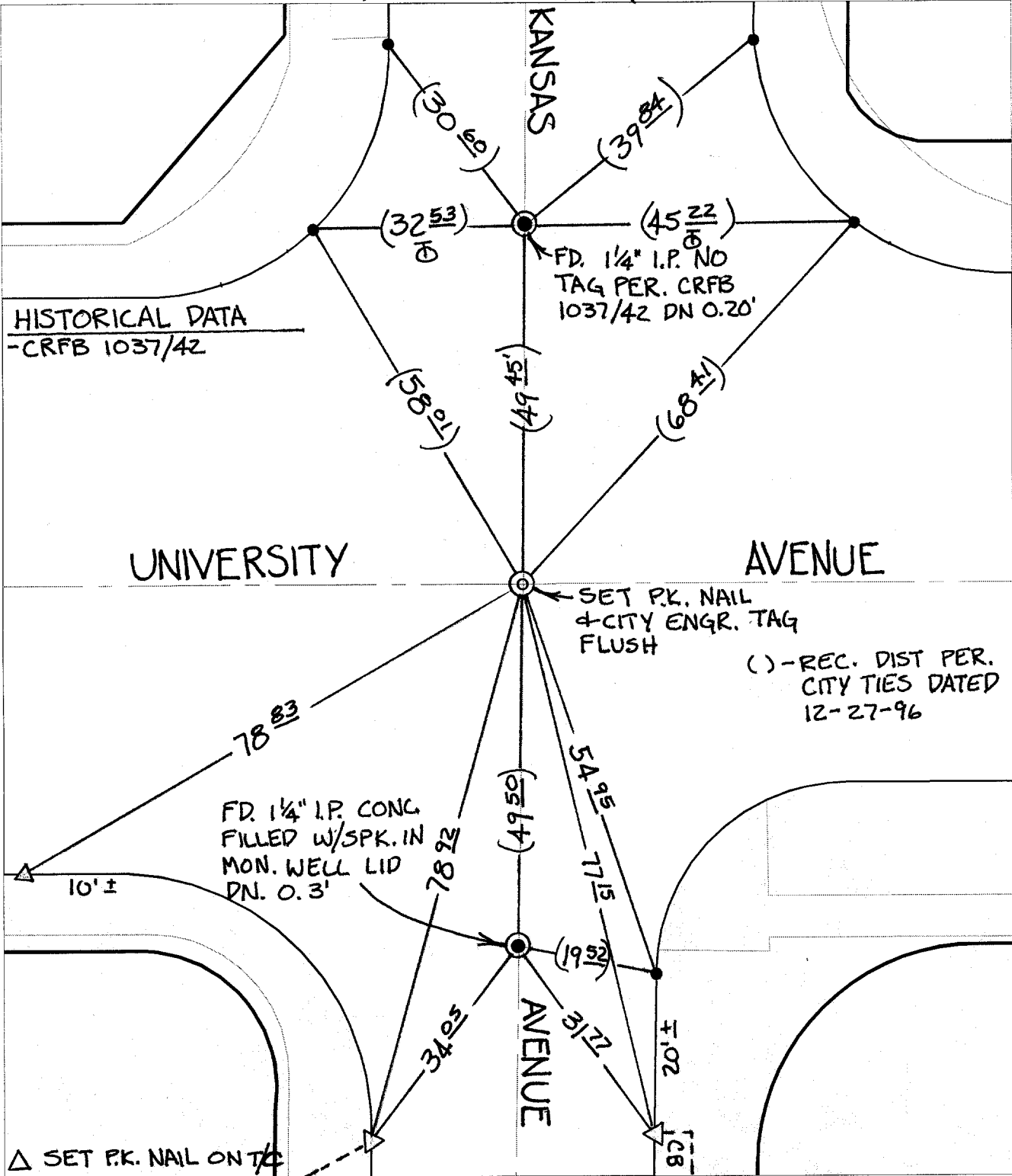


TRANSIT & SWING TIES



HISTORICAL DATA  
-CRFB 1037/42

FD. 1/4" I.P. NO TAG PER. CRFB 1037/42 DN 0.20'

SET P.K. NAIL & CITY ENGR. TAG FLUSH

( ) - REC. DIST PER. CITY TIES DATED 12-27-96

FD. 1/4" I.P. CONG FILLED W/SPK. IN MON. WELL LID DN. 0.3'

10' ±

△ SET P.K. NAIL ON T/C

× FD. Ramset Nail on T/C  
■ FD. "C" Nail on T/C

● FD. LD. & TK. on T/C  
○ Set LD. & TK. on T/C

P.K. and City Engineer tag to be set @ surface after street construction is complete. (If possible)

Street: C10032

TIF UNIVERSITY AVENUE

X-Street: OFFICIAL USE ONLY

KANSAS AVENUE

Scale: 1" = 20'

Date: 02/20/02

Drawn by: SURVEY

F.B.:

TR-Sec: T2SR5W-25

OFFICIAL TIE PLAT  
CITY OF RIVERSIDE

These ties are for the purpose of perpetuating the found monumentation. No claim is made as to the relationship of the points or lines shown hereon to true boundary locations.



Sheet 1 of 1

Cadme MB: 40-2