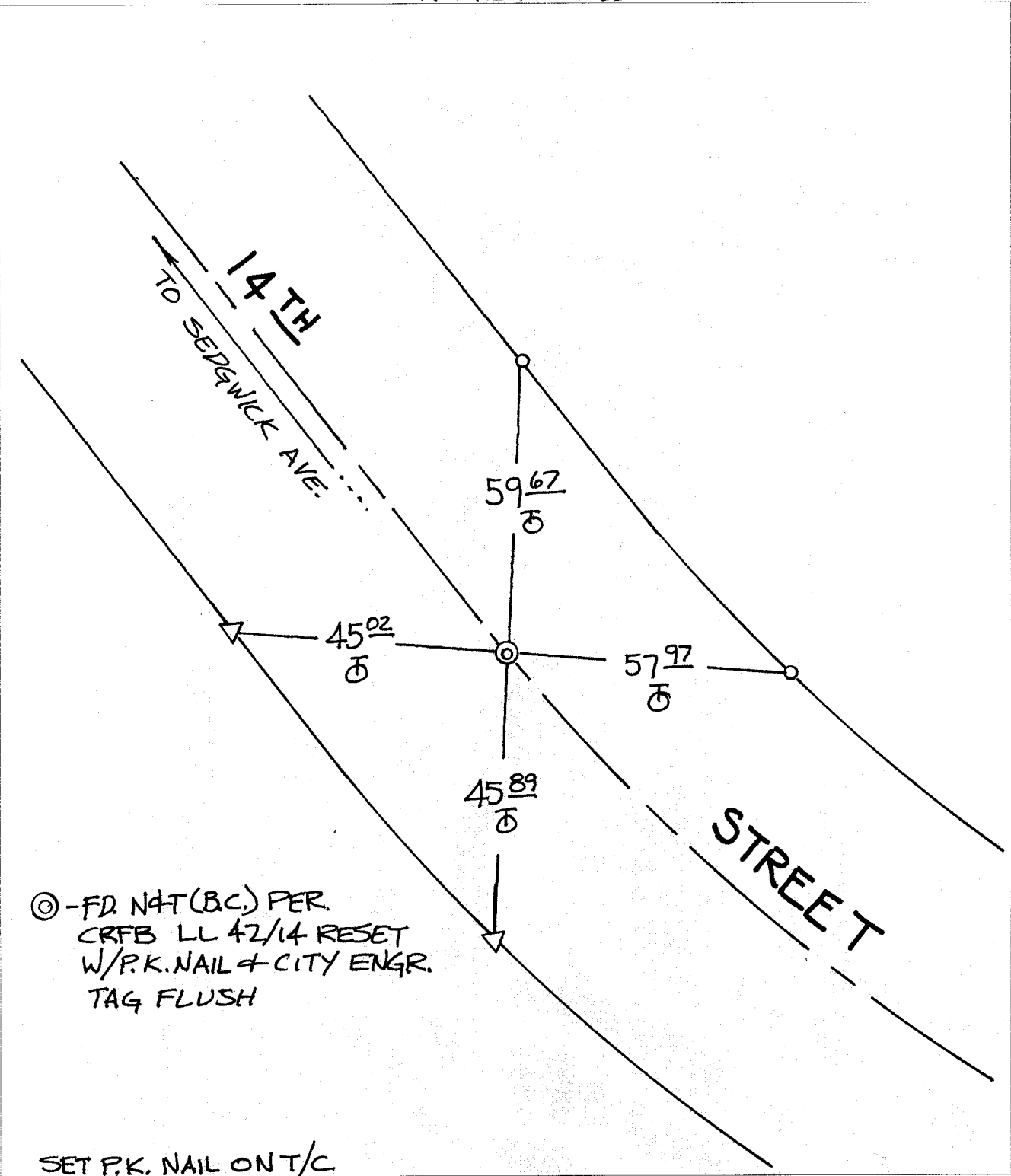


TRANSIT TIES

Street: **FOURTEENTH STREET**
C10036 TIF
 X-Street: **E'LY OF SEDGWICK AVE.**
 OFFICIAL USE ONLY



⊙ - FD. NAT (B.C.) PER
 CRFB LL 42/14 RESET
 W/P.K. NAIL & CITY ENGR.
 TAG FLUSH

SET P.K. NAIL ON T/C

- ✕ FD. Ramset Nail on T/C
 - FD. LD. & TK. on T/C
 - FD. "C" Nail on T/C
 - Set LD. & TK. on T/C
- P.K. and City Engineer tag to be set @ surface after street construction is complete. (If possible)

Scale: 1" = 20'
 Date: 02/19/02
 Drawn by: SURVEY
 F.B.:
 TR-Sec: T2SR5W-25

OFFICIAL TIE PLAT
 CITY OF RIVERSIDE

These ties are for the purpose of perpetuating the found monumentation. No claim is made as to the relationship of the points or lines shown hereon to true boundary locations.



Sheet 1 of 1
 Cadme MB: 40-6