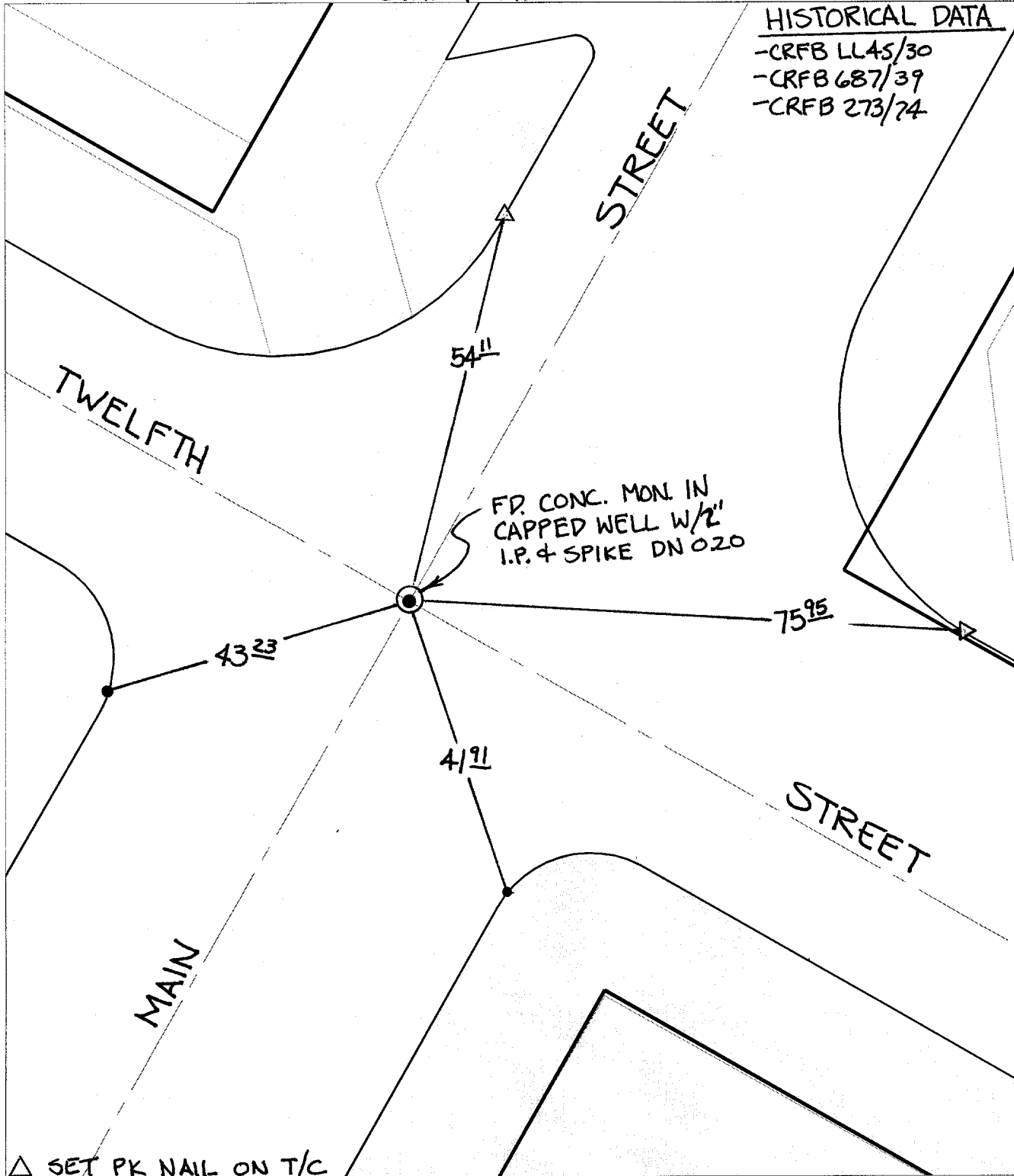


SWING TIES

HISTORICAL DATA

- CRFB LL45/30
- CRFB 687/39
- CRFB 273/74



Street: C10040

TIE 12TH

X-Street: OFFICIAL USE ONLY

MAIN

△ SET PK NAIL ON T/C

- × FD. Ramset Nail on T/C
- FD. LD. & TK. on T/C
- FD. "C" Nail on T/C
- Set LD. & TK. on T/C

P.K. and City Engineer tag to be set @ surface after street construction is complete. (If possible)

Scale: 1" = 20'

Date: 02/19/02

Drawn by: survey

F.B.:

TR-Sec: -

OFFICIAL TIE PLAT

CITY OF RIVERSIDE

These ties are for the purpose of perpetuating the found monumentation. No claim is made as to the relationship of the points or lines shown hereon to true boundary locations.



Sheet 1 of 1

Cadme MB: 39-2