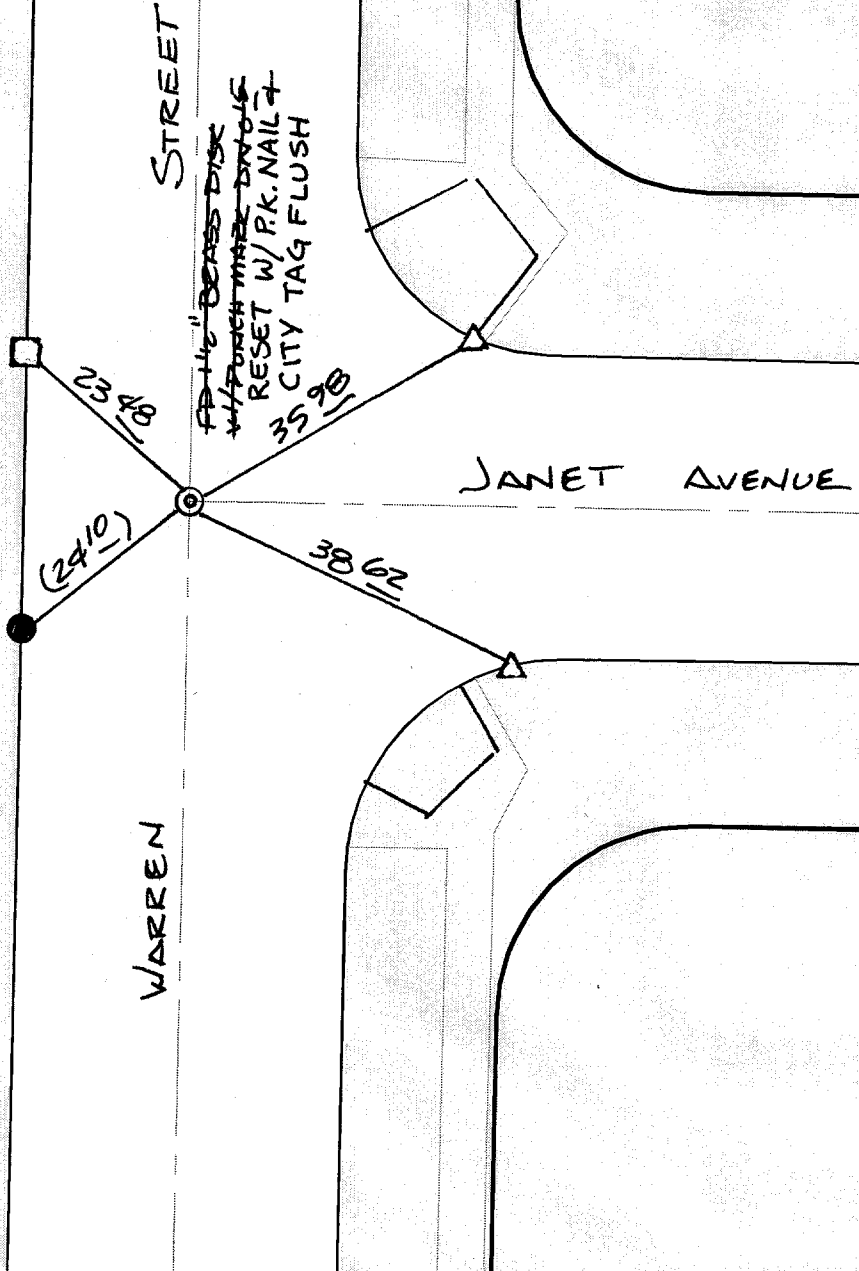


HISTORICAL DATA
 -CRFB 645/46
 -CITY TIE SHT DATED
 10/30/98

SWING TIES

L1- REC. DIST. PER.
 CRFB 645/46



Street:
 C10041

TIF
 WARREN ST

X-Street:
 OFFICIAL USE ONLY

JANET AVE

- × FD. Ramset Nail on T/C ● FD. LD. & TK. on T/C
- FD. "C" Nail on T/C ○ Set LD. & TK. on T/C

P.K. and City Engineer tag to be set @
 surface after street construction is
 complete. (If possible)

Scale: 1" = 20'
 Date: 10/22/01
 Drawn by: survey
 F.B.:
 TR-Sec: T3SR6W-1

OFFICIAL TIE PLAT

CITY OF RIVERSIDE

*These ties are for the purpose of perpetuating the found
 monumentation. No claim is made as to the relationship of
 the points or lines shown hereon to true boundary locations.*



Sheet 1 of 1
 Cadme MB: 50-5