

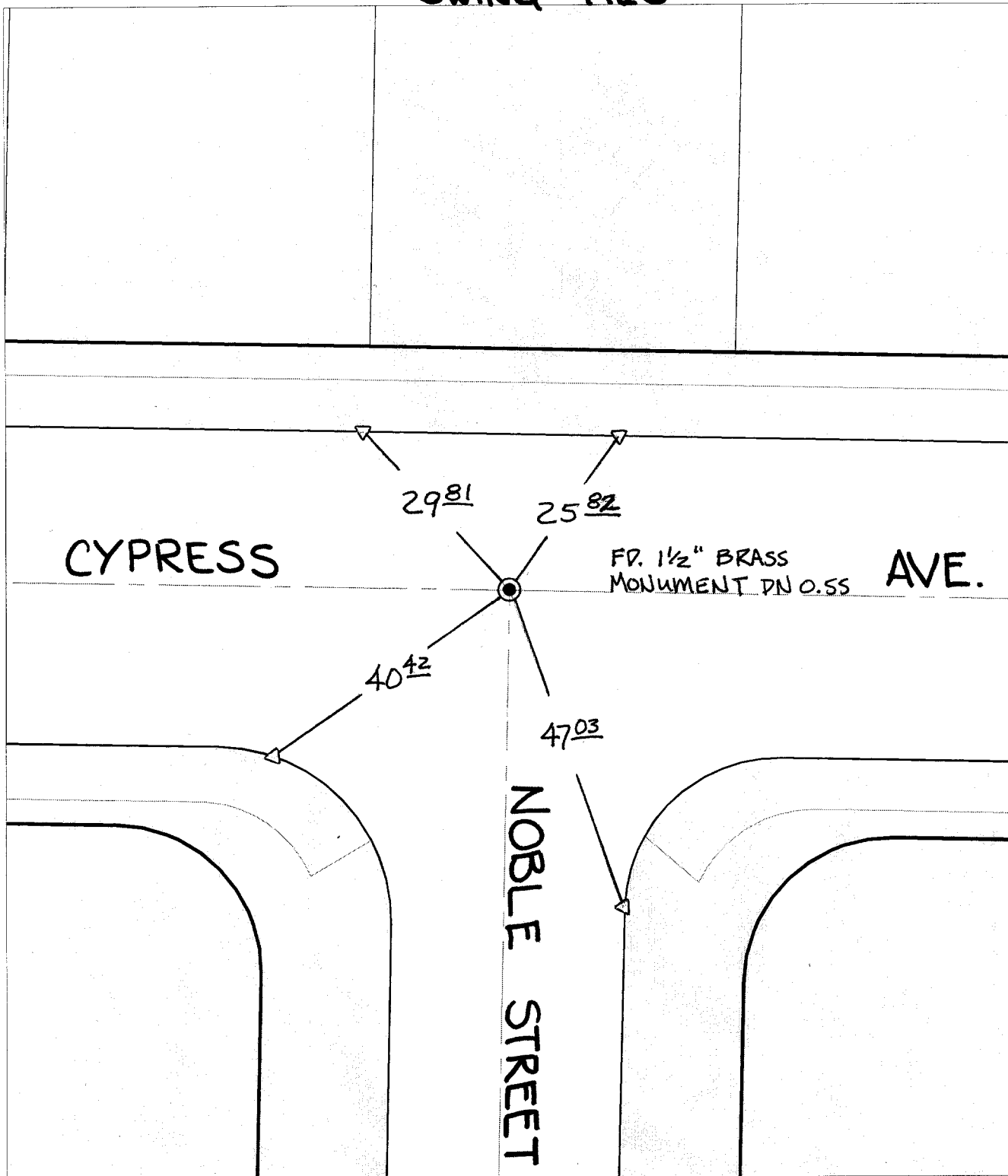
SWING TIES

Street:  
C 10042

TIF  
CYPRESS AVENUE

OFFICIAL USE ONLY  
X-Street:

NOBLE STREET



- ✕ FD. Ramset Nail on T/C    ● FD. LD. & TK. on T/C
- FD. "C" Nail on T/C      ○ Set LD. & TK. on T/C

P.K. and City Engineer tag to be set @ surface after street construction is complete. (If possible)

Scale: 1" = 20'

Date: 04/13/01

Drawn by: SURVEY

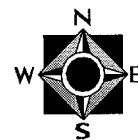
F.B.:

TR-Sec: T3SR6W-1

## OFFICIAL TIE PLAT

### CITY OF RIVERSIDE

*These ties are for the purpose of perpetuating the found monumentation. No claim is made as to the relationship of the points or lines shown hereon to true boundary locations.*



Sheet 1 of 1

Cadme MB: 49-6