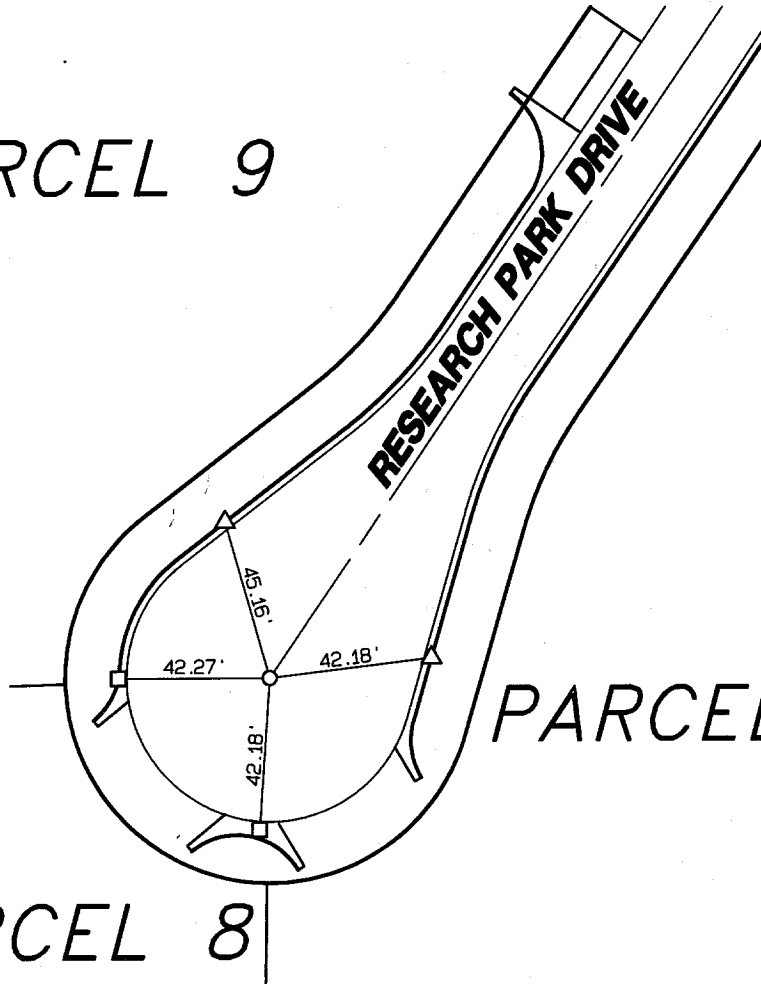


PARCEL MAP NO. 29161

STREET RESEARCH PARK DRIVE
10059 TIF
X-STREET CUL-DE-SAC
OFFICE USE ONLY

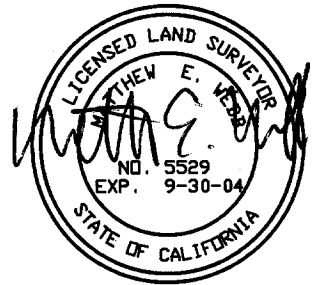
PARCEL 9



PARCEL 7

PARCEL 8

- INDICATES BOAT SPIKE & WASHER TAGGED L.S. 5529
- INDICATES "RAM-SET" NAIL & TAG TAGGED L.S. 5529
- △ INDICATES "RAM-SET" NAIL



G:\1998\98-0417\TIES.pro

SCALE: N.T.S.	OFFICIAL TIE PLAT CITY OF RIVERSIDE	SHEET
DATE: 8-6-2001		1
DR. BY: MLA	PREPARED BY: ALBERT A. WEBB ASSOCIATES ENGINEERING CONSULTANTS 3788 MCCRAY ST. RIVERSIDE, CA. 92506	OF 4 SHEETS
W.O.: 98-417		FILE NO.: TIES.PRO
F.B.: 1998/534-544		