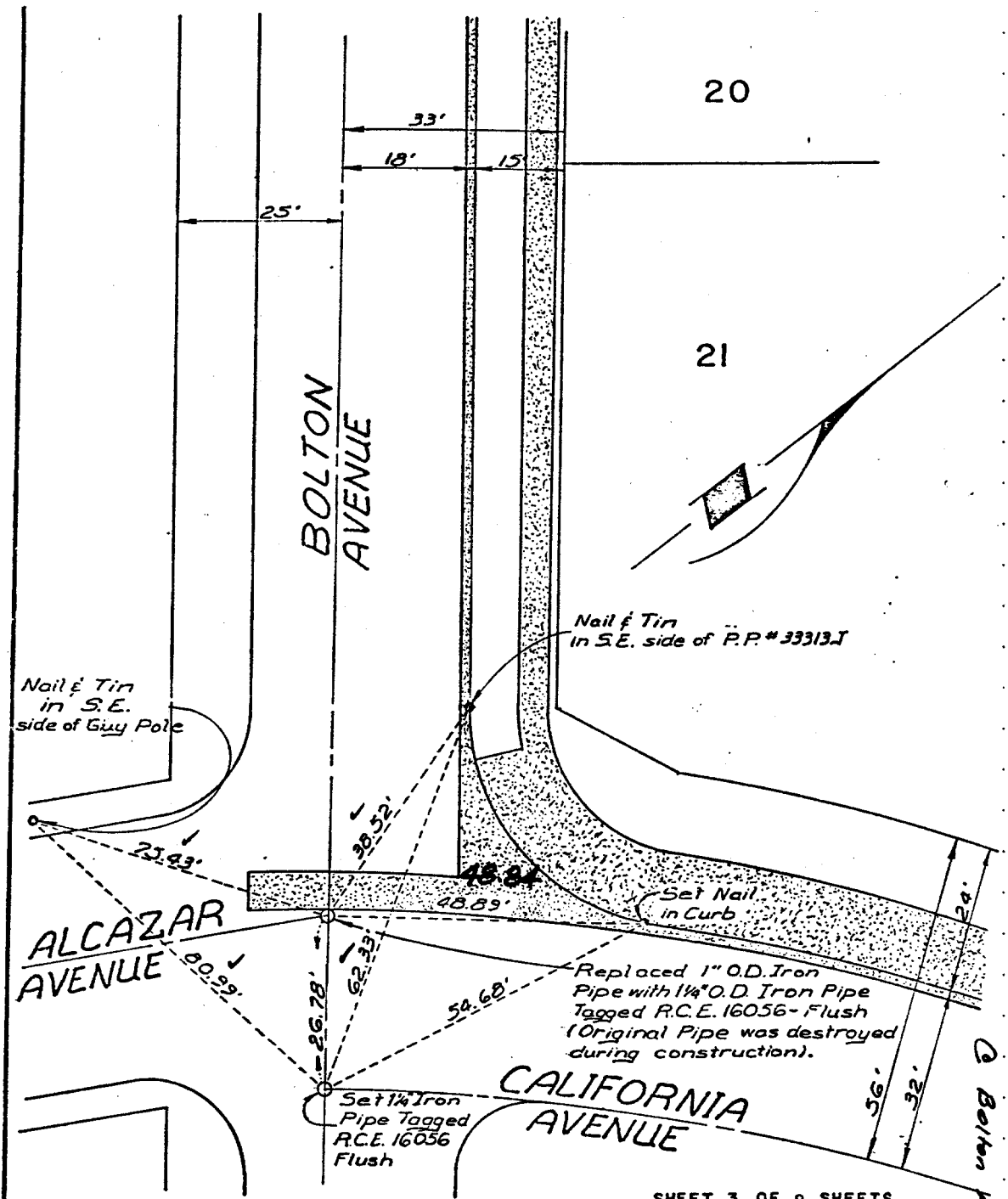


STREET ALCAZAR AVE X-STREET BOLTON AVE

OFFICE USE ONLY

101.71F



SHEET 3 OF 9 SHEETS

L A WAINSCOTT & ASSOCIATES  
 CIVIL ENGINEERS  
 GRAND TERRACE, CALIFORNIA  
 (714) 824-1775

CITY OF RIVERSIDE

TRACT NO. 8492

- ✕ FD. Ramset Nail on T/C
- FD. "C" Nail on T/C

- FD. LD. & TK. on T/C
- SET LD. & TK. On T/C

SCALE:

DATE:

DR. BY:

W.O.:

F.B.:

OFFICIAL TIE PLAT  
 CITY OF RIVERSIDE

*These ties are for the purpose of perpetuating the found monumentation. No claim is made as to the relationship of the points or lines shown hereon to true boundary locations.*

SHEET

OF SHEETS  
 FILE NO.: