

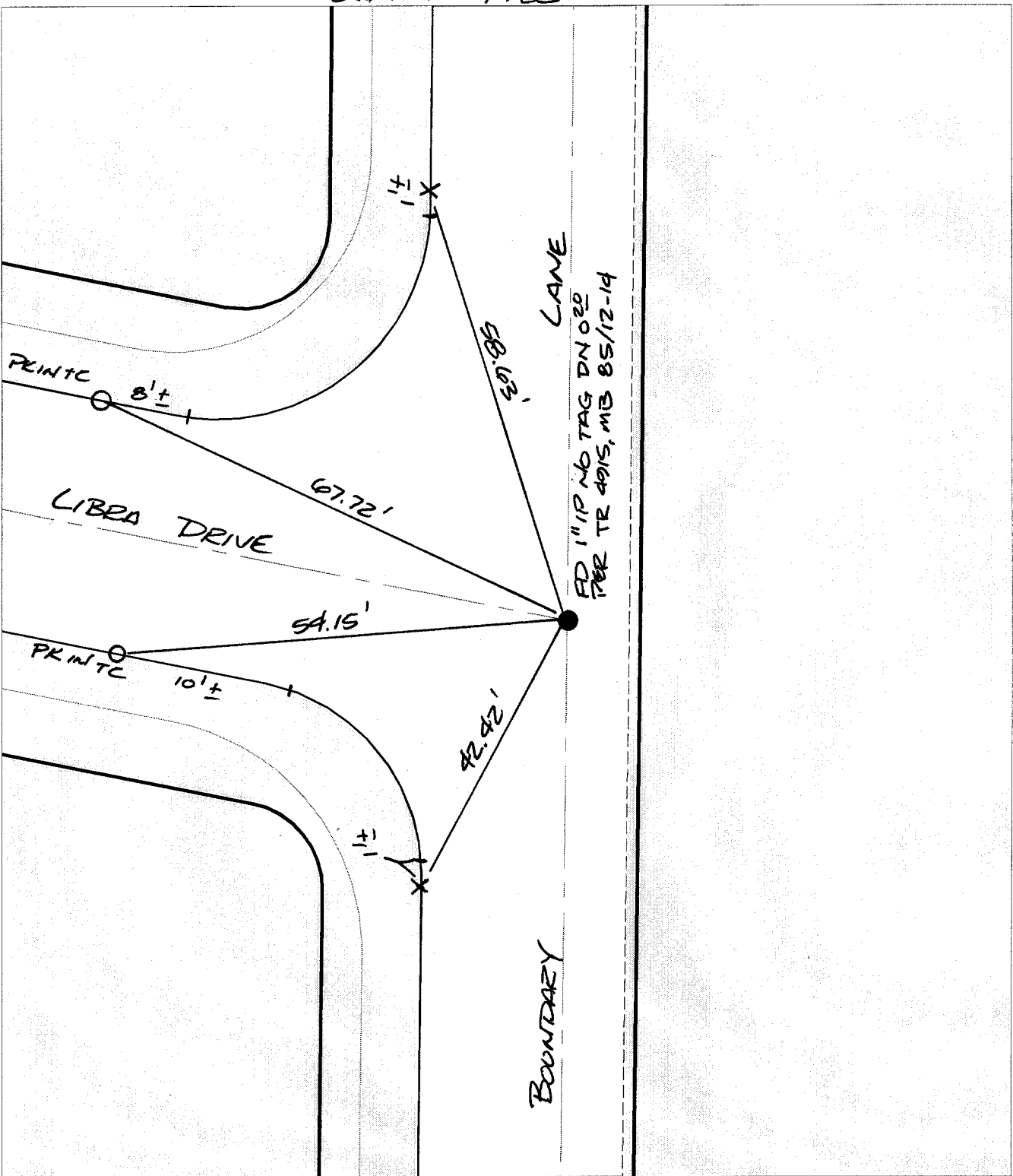
Street:  
10133

T/JF BOUNDARY LANE

X-Street:  
OFFICIAL USE ONLY

LIBRA DRIVE

SWING TIES



FD 1 1/8" NO TAG DN 022  
PER TR 4915, MB 85/12-14

BOUNDARY

- ✕ FD. Ramset Nail on T/C    ● FD. LD. & TK. on T/C
- FD. "C" Nail on T/C    ○ Set LD. & TK. on T/C

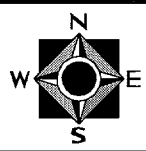
P.K. and City Engineer tag to be set @ surface after street construction is complete. (If possible)

Scale: 1" = 20'  
 Date: 04/23/02  
 Drawn by: scurtis  
 F.B.:  
 TR-Sec: T3SR6W-24

## OFFICIAL TIE PLAT

### CITY OF RIVERSIDE

*These ties are for the purpose of perpetuating the found monumentation. No claim is made as to the relationship of the points or lines shown hereon to true boundary locations.*



Sheet 1 of 1  
Cadme MB: 80-8