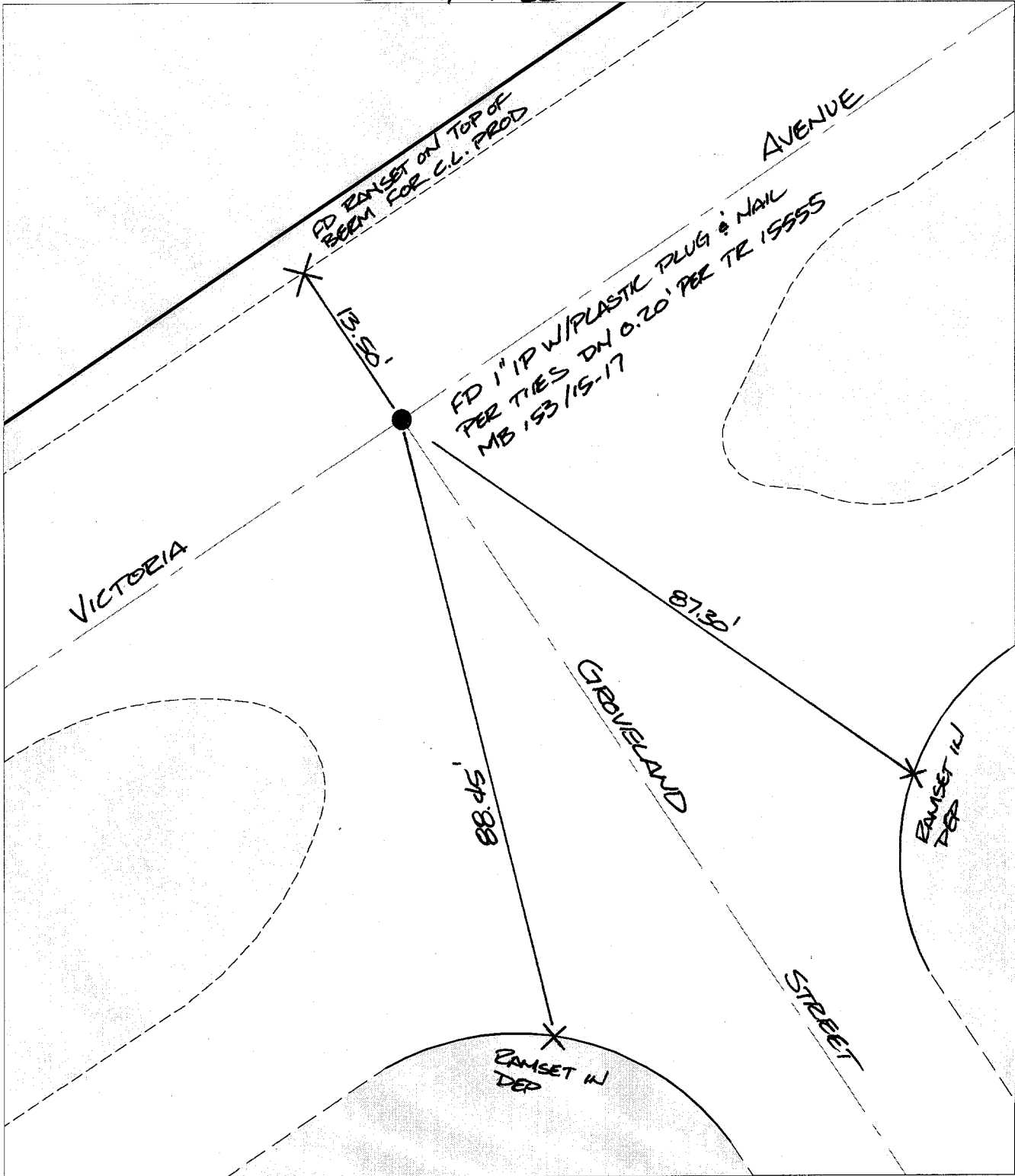


SWING TIES



Street: 10139

VICTORIA AVE T/I/F

X-Street: OFFICIAL USE ONLY

GROVELAND

- ✕ FD. Ramset Nail on T/C
- FD. LD. & TK. on T/C
- FD. "C" Nail on T/C
- Set LD. & TK. on T/C

P.K. and City Engineer tag to be set @ surface after street construction is complete. (If possible)

Scale: 1" = 20'

Date: 04/22/02


Drawn by: survey

F.B.:

TR-Sec: T3SR6W-24

OFFICIAL TIE PLAT
CITY OF RIVERSIDE

These ties are for the purpose of perpetuating the found monumentation. No claim is made as to the relationship of the points or lines shown hereon to true boundary locations.



Sheet 1 of 1

Cadme MB: 95-1