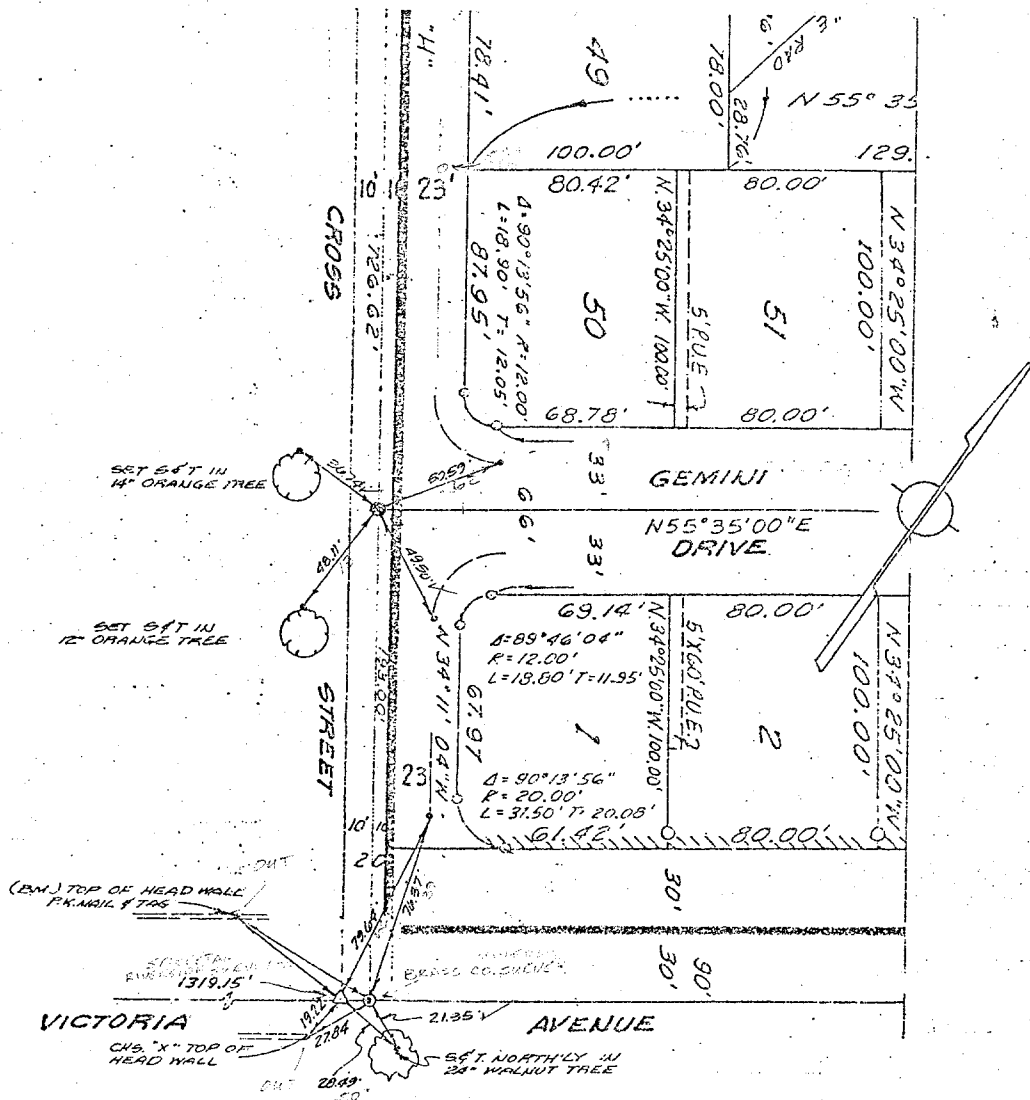


Street: **Cross**
10158.71E

OFFICIAL USE ONLY
 X-Street: **Victoria**



- ⊙ Indicates Set 1/2" Brass Cap Stamped R.C.E. 862
- ⊕ Indicates Set 3/4" Iron Pipe Tagged R.C.E. 862
- ⊗ Indicates Set Nail & Tagged R.C.E. 862 in Curb.
- ⊙ Indicates Set Nail in Curb, Unless Otherwise Noted.
- △ Indicates Found Nail & Tag Riverside County Surveyor Per C.S.F.B. 1062/3.

FLD. CLK. 3/5/78
 BA

DAVIDSON ASSOCIATES
 1426 TENTH STREET
 VERSIDE, CALIFORNIA

MONUMENT TIES
 FOR TRACT 4915

SHEET NO. 1 OF 8
 DATE FEB. 1978
 SCALE 1" = 60'

- ⊗ FD. Ramset Nail on T/C
- FD. LD. & TK. on T/C
- FD. "C" Nail on T/C
- Set LD. & TK. on T/C

Scale:
 Date:
 Drawn by:
 N.O.:
 B.B.:

OFFICIAL TIE PLAT
CITY OF RIVERSIDE
These ties are for the purpose of perpetuating the found monumentation. No claim is made as to the relationship of the points or lines shown hereon to true boundary locations.

Sheet 1 of 1
 File No.: