

Street: PINE

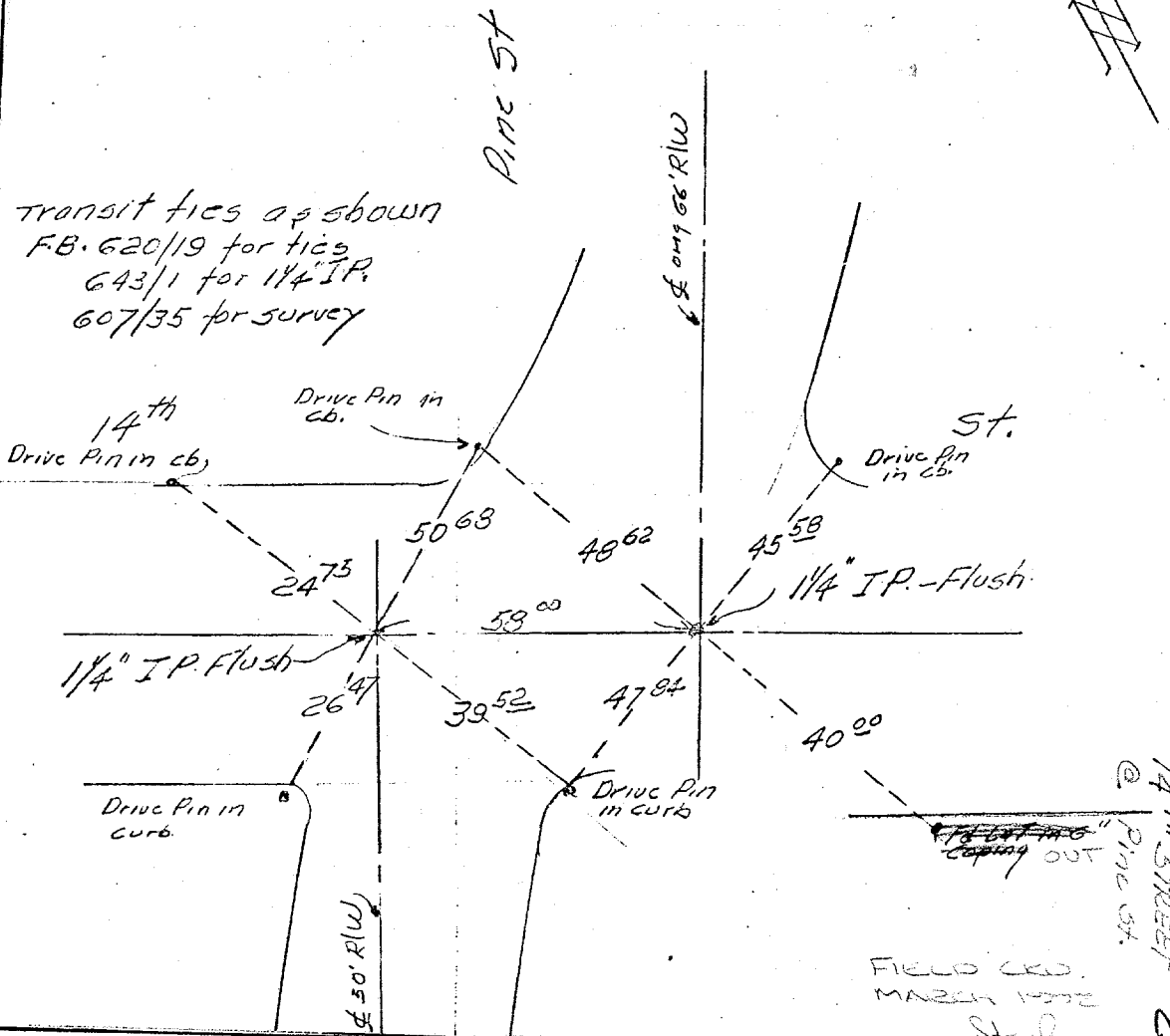
18164. TIE

OFFICIAL USE ONLY

X-Street: 14TH

14TH

PINE ST  
@ 14<sup>th</sup> ST



- ✕ FD. Ramset Nail on T/C
- FD. "C" Nail on T/C

- FD. LD. & TK. on T/C
- Set LD. & TK. on T/C

Scale:  
 Date:  
 Drawn by:  
 I.O.:  
 B.:

## OFFICIAL TIE PLAT

### CITY OF RIVERSIDE

*These ties are for the purpose of perpetuating the found monumentation. No claim is made as to the relationship of the points or lines shown hereon to true boundary locations.*

Sheet 1 of 1  
 File No.: