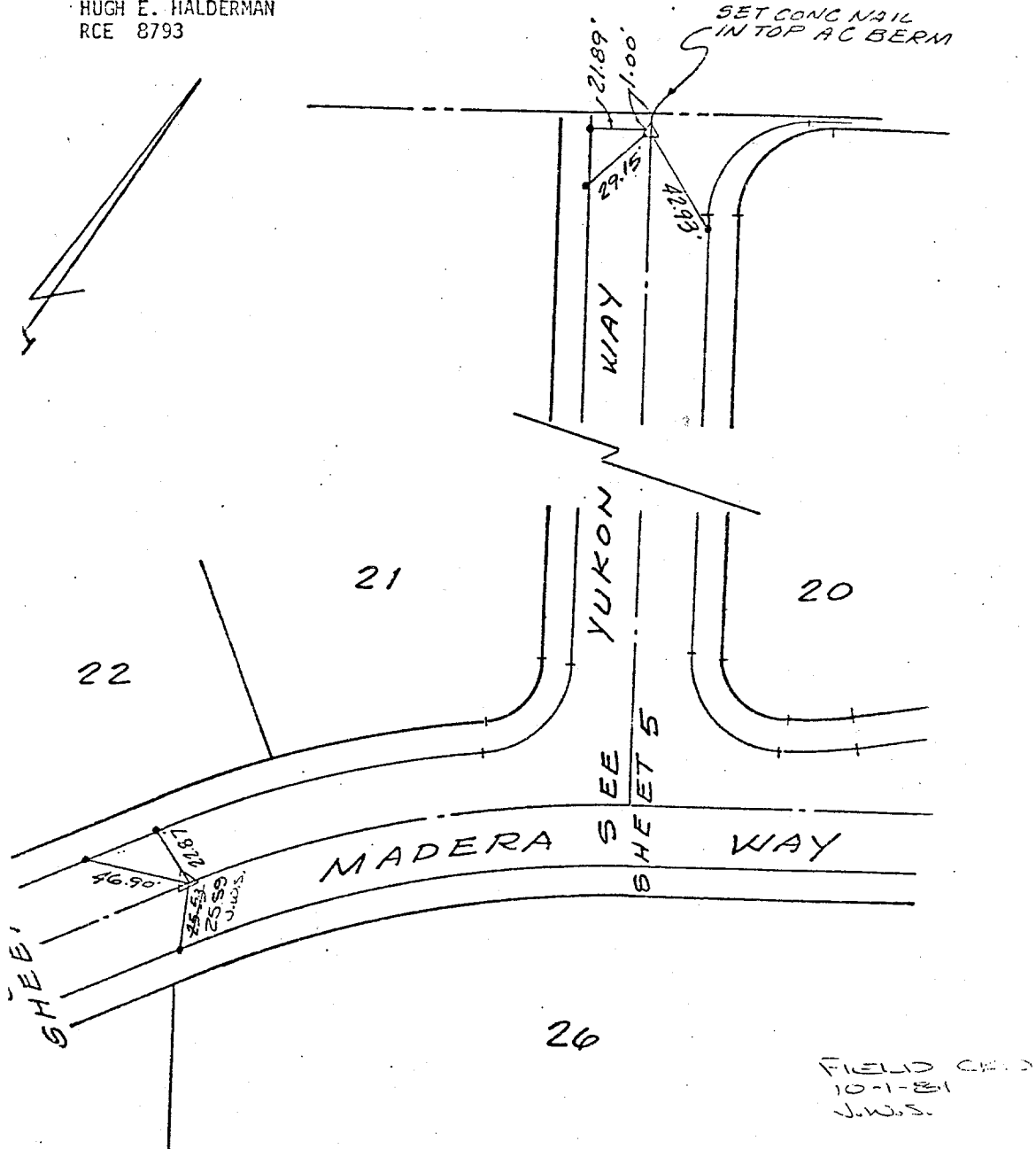


TIES

DATE: AUGUST, 1981

HUGH E. HALDERMAN
RCE 8793



- △ INDICATES SET STANDARD "B" MONUMENT: 18" LONG COPPER CLAD STEEL PIN WITH A 1½" BRASS CAP STAMPED RCE 8793 FLUSH
- INDICATES SET L & T TAGGED RCE 8793 IN TOP OF CURB, UNLESS OTHERWISE NOTED

- × FD. Ramset Nail on T/C
- FD. "C" Nail on T/C

- FD. LD. & TK. on T/C
- Set LD. & TK. on T/C

Street: **YUKON WAY**
~~10195. 11E~~
 X-Street: **MADERA WAY**
 OFFICIAL USE ONLY

Scale:
 Date:
 Drawn by:
 W.O.:
 F.B.:

OFFICIAL TIE PLAT
CITY OF RIVERSIDE

These ties are for the purpose of perpetuating the found monumentation. No claim is made as to the relationship of the points or lines shown hereon to true boundary locations.

Sheet 1 of 1
 File No.: