

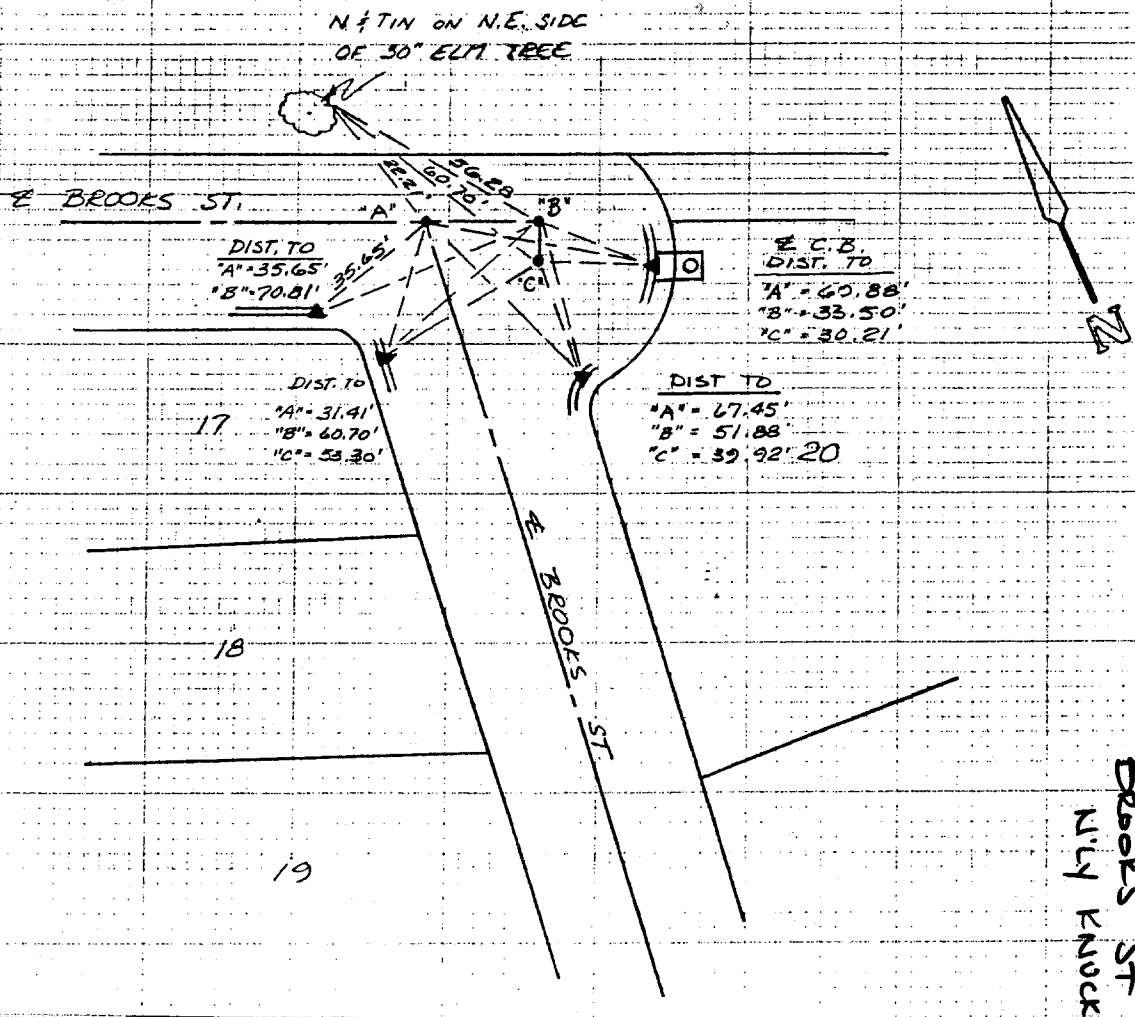
**SHALLER & LOHR, INC**  
 1503 SOUTH COAST DRIVE - SUITE 203  
 COSTA MESA, CALIFORNIA 92626  
 (714) 754-5714  
 LAND PLANNING - CIVIL ENGINEERING -  
 SURVEYING

*E Ties on Brooks*  
 T.C. 17488 - Riverside

JOB NO. \_\_\_\_\_  
 BY \_\_\_\_\_  
 DATE 10-4-85  
 SHT. 3 OF 4

Street: ~~BROOKS ST~~  
 1988. TIF  
 OFFICIAL USE ONLY  
 X-Street: ~~BROOKS ST~~

- Denotes 3/4" I.P. tagged RCE 9455, Flush
- ▲ Denotes Nail in top of curb



- ✕ FD. Ramset Nail on T/C
- FD. LD. & TK. on T/C
- FD. "C" Nail on T/C
- Set LD. & TK. on T/C

Scale: \_\_\_\_\_  
 Date: \_\_\_\_\_  
 Drawn by: \_\_\_\_\_  
 W.O.: \_\_\_\_\_  
 F.B.: \_\_\_\_\_

**OFFICIAL TIE PLAT**  
 CITY OF RIVERSIDE

*These ties are for the purpose of perpetuating the found  
 monumentation. No claim is made as to the relationship of  
 the points or lines shown hereon to true boundary locations.*

Sheet 1 of 1  
 File No.: \_\_\_\_\_