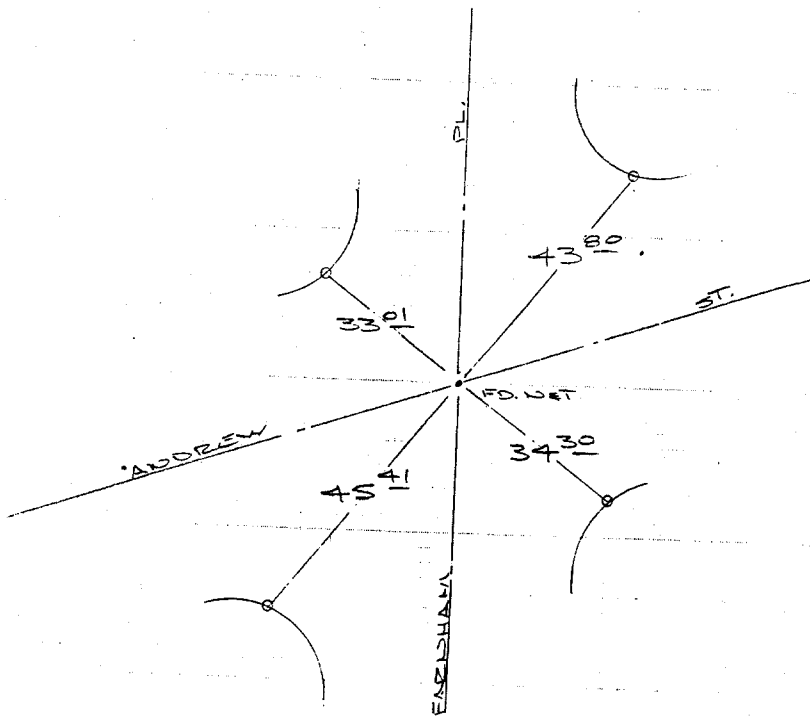


HISTORICAL DATA

TRANSIT TIES

Street: **FARHAM**
10212 TIE

X-Street: **ANDREW**
 OFFICIAL USE ONLY



**FARHAM PL
 AT ANDREWS**

○ INDICATES LOT'S SETTING

✕ FD. Ramset Nail on T/C
 ■ FD. "C" Nail on T/C

● FD. LD. & TK. on T/C
 ○ Set LD. & TK. on T/C

Scale:
 Date:
 Drawn by:
 W.O.:
 F.B.:

**OFFICIAL TIE PLAT
 CITY OF RIVERSIDE**

These ties are for the purpose of perpetuating the found monumentation. No claim is made as to the relationship of the points or lines shown hereon to true boundary locations.

Sheet 1 of 1
 File No.: