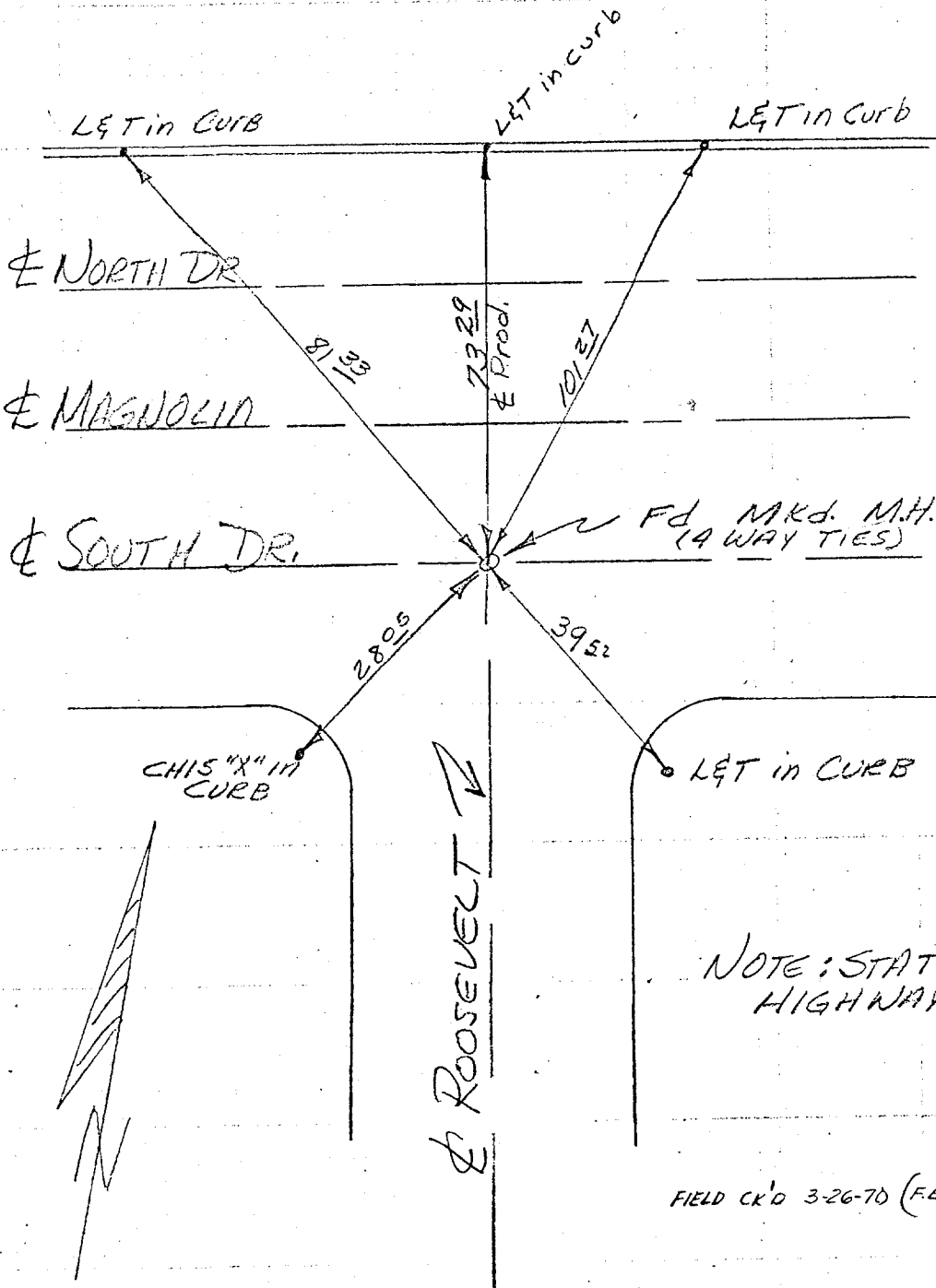


ROOSEVELT AVE
AT MAGNOLIA
(SOUTH)

Street: Roosevelt
10213.71E

OFFICIAL USE ONLY

X-Street: Magnolia (South)



NOTE: STATE
HIGHWAY TIE

FIELD CK'D 3-26-70 (F.E.L.)

- ✕ FD. Ramset Nail on T/C
- FD. "C" Nail on T/C

- FD. LD. & TK. on T/C
- Set LD. & TK. on T/C

OFFICIAL TIE PLAT
CITY OF RIVERSIDE

*These ties are for the purpose of perpetuating the found
monumentation. No claim is made as to the relationship of
the points or lines shown hereon to true boundary locations.*

Sheet 1 of 1

File No.:

Scale:
Date:
Drawn by:
0.:
3.: