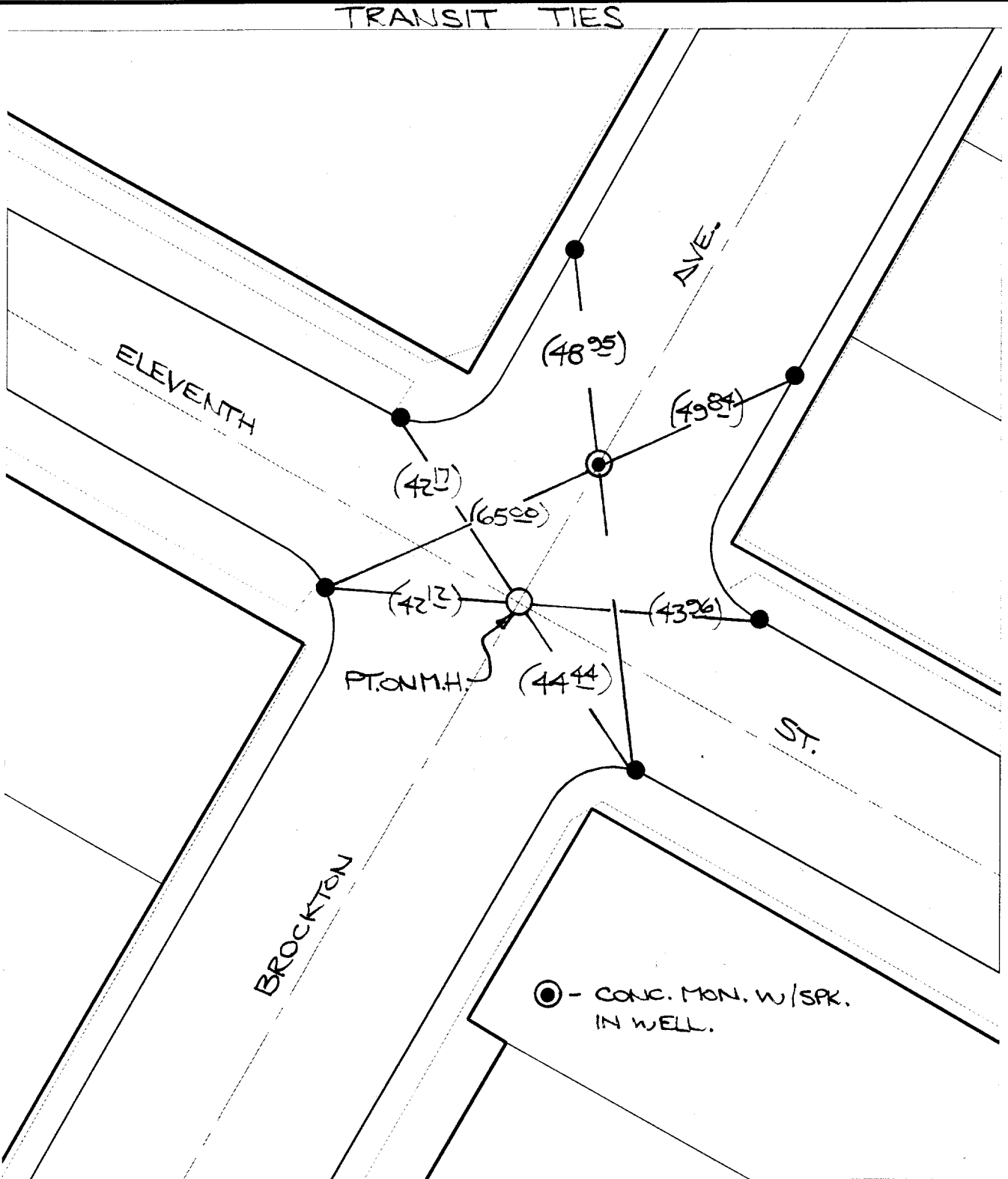


Street: BROCKTON AVENUE X-Street: ELEVENTH STREET  
 OFFICIAL USE ONLY



- ✕ FD. Ramset Nail on T/C
- FD. LD. & TK. on T/C
- FD. "C" Nail on T/C
- Set LD. & TK. on T/C

○ - CONC. MON. W/SPK. IN WELL.

Scale: 1" = 30'  
 Date: 10/30/98  
 Drawn by: bmark *bjz*  
 W.O.:  
 F.B.:

## OFFICIAL TIE PLAT

### CITY OF RIVERSIDE

*These ties are for the purpose of perpetuating the found monumentation. No claim is made as to the relationship of the points or lines shown hereon to true boundary locations.*



Sheet 1 of 1  
 File No.:

1023. T.F.F