

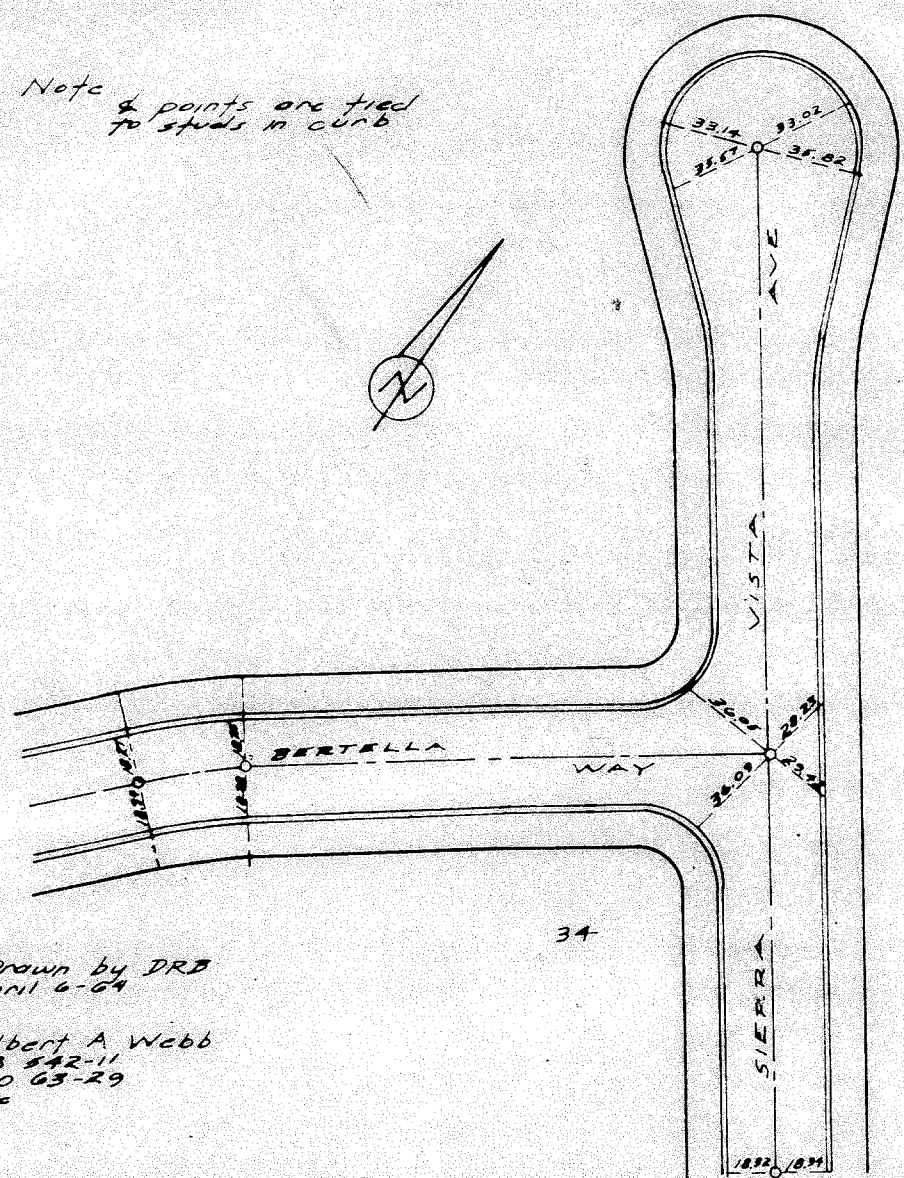
Street: Bertella
10235 T/C

OFFICIAL USE ONLY

X-Street: Vista

TRACT 2612

Note & points are tied to studs in curb



Drawn by DRB
April 6-64
Albert A Webb
FB 542-11
W/O 63-29
File

SIERRA VISTA
C BERTELLA WAY

× FD. Ramset Nail on T/C
■ FD. "C" Nail on T/C

● FD. LD. & TK. on T/C
○ Set LD. & TK. on T/C

Scale:
Date:
Drawn by:
W.O.:
F.B.:

OFFICIAL TIE PLAT

CITY OF RIVERSIDE

These ties are for the purpose of perpetuating the found monumentation. No claim is made as to the relationship of the points or lines shown hereon to true boundary locations.

Sheet 1 of 1

File No.: