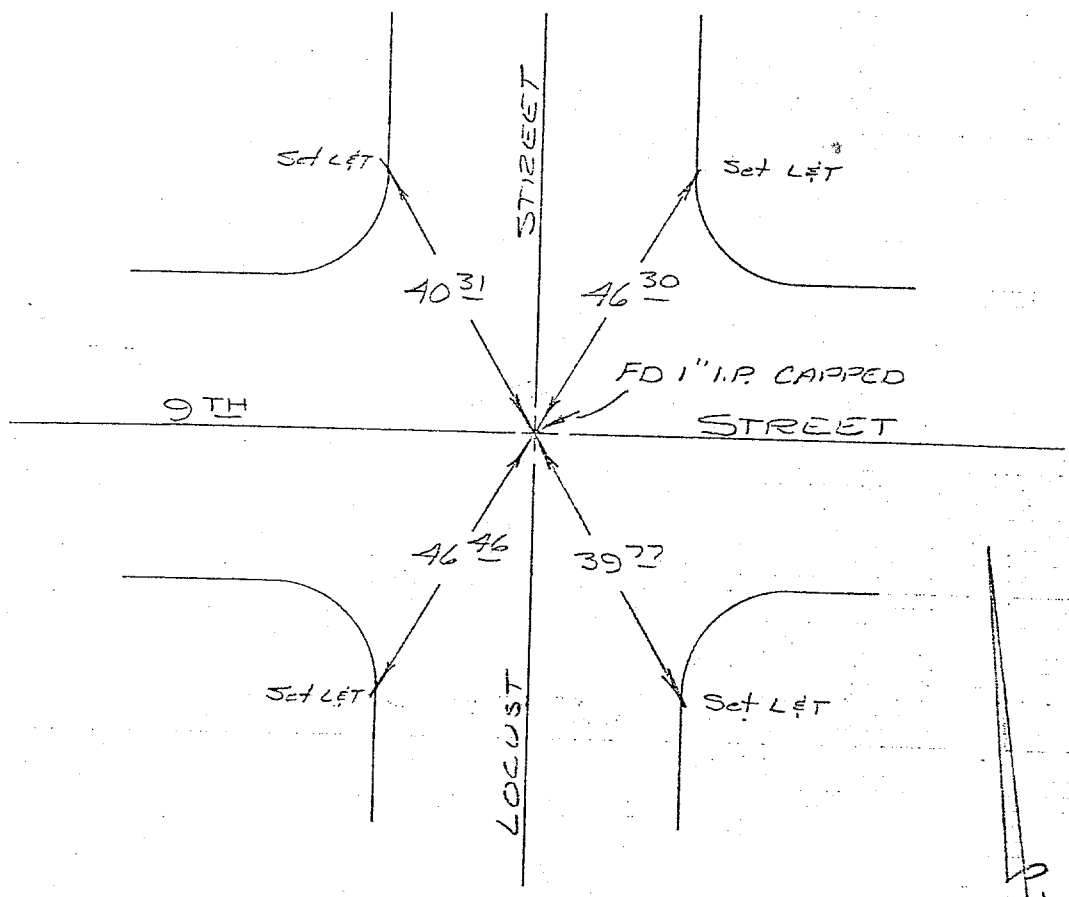


Street: **LOCUST**  
10257.711'

OFFICIAL USE ONLY

X-Street: **9TH**

AT 9 1/2 ST  
②  
5



7 1/4" STREET  
@ LOCUST ST.

FB 696/39  
2-5-65  
J.W.L.

- ✕ FD. Ramset Nail on T/C
- FD. LD. & TK. on T/C
- FD. "C" Nail on T/C
- Set LD. & TK. on T/C

Scale:  
Date:  
Drawn by:  
W.O.:  
F.B.:

## OFFICIAL TIE PLAT CITY OF RIVERSIDE

*These ties are for the purpose of perpetuating the found monumentation. No claim is made as to the relationship of the points or lines shown hereon to true boundary locations.*

Sheet 1 of 1  
File No.: