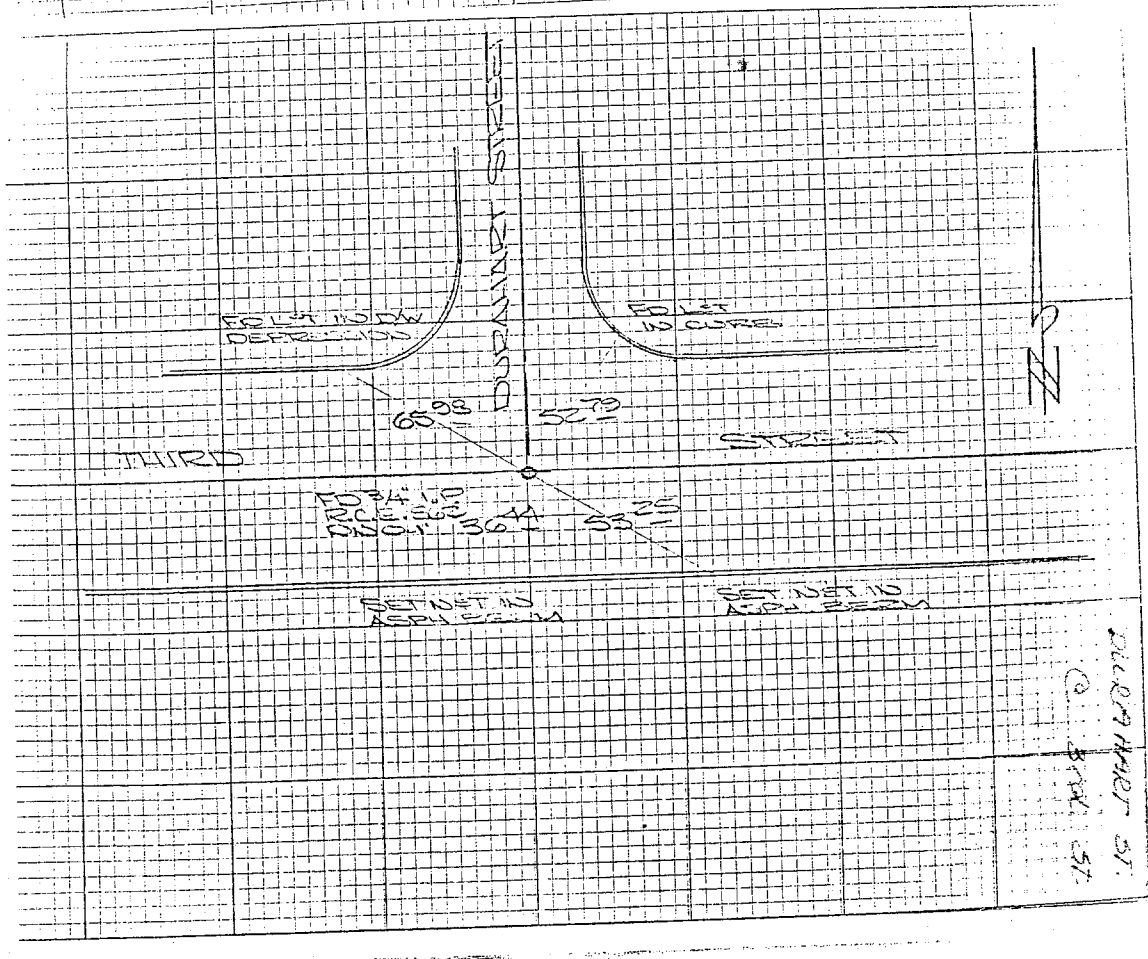


Street: **Durham St**
 10276.716

X-Street: **Third**
 OFFICIAL USE ONLY

HISTORICAL DATA	TRANSIT TIES	CREW STEELE GARCIA PIPPIN NOV. 21, 1979 CRTS. 1021/7
-----------------	--------------	---



CRTS. 1021/7
 DURHAM ST.
 10276.716

- ✗ FD. Ramset Nail on T/C
- FD. LD. & TK. on T/C
- FD. "C" Nail on T/C
- Set LD. & TK. on T/C

Scale:
 Date:
 Drawn by:
 W.O.:
 F.B.:

OFFICIAL TIE PLAT

CITY OF RIVERSIDE

These ties are for the purpose of perpetuating the found monumentation. No claim is made as to the relationship of the points or lines shown hereon to true boundary locations.

Sheet 1 of 1
 File No.: