

Street: **LEWIS**  
 10291 1/2

OFFICIAL USE ONLY

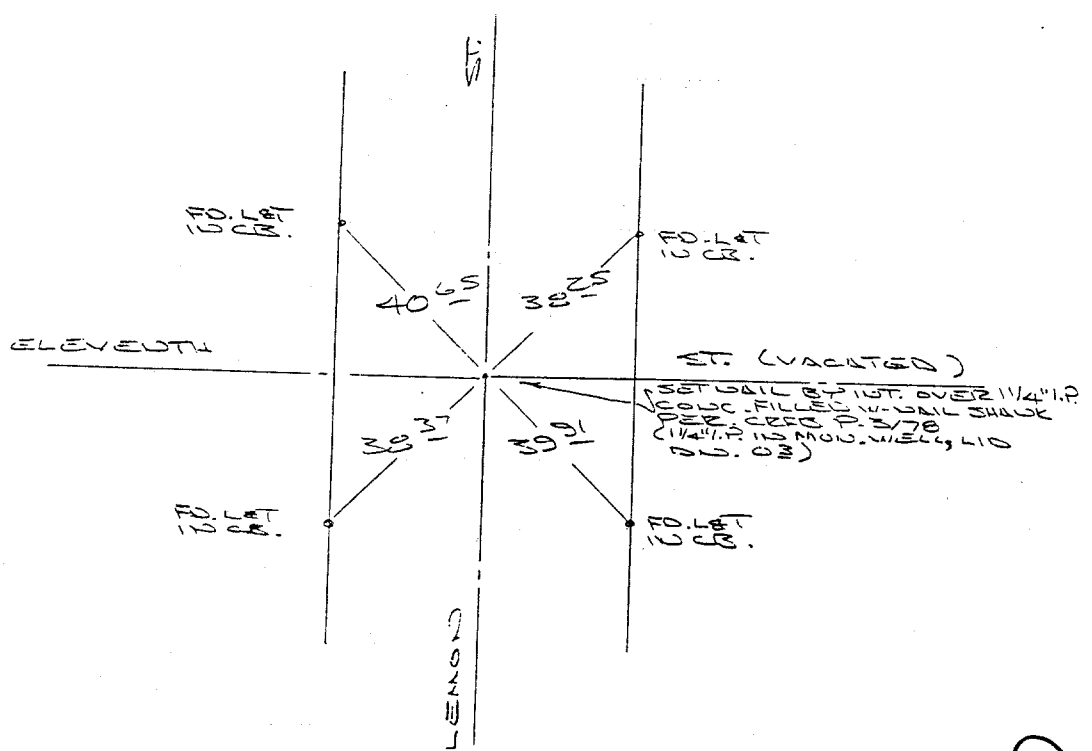
X-Street: **ELEVENTH**

ELEVENTH ST.

(12)

HISTORICAL DATA  
 FB P3/78

TRANSIT TIES



5-448

- ✕ FD. Ramset Nail on T/C
- FD. LD. & TK. on T/C
- FD. "C" Nail on T/C
- Set LD. & TK. on T/C

Scale:  
 Date:  
 Drawn by:  
 W.O.:  
 F.B.:

**OFFICIAL TIE PLAT**  
 CITY OF RIVERSIDE

*These ties are for the purpose of perpetuating the found monumentation. No claim is made as to the relationship of the points or lines shown hereon to true boundary locations.*

Sheet 1 of 1  
 File No.: