

HISTORICAL DATA  
A. WEBB FE 1031/193

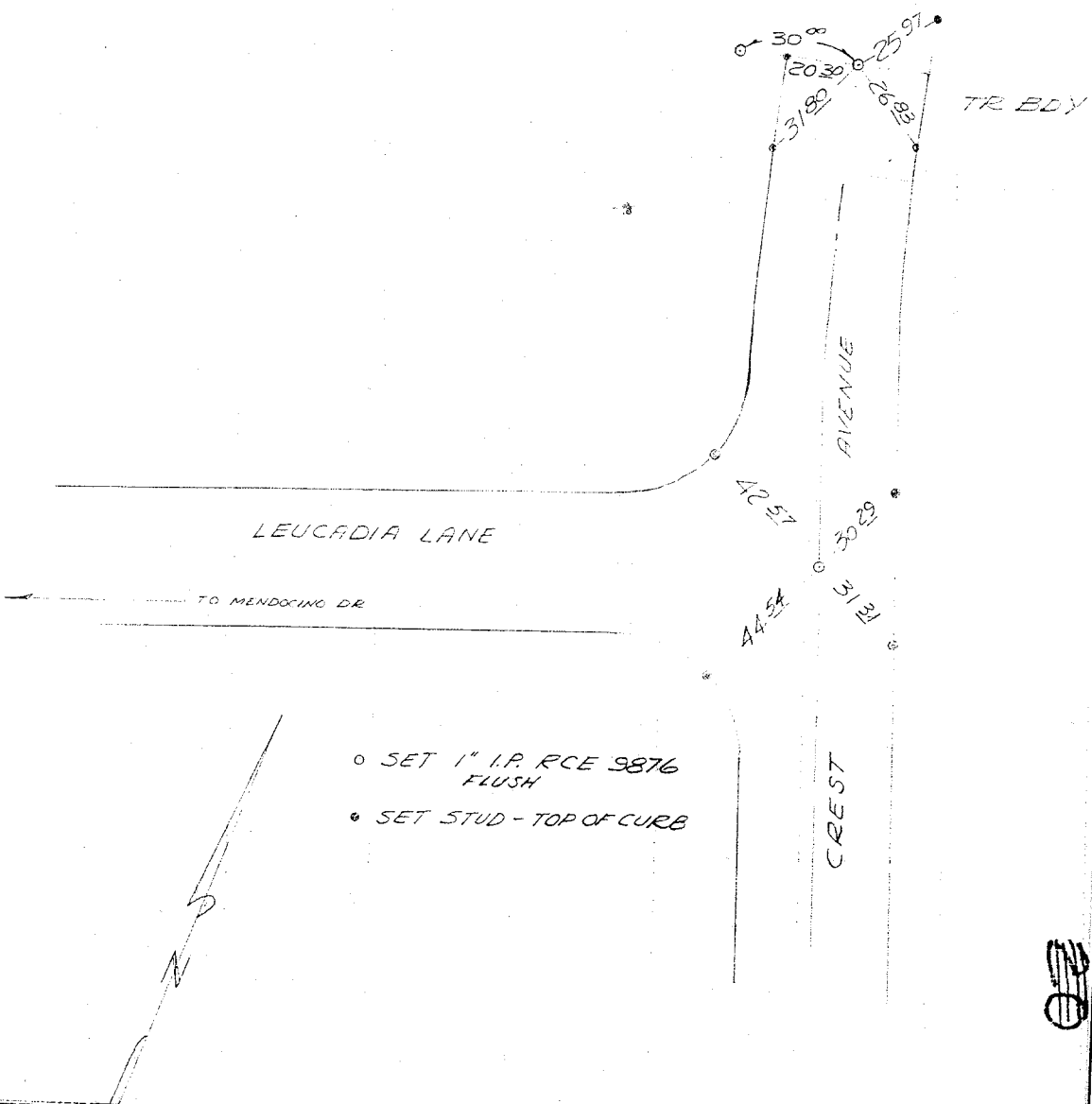
§ TIES  
CREST AVE  
LEUCADIA LANE

CREW  
A. M. WEBB  
AGUILERA  
EVANS  
ROBERTSON  
DEC 23, 1975

TRACT 5522-1

Street: LEUCADIA  
1029 S. TIE

X-Street: CREST  
OFFICIAL USE ONLY



- SET 1" I.P. RCE 9876 FLUSH
- SET STUD - TOP OF CURB

- × FD. Ramset Nail on T/C
- FD. "C" Nail on T/C
- FD. LD. & TK. on T/C
- Set LD. & TK. on T/C

Scale:  
Date:  
Drawn by:  
O. S. No.:  
B. S. No.:

**OFFICIAL TIE PLAT**  
CITY OF RIVERSIDE

*These ties are for the purpose of perpetuating the found monumentation. No claim is made as to the relationship of the points or lines shown hereon to true boundary locations.*

Sheet 1 of 1  
File No.: