

SEVENTH ST MAIN ST

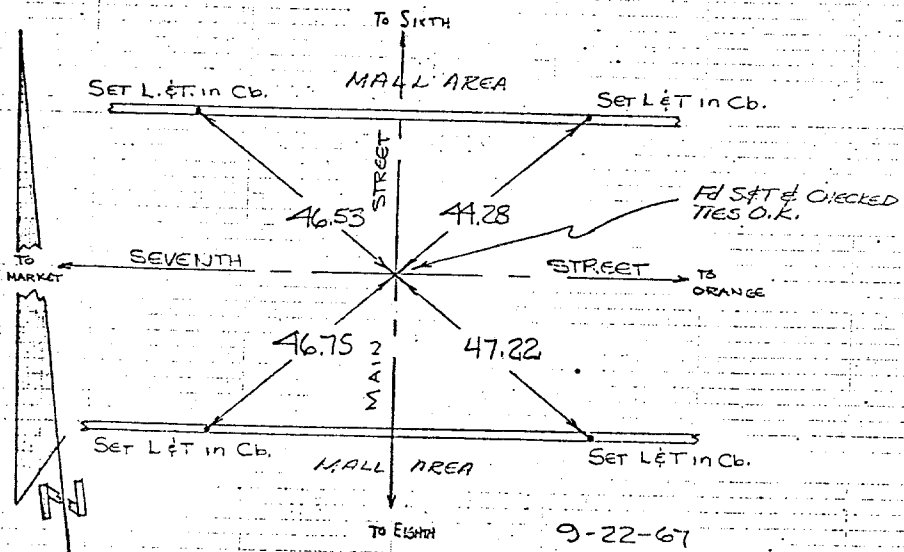
TRANSIT TIES

HISTORICAL DATA	
1.	

REFERENCE  
J.F.D.F.B. 952/60

Street: **MAIN**  
10308 FT

X-Street: **TH**  
OFFICIAL USE ONLY



9-22-67  
HUTCHINSON  
THORP  
MORGAN  
FR 844/25  
FIELD CHECK  
11-26-73  
JAMES

- ✕ FD. Ramset Nail on T/C
- FD. LD. & TK. on T/C
- FD. "C" Nail on T/C
- Set LD. & TK. on T/C

Scale:  
Date:  
Drawn by:  
W.O.:  
F.B.:

## OFFICIAL TIE PLAT

### CITY OF RIVERSIDE

*These ties are for the purpose of perpetuating the found monumentation. No claim is made as to the relationship of the points or lines shown hereon to true boundary locations.*

Sheet 1 of 1  
File No.: