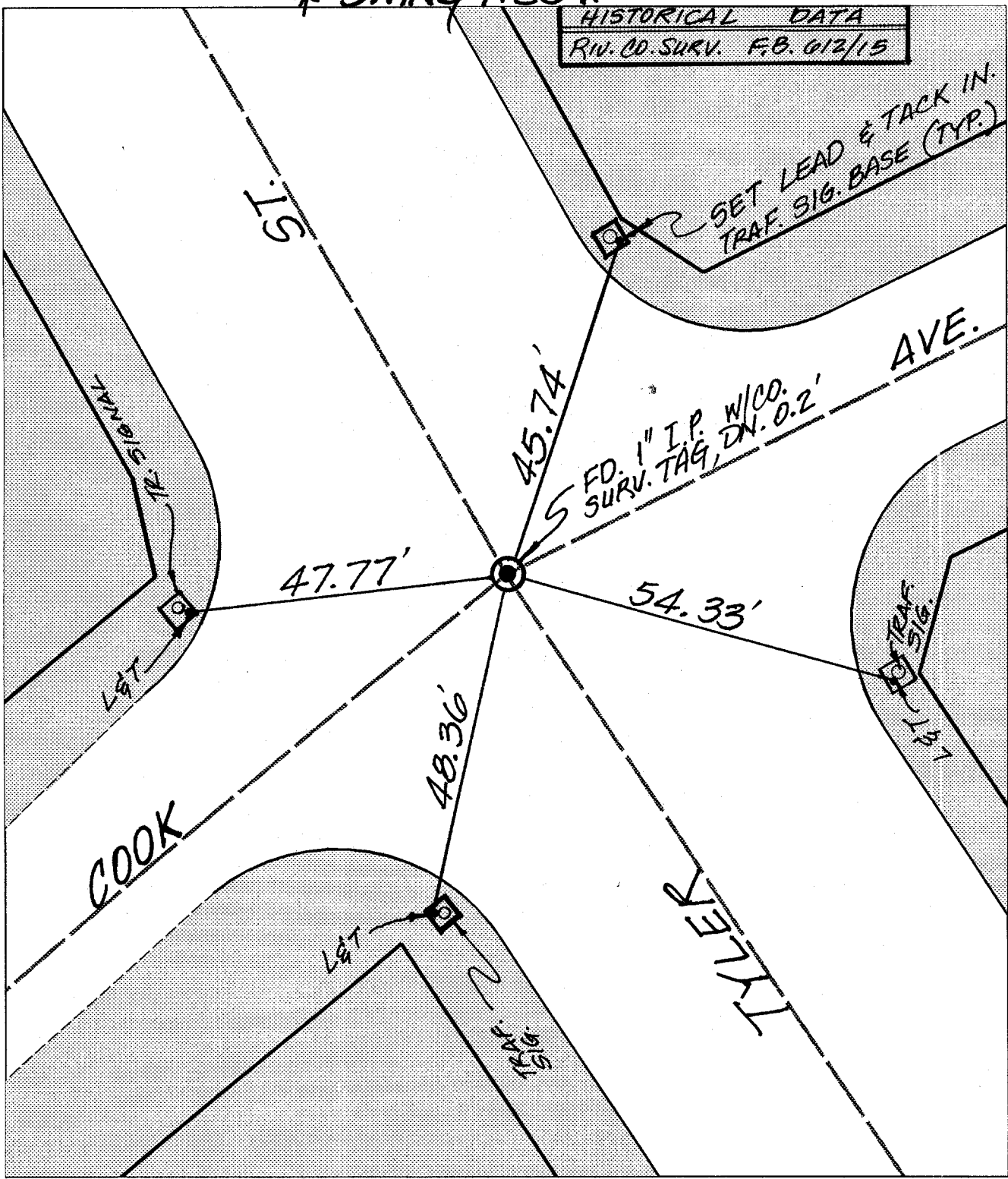


**\* SWING TIES \***

HISTORICAL DATA  
RIV. CO. SURV. F.B. 012/15

SET LEAD & TACK IN.  
TRAF. SIG. BASE (TYP.)



Street: **10330 TIF**  
TYLER ST  
X-Street: COOK AVE  
OFFICIAL USE ONLY

- ✕ FD. Ramset Nail on T/C
- FD. LD. & TK. on T/C
- FD. "C" Nail on T/C
- Set LD. & TK. on T/C

Scale: 1" = 20' N.T.S.  
 Date: 03/01/99  
 Drawn by: scurtis, KGE.  
 W.O.:  
 F.B.:

**OFFICIAL TIE PLAT**  
 CITY OF RIVERSIDE

*These ties are for the purpose of perpetuating the found monumentation. No claim is made as to the relationship of the points or lines shown hereon to true boundary locations.*



Sheet 1 of 1  
 File No.: