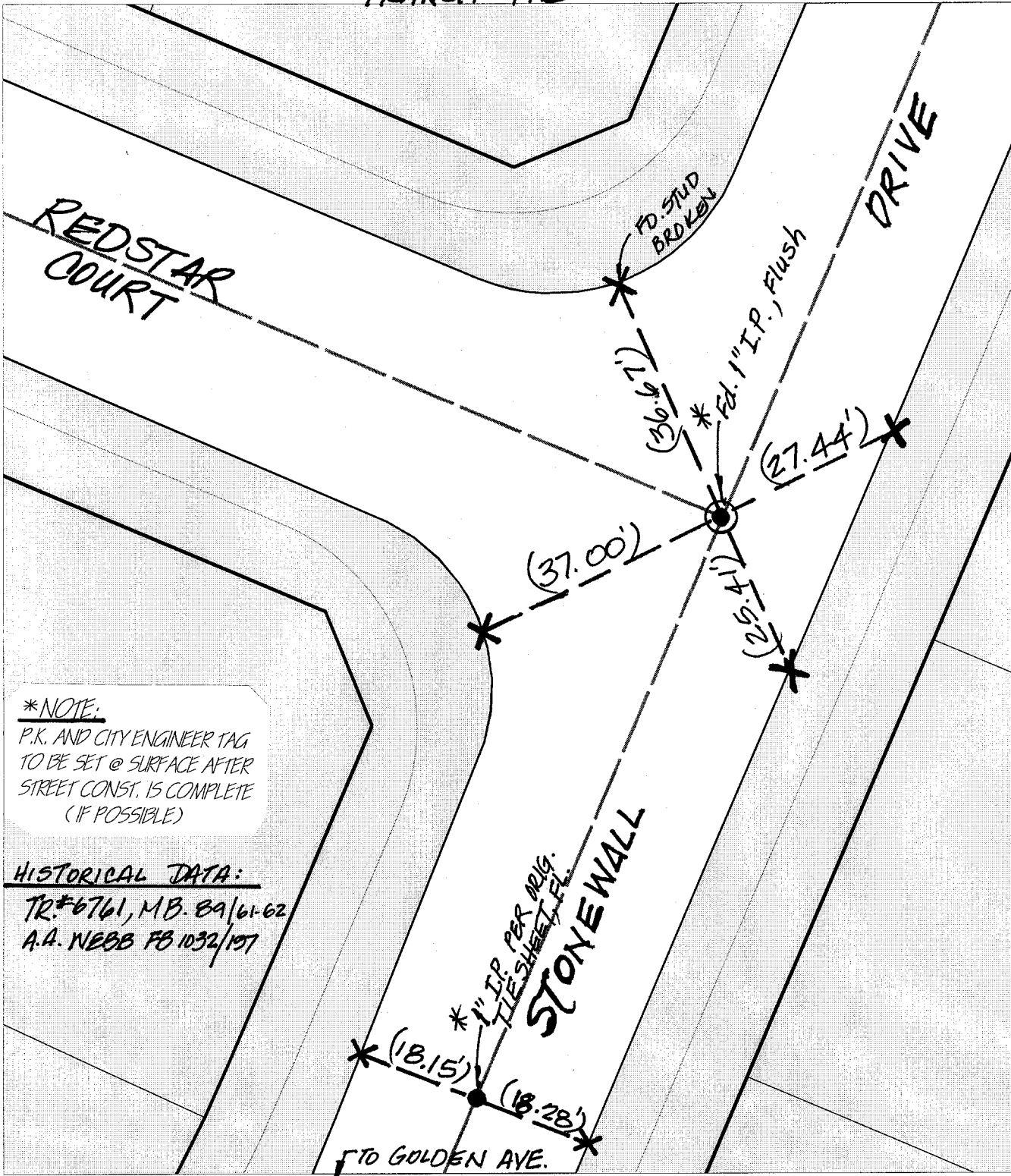


TRANSIT TIES



***NOTE:**

P.K. AND CITY ENGINEER TAG
TO BE SET @ SURFACE AFTER
STREET CONST. IS COMPLETE
(IF POSSIBLE)

HISTORICAL DATA:

TR. #6761, M.B. 89/61-62
A.A. NEBB FB 1032/107

- ✕ FD. Ramset Nail on T/C
- FD. "C" Nail on T/C

- FD. LD. & TK. on T/C
- Set LD. & TK. on T/C

Street: **10355 TIF** STONEWALL DRIVE
X-Street: REDSTAR COURT
OFFICIAL USE ONLY

Scale: 1" = 20'

Date: 12/22/99

Drawn by: K.G.E.

W.O.:

F.B.:

OFFICIAL TIE PLAT

CITY OF RIVERSIDE

*These ties are for the purpose of perpetuating the found
monumentation. No claim is made as to the relationship of
the points or lines shown hereon to true boundary locations.*



Sheet 1 of 1

File No.: