

* TRANSIT TIES *

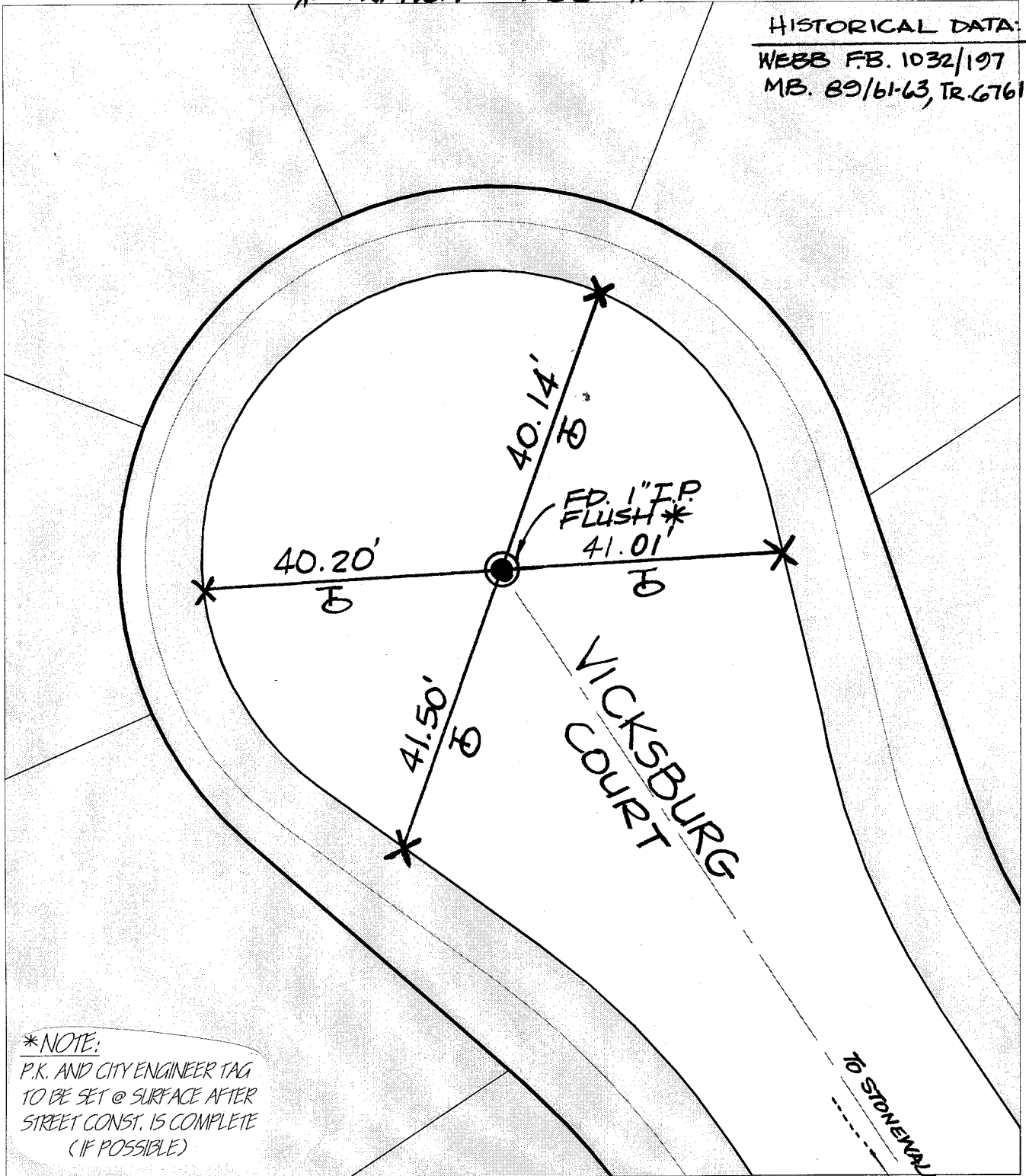
HISTORICAL DATA:
WEBB F.B. 1032/197
MB. 89/61-63, TR. 6761

CUL-DE-SAC
N. OF STONEWALL DR.

X-Street:
OFFICIAL USE ONLY

VICKSBURG
COURT

Street:
10327.TIF



*NOTE:
P.K. AND CITY ENGINEER TAG
TO BE SET @ SURFACE AFTER
STREET CONST. IS COMPLETE
(IF POSSIBLE)

- ✕ FD. Ramset Nail on T/C
- FD. LD. & TK. on T/C
- FD. "C" Nail on T/C
- Set LD. & TK. on T/C

Scale: 1" = 20'

Date: 09/03/98

Drawn by: bmark

W.O.:

F.B.:

OFFICIAL TIE PLAT

CITY OF RIVERSIDE

These ties are for the purpose of perpetuating the found monumentation. No claim is made as to the relationship of the points or lines shown hereon to true boundary locations.



Sheet 1 of 1

File No.: