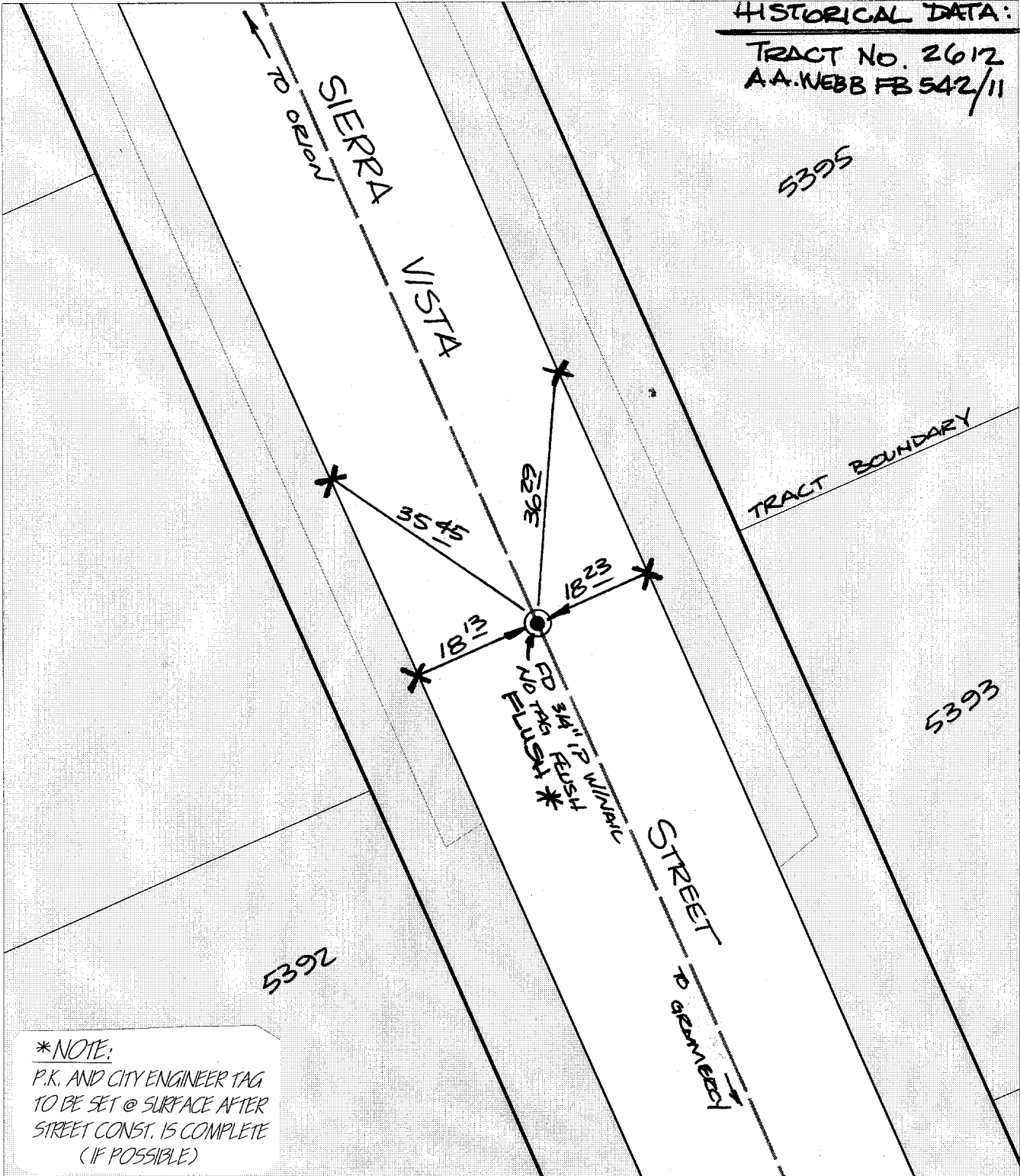


"SWING TIES"

HISTORICAL DATA:

TRACT No. 2612
A.A. WEBB FB 542/11



Street: **10305 TIF** SIERRA VISTA
 X-Street: TR BDY S'LY OF ORION
 OFFICIAL USE ONLY

***NOTE:**

P.K. AND CITY ENGINEER TAG
TO BE SET @ SURFACE AFTER
STREET CONST. IS COMPLETE
(IF POSSIBLE)

✕ FD. Ramset Nail on T/C
 ■ FD. "C" Nail on T/C

● FD. LD. & TK. on T/C
 ○ Set LD. & TK. on T/C

Scale: 1" = 20'

Date: 12/21/99

Drawn by: scurtis

W.O.:

F.B.:

OFFICIAL TIE PLAT

CITY OF RIVERSIDE

*These ties are for the purpose of perpetuating the found
 monumentation. No claim is made as to the relationship of
 the points or lines shown hereon to true boundary locations.*



Sheet 1 of 1

File No.: