

SWING & TRANSIT TIES

HISTORICAL DATA:

TRACT No. 2612
A.A. Webb FB 542-11

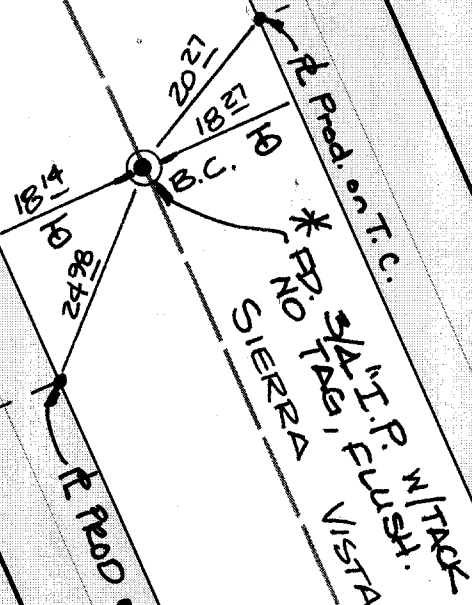
51

50

36

37

TO BEVELLA WAY
R = 400'



***NOTE:**
P.K. AND CITY ENGINEER TAG
TO BE SET @ SURFACE AFTER
STREET CONST. IS COMPLETE
(IF POSSIBLE)

- ✕ FD. Ramset Nail on T/C
- FD. LD. & TK. on T/C
- FD. "C" Nail on T/C
- Set LD. & TK. on T/C

Street: **10346 TIE**
SIERRA VISTA
X-Street: B.C. N'LY OF ORION
OFFICIAL USE ONLY

Scale: 1" = 20'
Date: 12/21/99
Drawn by: scurtis, GB
W.O.:
F.B.:

OFFICIAL TIE PLAT
CITY OF RIVERSIDE

These ties are for the purpose of perpetuating the found monumentation. No claim is made as to the relationship of the points or lines shown hereon to true boundary locations.



Sheet 1 of 1
File No.: