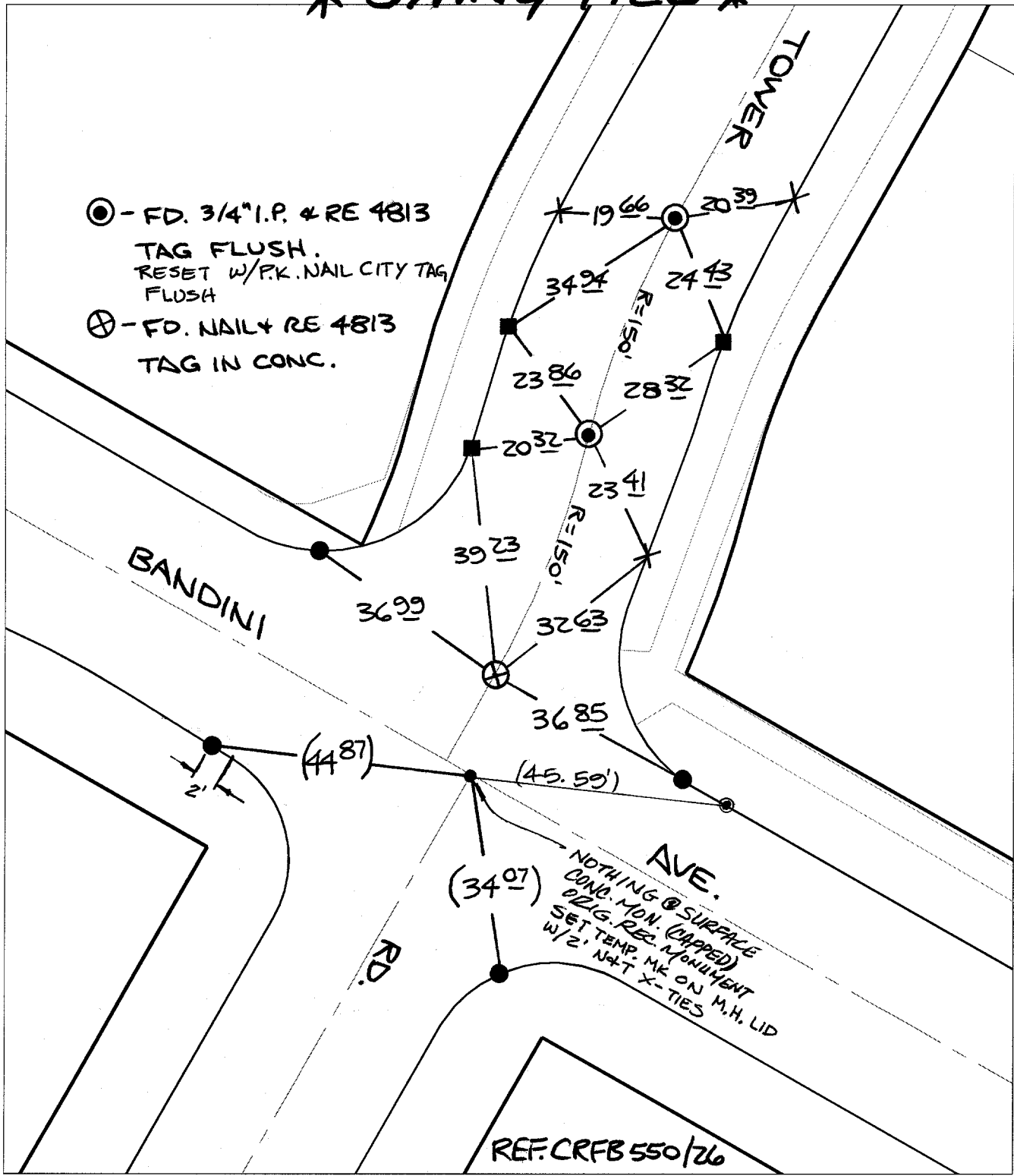


*** SWING TIES ***

Street: **10371 TIF** BANDINI AVE. X-Street: TOWER RD. OFFICIAL USE ONLY

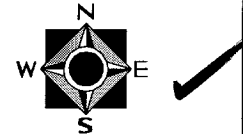


- ✕ FD. Ramset Nail on T/C
- FD. LD. & TK. on T/C
- FD. "C" Nail on T/C
- Set LD. & TK. on T/C

Scale: 1" = 25'
 Date: 11/30/99
 Drawn by: survey *SL*
 W.O.:
 F.B.:

OFFICIAL TIE PLAT
 CITY OF RIVERSIDE

These ties are for the purpose of perpetuating the found monumentation. No claim is made as to the relationship of the points or lines shown hereon to true boundary locations.



Sheet 1 of 1
 File No.:

REF. CRFB 550/26