

HISTORICAL DATA  
 A. WEBB FB 1031/193  
 TRACT 5522-1

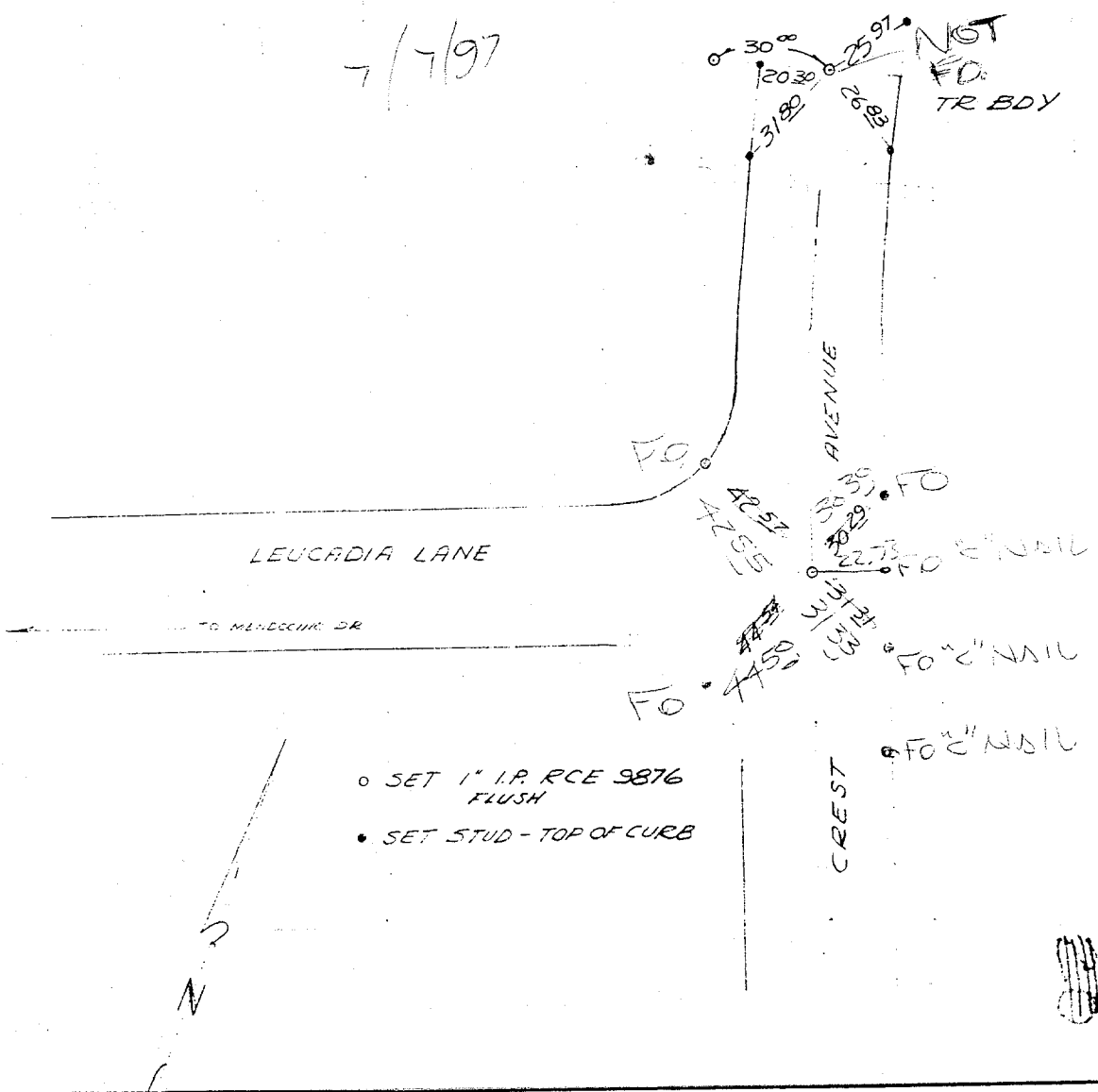
4 TIES  
 CREST AVE  
 LEUCADIA LANE

CREW  
 A.A. WEBB  
 AGUILERA  
 EVANS  
 ROBERTSON  
 DEC 23, 1975

Street: **CREST**  
**10392.TIF**

X-Street: **Leucadia**  
 OFFICIAL USE ONLY

7/7/97



- SET 1" I.P. RCE 9876 FLUSH
- SET STUD - TOP OF CURB

- ✕ FD. Ramset Nail on T/C
- FD. LD. & TK. on T/C
- FD. "C" Nail on T/C
- Set LD. & TK. on T/C

Scale:  
 Date:  
 Drawn by:  
 W.O.:  
 F.B.:

**OFFICIAL TIE PLAT**  
**CITY OF RIVERSIDE**

*These ties are for the purpose of perpetuating the found monumentation. No claim is made as to the relationship of the points or lines shown hereon to true boundary locations.*

Sheet 1 of 1  
 File No.: