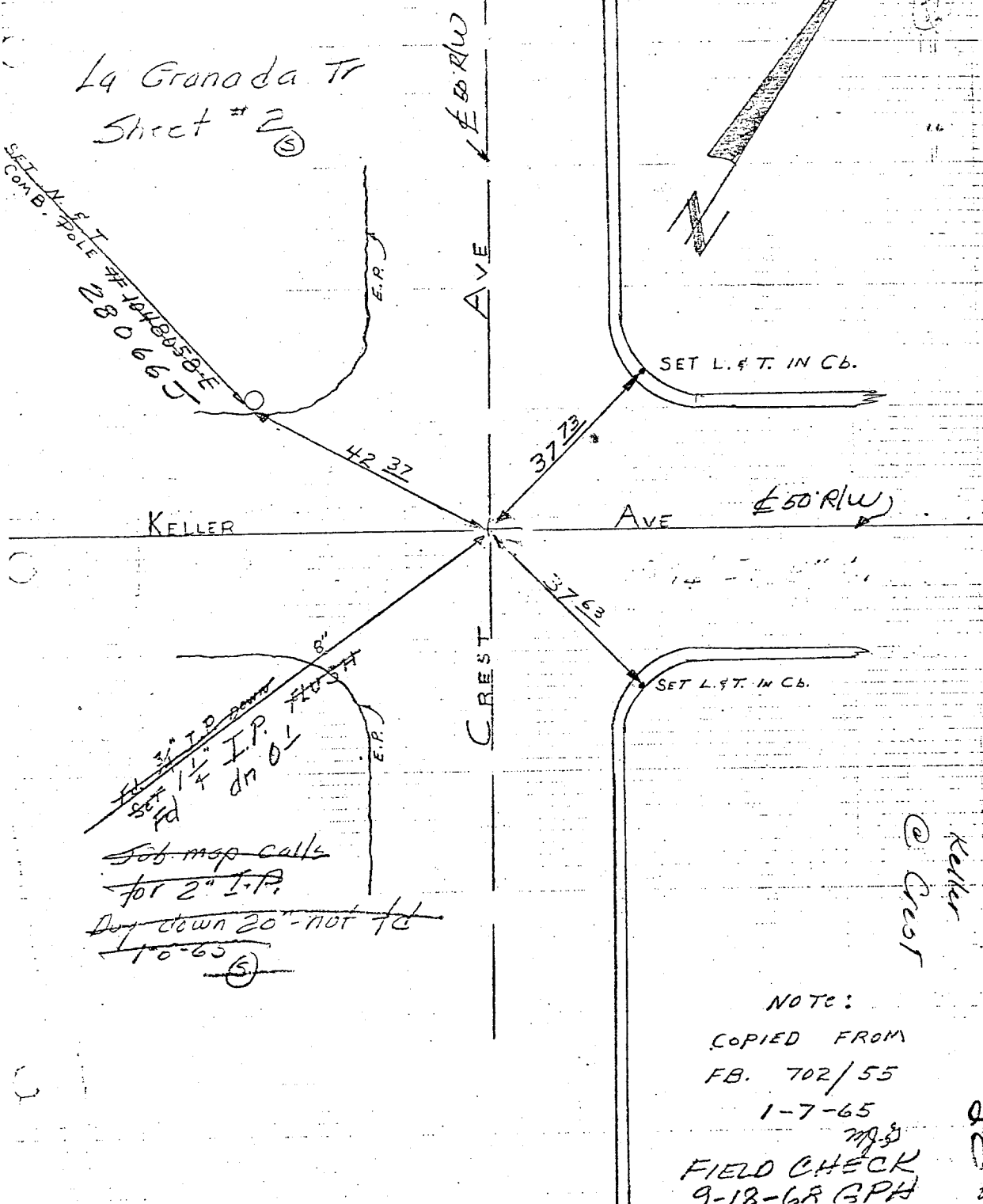


Street: **Keller**
10397 TIF

X-Street: **Crest**
OFFICIAL USE ONLY



La Granada Tr
Sheet # 2 (5)

SET N. & T. TOLE #71048058-E
280.66 J

3" I.P. down
set
1 1/4" I.P.
dn
Job map calls
for 2" I.P.
Dig down 20" - not fd
10-65 (5)

SET L. & T. IN Cb.

SET L. & T. IN Cb.

NOTE:
COPIED FROM
FB. 702/55
1-7-65
783
FIELD CHECK
9-18-68 GPH

Keller
@ Crest

- ✕ FD. Ramset Nail on T/C
- FD. LD. & TK. on T/C
- FD. "C" Nail on T/C
- Set LD. & TK. on T/C

Scale:
Date:
Drawn by:
W.O.:
F.B.:

OFFICIAL TIE PLAT CITY OF RIVERSIDE

These ties are for the purpose of perpetuating the found monumentation. No claim is made as to the relationship of the points or lines shown hereon to true boundary locations.

Sheet 1 of 1
File No.:

1-28-65
28