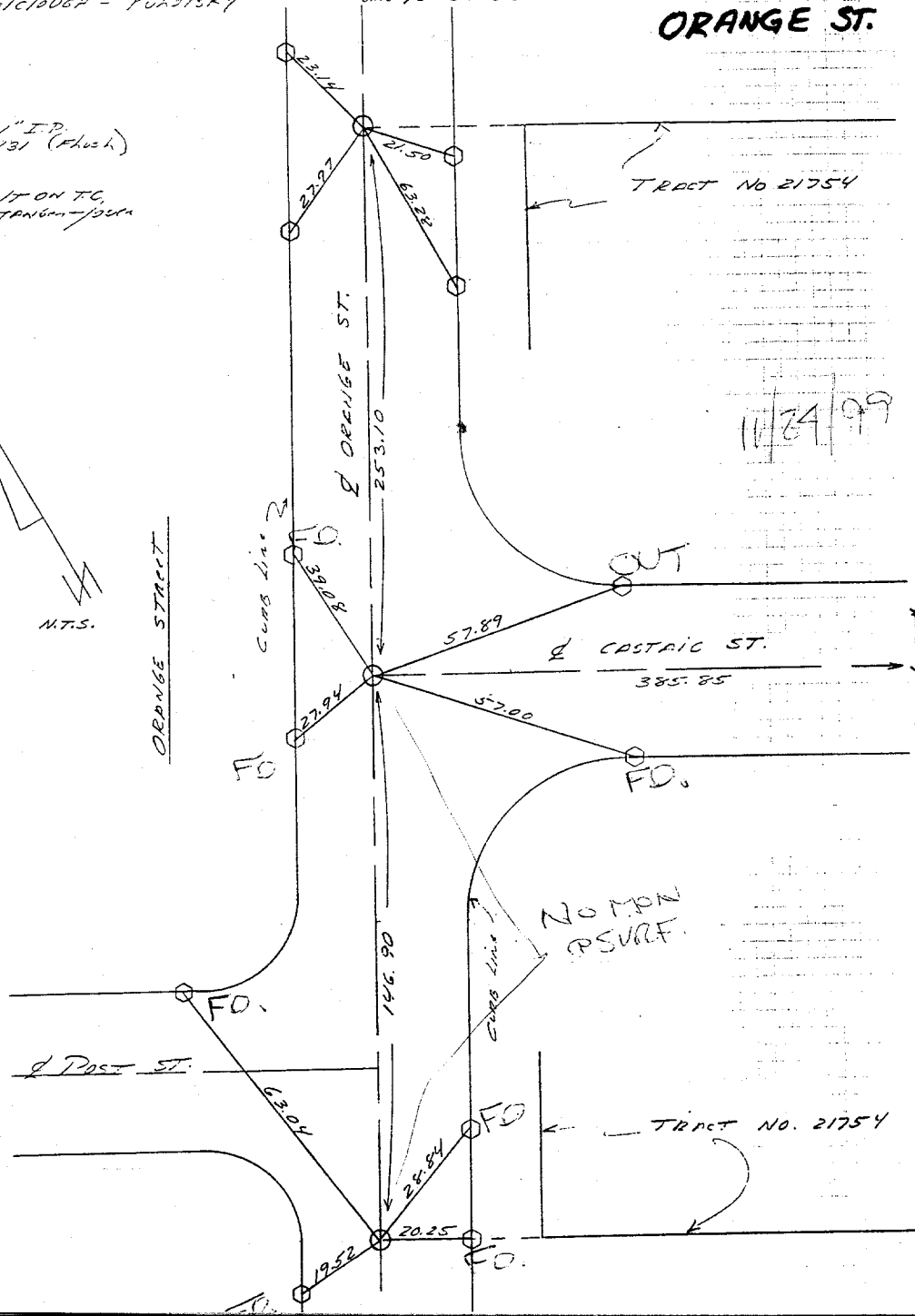
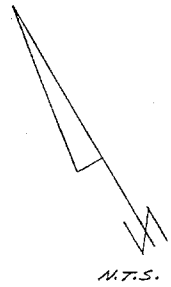


ORANGE ST.

- SET 1" I.P. 15 4731 (Flush)
- SET 1/2" ON T.C. NON-TRANSIT 1954



Street: **Orange**

X-Street: **Post**

OFFICIAL USE ONLY

- FD. Ramset Nail on T/C
- FD. LD. & TK. on T/C
- FD. "C" Nail on T/C
- Set LD. & TK. on T/C

Scale: _____
 Date: _____
 Drawn by: _____
 W.O.: _____
 F.B.: _____

OFFICIAL TIE PLAT

CITY OF RIVERSIDE

These ties are for the purpose of perpetuating the found monumentation. No claim is made as to the relationship of the points or lines shown hereon to true boundary locations.

Sheet 1 of 1
 File No.: _____

11/24/99