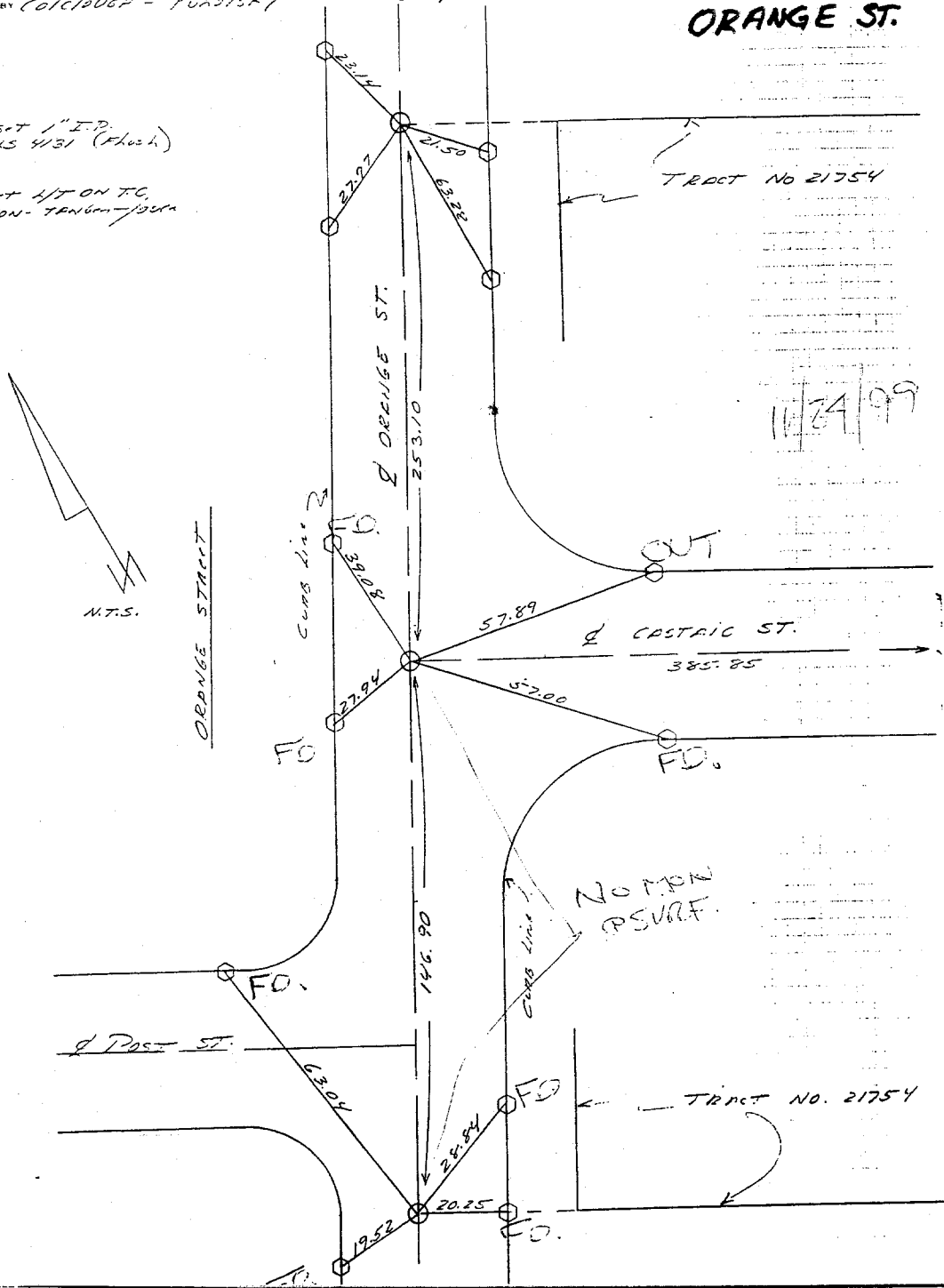
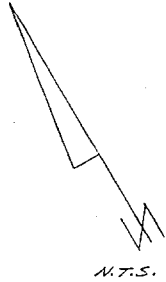


ORANGE ST.

- SET 1" I.P. 15 4131 (Fluor.)
- SET 1/2" ON T.C. NON-TRANSFERABLE



- ✗ FD. Ramset Nail on T/C
- FD. LD. & TK. on T/C
- FD. "C" Nail on T/C
- Set LD. & TK. on T/C

Street: **Orange**
18423 TIE
 OFFICIAL USE ONLY
 X-Street: **Castaic**

Scale:
 Date:
 Drawn by:
 W.O.:
 F.B.:

OFFICIAL TIE PLAT
CITY OF RIVERSIDE

These ties are for the purpose of perpetuating the found monumentation. No claim is made as to the relationship of the points or lines shown hereon to true boundary locations.

Sheet 1 of 1
 File No.: