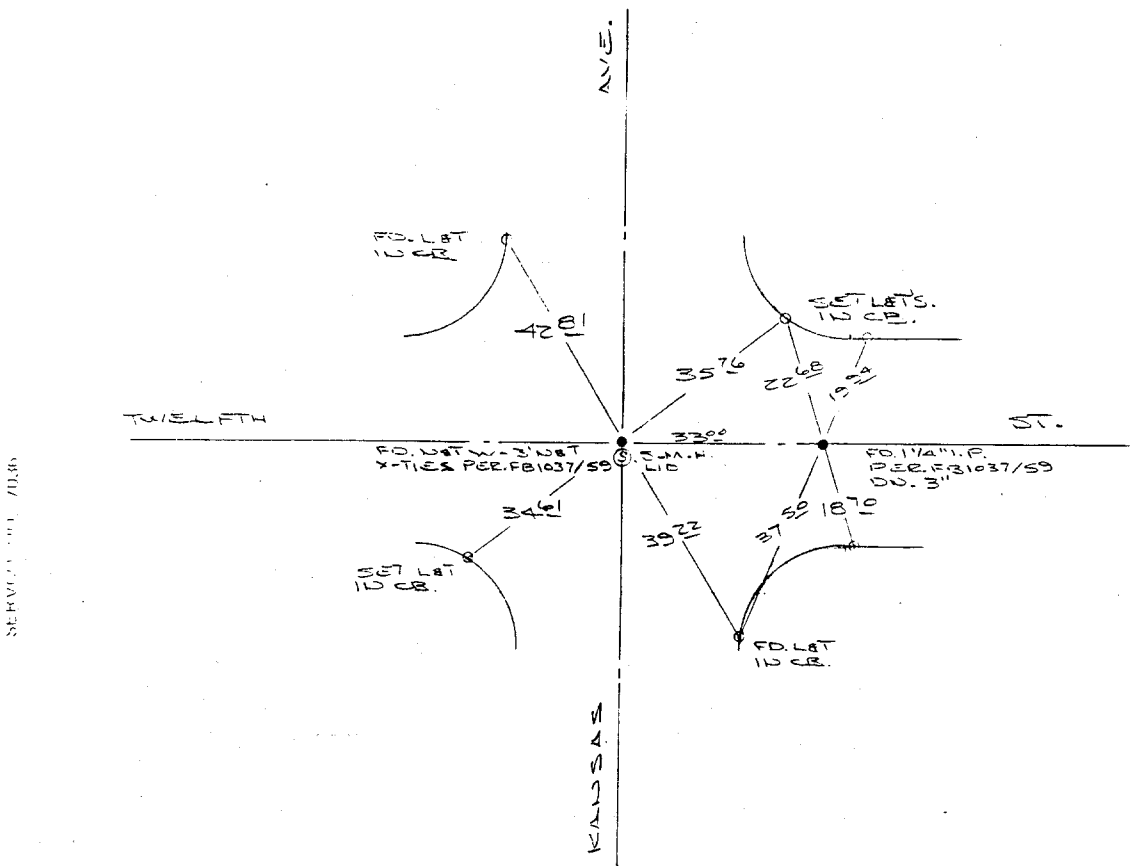


Street: KANSAS
1042.716
 X-Street: 12th
 OFFICIAL USE ONLY

HISTORICAL
 PLAT
 ORIGINAL
 ORIGINAL 10/22/59
 ORIGINAL 10/27/59

TRANSIT TIES



- ✕ FD. Ramset Nail on T/C
- FD. LD. & TK. on T/C
- FD. "C" Nail on T/C
- Set LD. & TK. on T/C

Scale:
 Date:
 Drawn by:
 W.O.:
 F.B.:

OFFICIAL TIE PLAT CITY OF RIVERSIDE

These ties are for the purpose of perpetuating the found monumentation. No claim is made as to the relationship of the points or lines shown hereon to true boundary locations.

Sheet 1 of 1
 File No.: