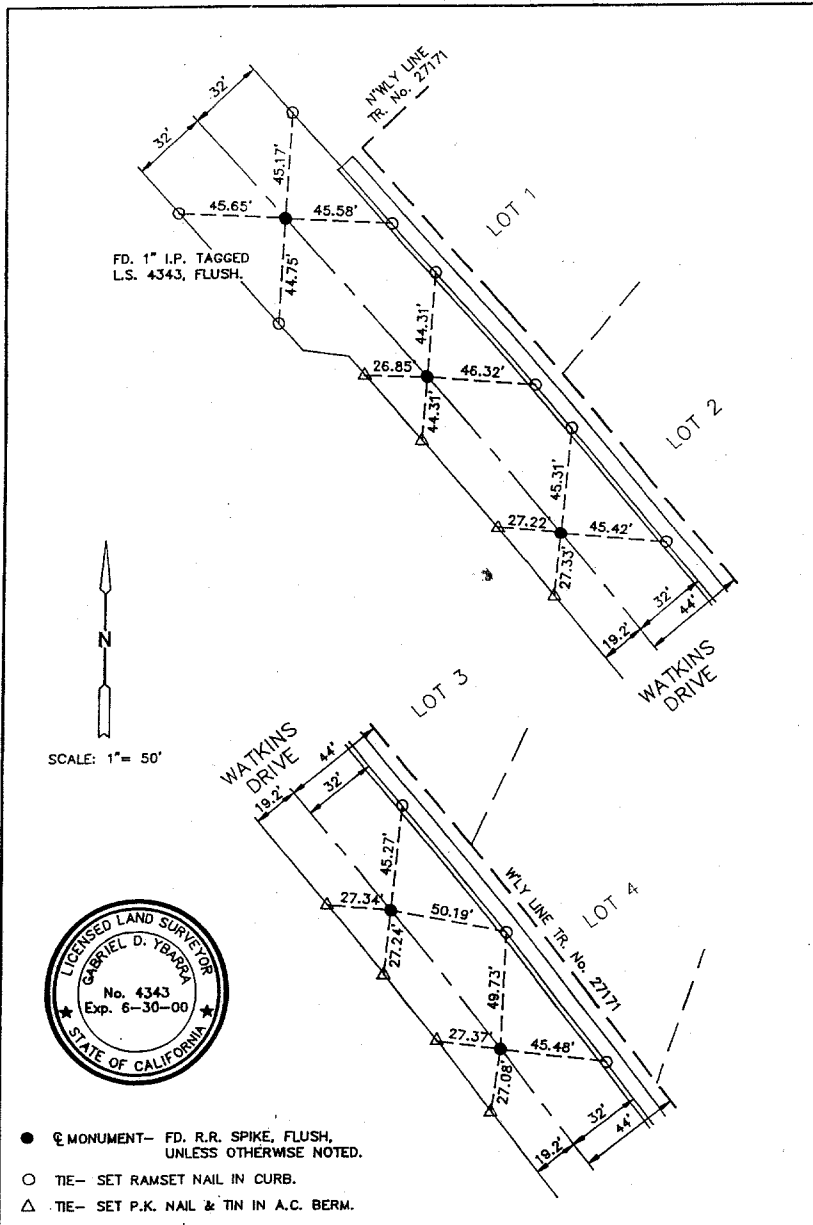


Street: **Watkins**
1971.71E

OFFICIAL USE ONLY

X-Street:



ACTION SURVEYS 4883 JONES AVENUE RIVERSIDE, CA 92505 (909) 689-8446 (909) 689-6816 FAX	TRACT No. 27171 CITY OF RIVERSIDE
	CENTERLINE TIES WATKINS DRIVE
<i>Gabriel D. Ybarra</i> 8-20-98 GABRIEL D. YBARRA / L.S. 4343 DATE	SHEET 2 OF 2 SHEETS
DATE: JULY 1998	SCALE: 1" = 50'

- ✗ FD. Ramset Nail on T/C
- FD. "C" Nail on T/C

- FD. LD. & TK. on T/C
- Set LD. & TK. on T/C

Scale:

Date:

Drawn by:

W.O.:

F.B.:

OFFICIAL TIE PLAT
CITY OF RIVERSIDE

These ties are for the purpose of perpetuating the found monumentation. No claim is made as to the relationship of the points or lines shown hereon to true boundary locations.

Sheet 1 of 1

File No.: