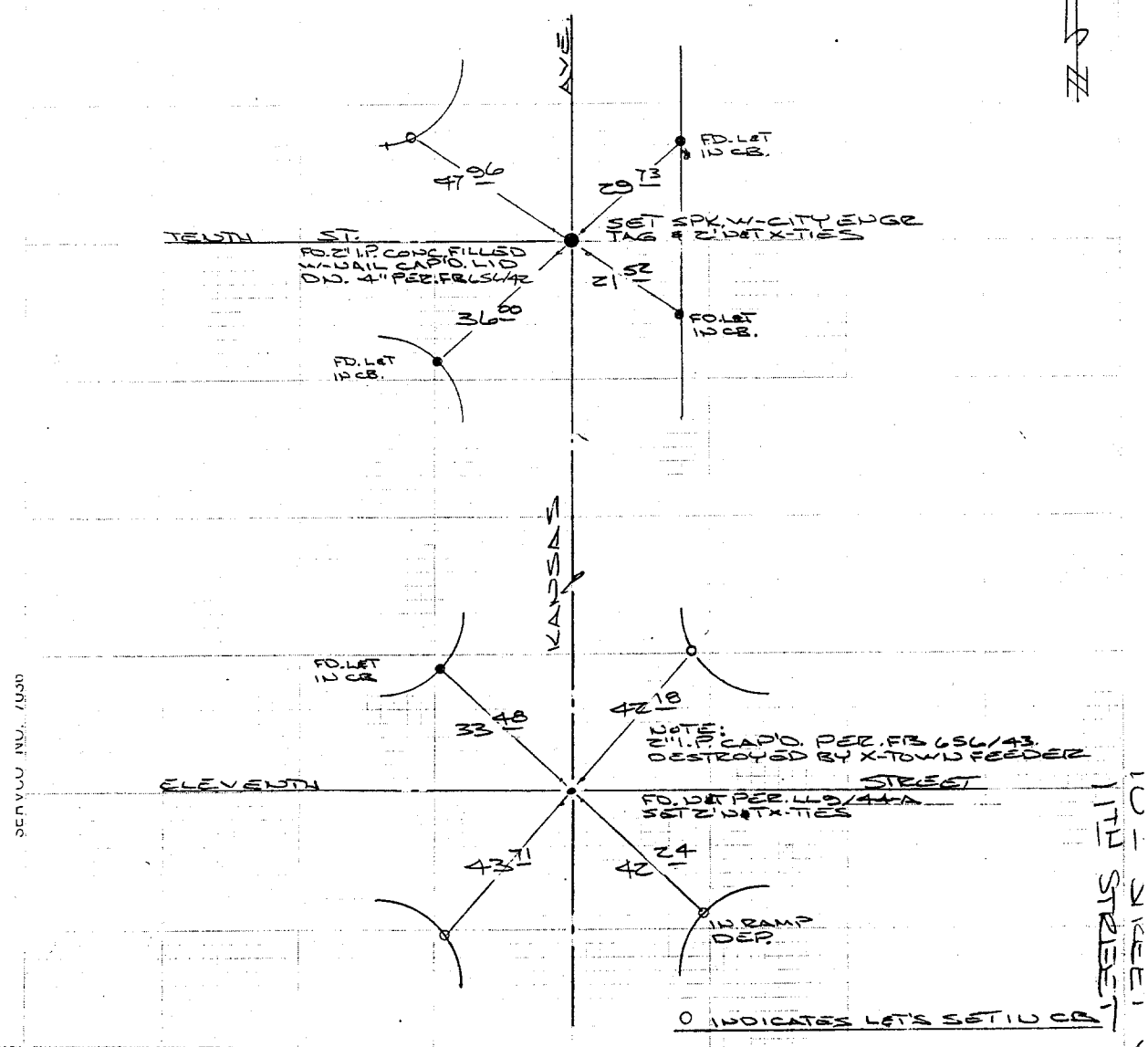


HISTORICAL DATA
CRFB 656/42843
CRFB 057/2
LL9/44A

TRANSIT TIES

Street: 11th  
10473.71F  
 X-Street: KANSAS

OFFICIAL USE ONLY



- FD. Ramset Nail on T/C
- FD. LD. & TK. on T/C
- FD. "C" Nail on T/C
- Set LD. & TK. on T/C

Scale: \_\_\_\_\_  
 Date: \_\_\_\_\_  
 Drawn by: \_\_\_\_\_  
 W.O.: \_\_\_\_\_  
 F.B.: \_\_\_\_\_

**OFFICIAL TIE PLAT**  
**CITY OF RIVERSIDE**

*These ties are for the purpose of perpetuating the found monumentation. No claim is made as to the relationship of the points or lines shown hereon to true boundary locations.*

Sheet 1 of 1  
 File No.: \_\_\_\_\_