

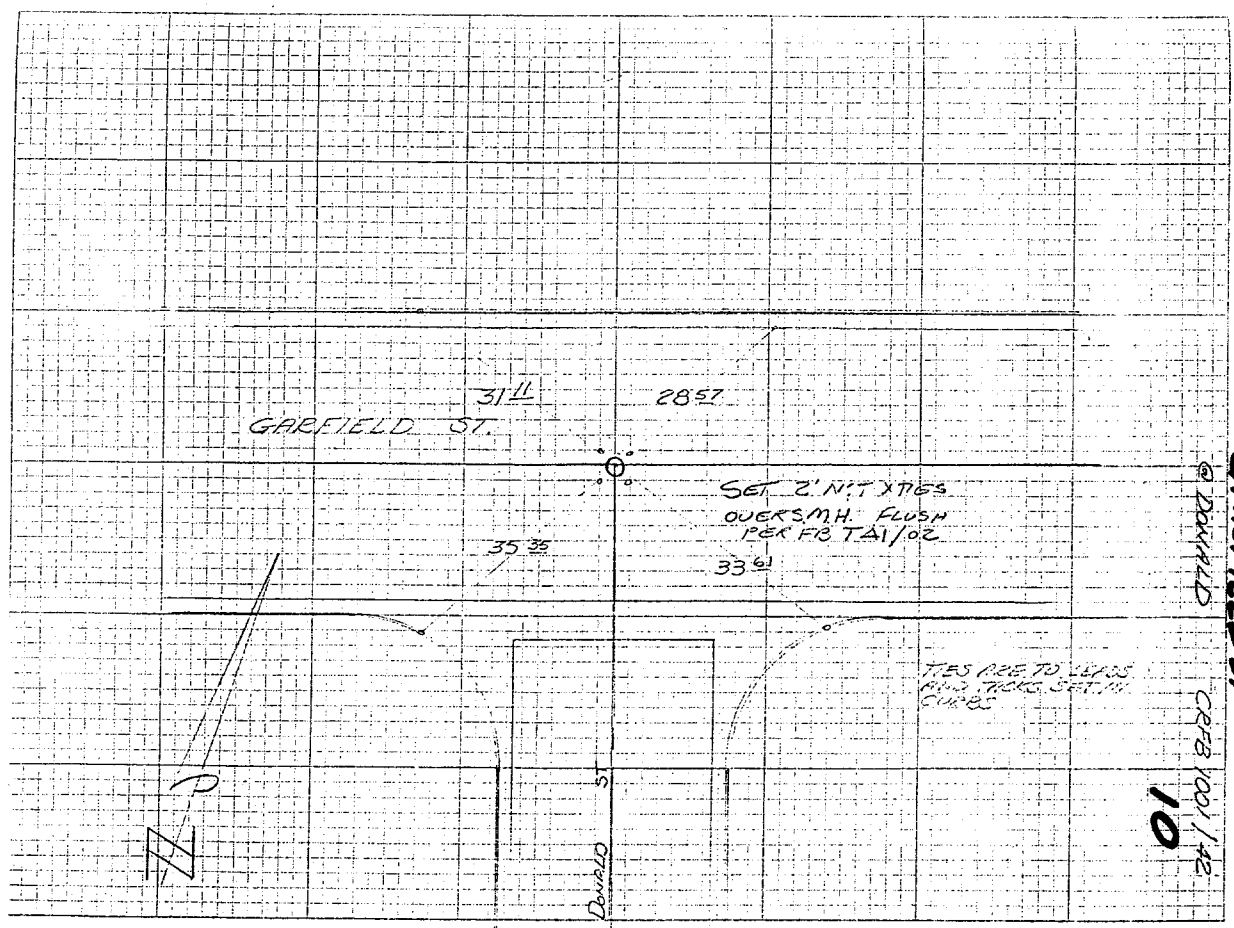
Street: **Garfield**
10474 TIP

X-Street: **Donald**
 OFFICIAL USE ONLY

HISTORICAL DATA
 FB 1001/42
 F.B.T. A1/02
 FB 615/15
 FB 600/14, 15

TRANSIT TIES
 GARFIELD ST
 AT DONALD

CREW
 MONTAGUE
 HART
 MRS KAY
 DEC 22, 1976
 CRFB 1001/42



- ✕ FD. Ramset Nail on T/C
- FD. "C" Nail on T/C

- FD. LD. & TK. on T/C
- Set LD. & TK. on T/C

Scale:
 Date:
 Drawn by:
 W.O.:
 F.B.:

OFFICIAL TIE PLAT

CITY OF RIVERSIDE

These ties are for the purpose of perpetuating the found monumentation. No claim is made as to the relationship of the points or lines shown hereon to true boundary locations.

Sheet 1 of 1
 File No.: