

Street: **JOHN**
10490, TIF

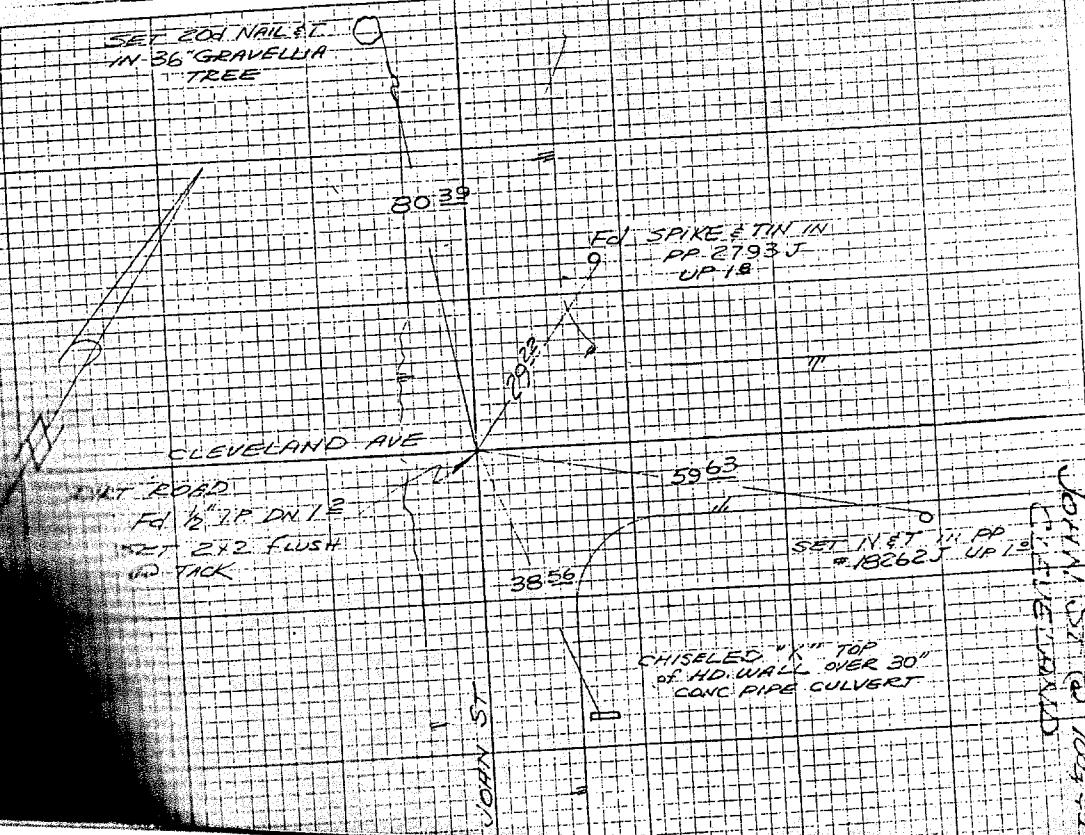
X-Street:
OFFICIAL USE ONLY

Cleveland

HISTORICAL DATA
REF 201/42
FB V-32

SWING TIES
CLEVELAND AVE
@
JOHN ST.
FB 1009/40

CREW
MONTAGUE
HILL
GARCIA
JAN 25, 1978



- ✕ FD. Ramset Nail on T/C
- FD. "C" Nail on T/C
- FD. LD. & TK. on T/C
- Set LD. & TK. on T/C

Scale:
Date:
Drawn by:
V.O.:
B.:

OFFICIAL TIE PLAT CITY OF RIVERSIDE

These ties are for the purpose of perpetuating the found monumentation. No claim is made as to the relationship of the points or lines shown hereon to true boundary locations.

Sheet 1 of 1
File No.: