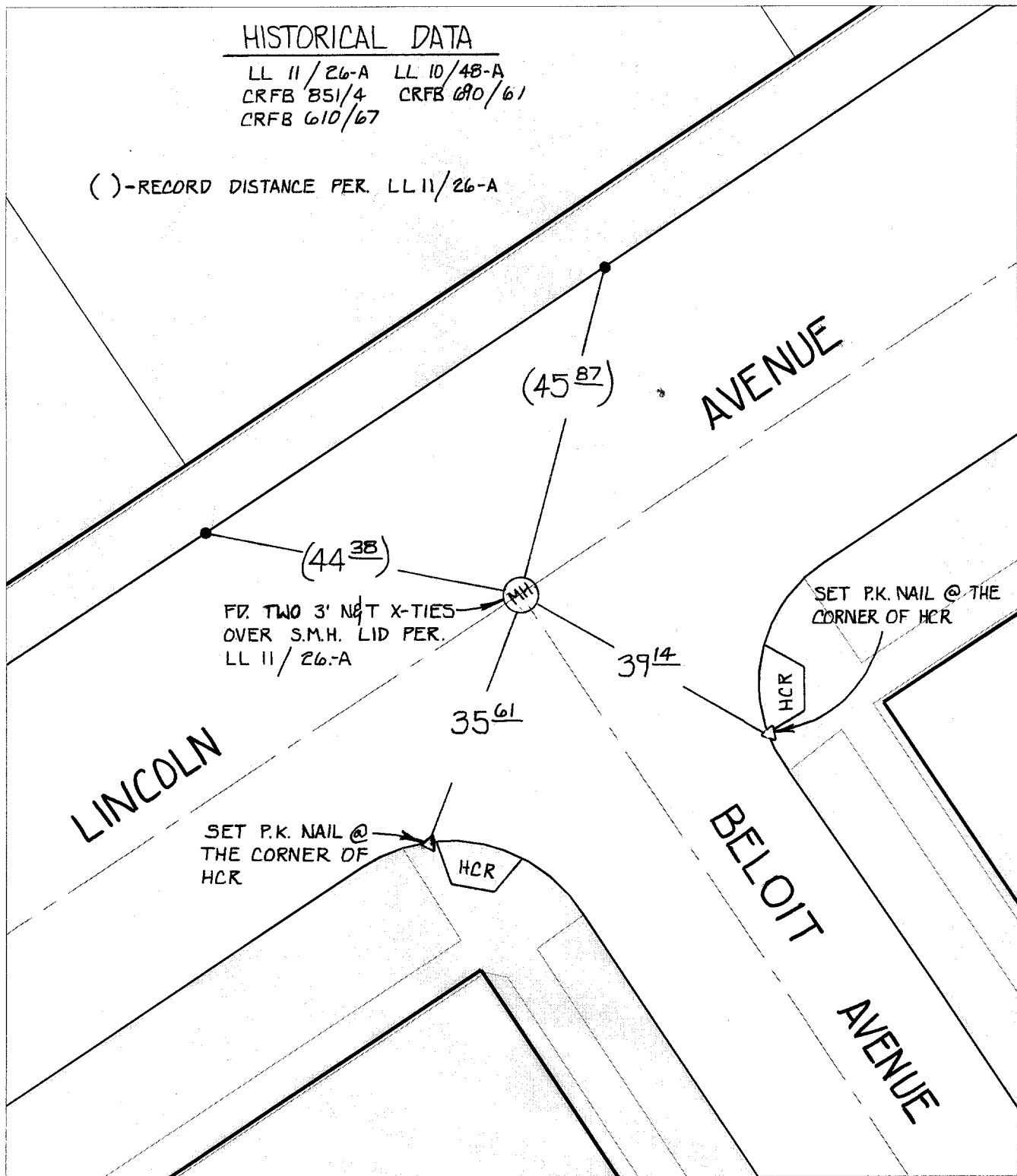


SWING TIES

HISTORICAL DATA

LL 11/26-A LL 10/48-A
 CRFB 851/4 CRFB 690/61
 CRFB 610/67

() - RECORD DISTANCE PER. LL 11/26-A



× FD. Ramset Nail on T/C
 ■ FD. "C" Nail on T/C

● FD. LD. & TK. on T/C
 ○ Set LD. & TK. on T/C

Street: **105410.71E** LINCOLN AVENUE
 X-Street: OFFICIAL USE ONLY
 BELOIT AVENUE

Scale: 1" = 20'

Date: 02/10/00

Drawn by: SURVEY

W.O.:

F.B.:

OFFICIAL TIE PLAT CITY OF RIVERSIDE

These ties are for the purpose of perpetuating the found monumentation. No claim is made as to the relationship of the points or lines shown hereon to true boundary locations.



Sheet 1 of 1

File No.: