

TRANSIT & SWING TIES

Street:

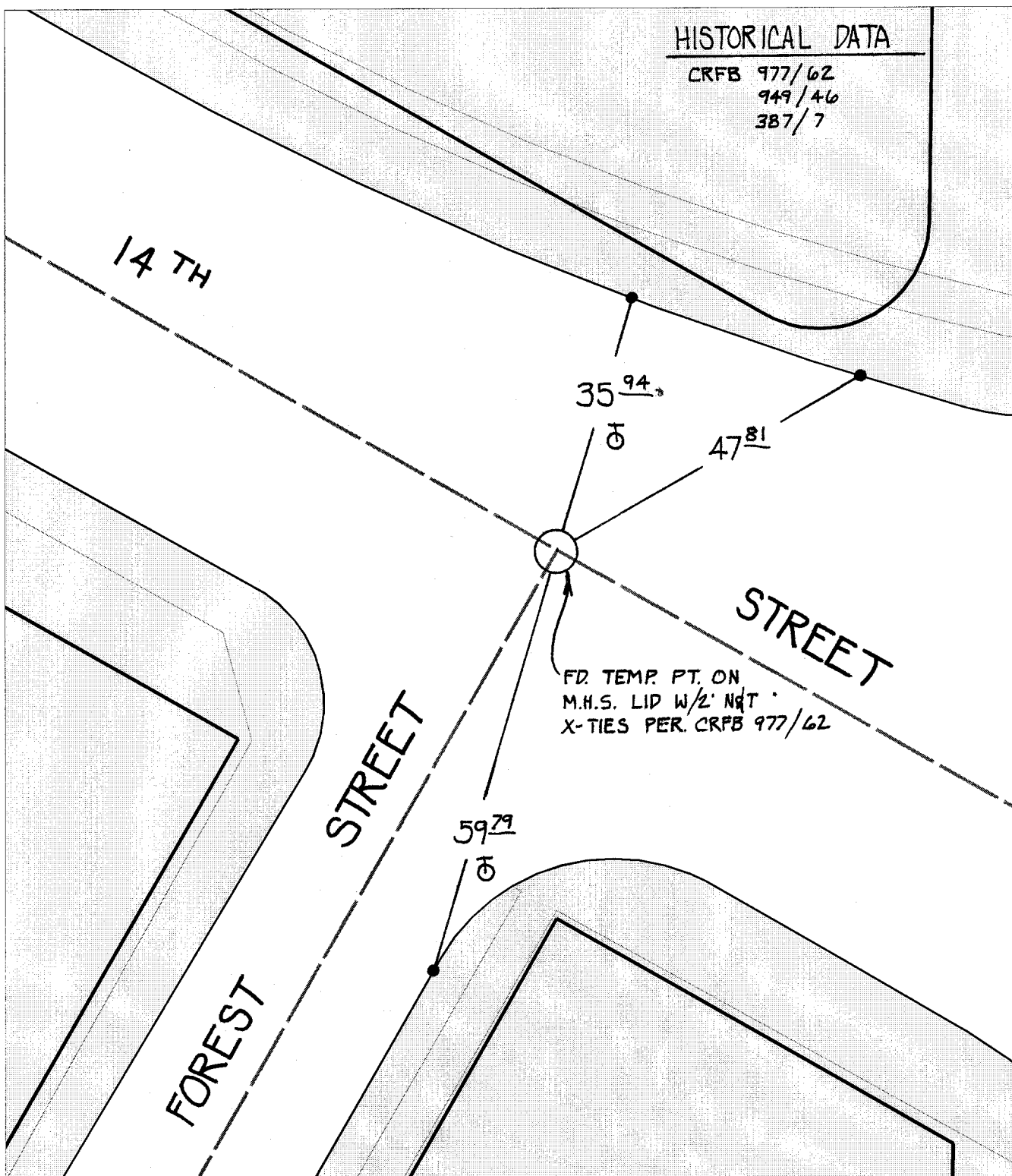
10547.71E
14TH ST

X-Street:
OFFICIAL USE ONLY

FOREST ST

HISTORICAL DATA

CRFB 977/62
949/46
387/7



- ✕ FD. Ramset Nail on T/C
- FD. "C" Nail on T/C

- FD. LD. & TK. on T/C
- Set LD. & TK. on T/C

Scale: 1" = 20'

Date: 12/17/99

Drawn by: scurtis

W.O.:

F.B.:

OFFICIAL TIE PLAT CITY OF RIVERSIDE

These ties are for the purpose of perpetuating the found monumentation. No claim is made as to the relationship of the points or lines shown hereon to true boundary locations.



Sheet 1 of 1

File No.: