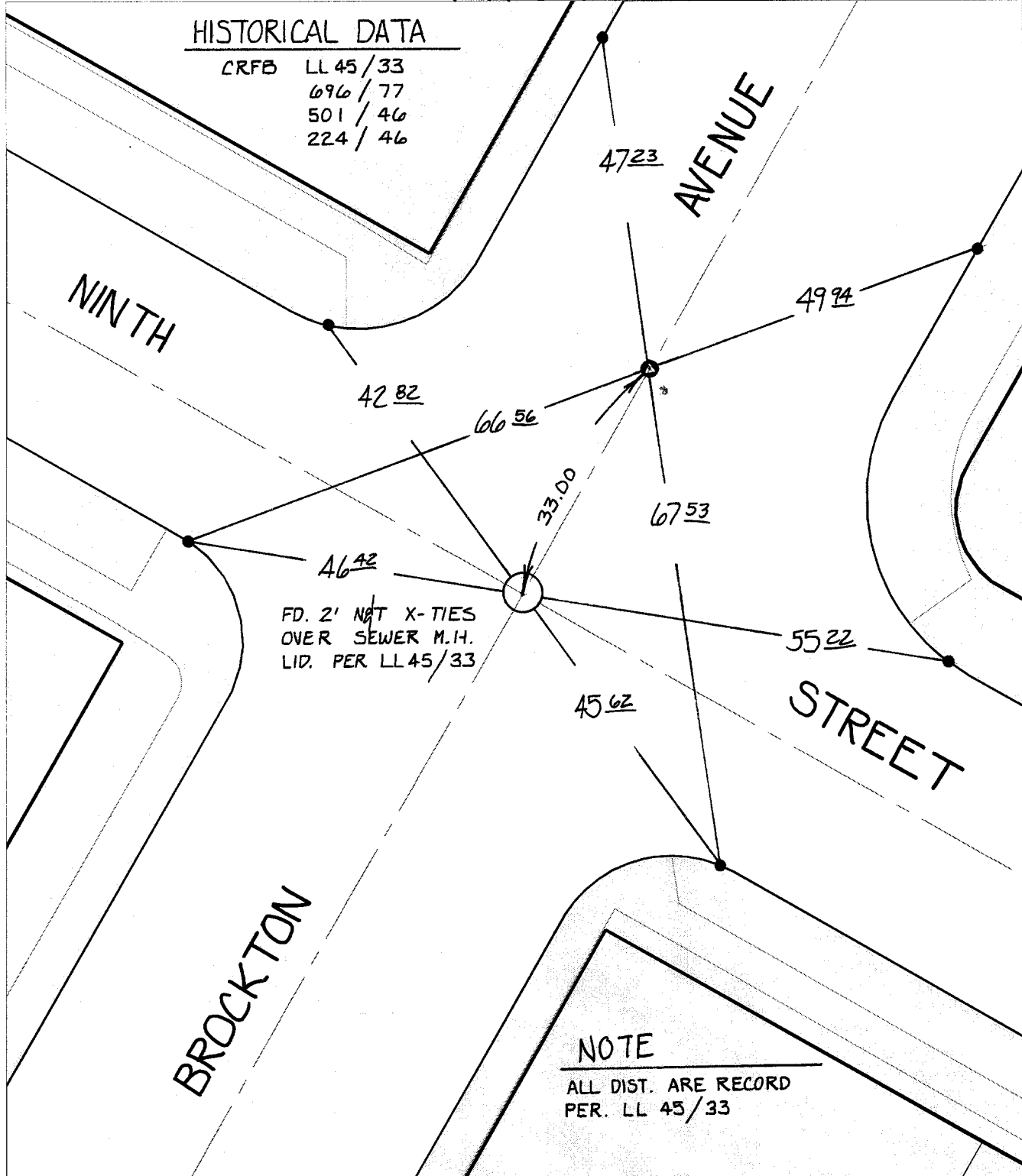


TRANSIT TIES

HISTORICAL DATA

CRFB LL 45/33
 696 / 77
 501 / 46
 224 / 46



Street: BROCKTON AVENUE
 10553.11F
 X-Street: NINTH STREET
 OFFICIAL USE ONLY

FD. 2' NOT X-TIES
 OVER SEWER M.H.
 LID. PER LL 45/33

NOTE
 ALL DIST. ARE RECORD
 PER. LL 45/33

✕ FD. Ramset Nail on T/C
 ■ FD. "C" Nail on T/C

● FD. LD. & TK. on T/C
 ○ Set LD. & TK. on T/C

Scale: 1" = 20'

Date: 10/20/98

Drawn by: SURVEY

W.O.:

F.B.:

OFFICIAL TIE PLAT
 CITY OF RIVERSIDE

*These ties are for the purpose of perpetuating the found
 monumentation. No claim is made as to the relationship of
 the points or lines shown hereon to true boundary locations.*



Sheet 1 of 1

File No.: