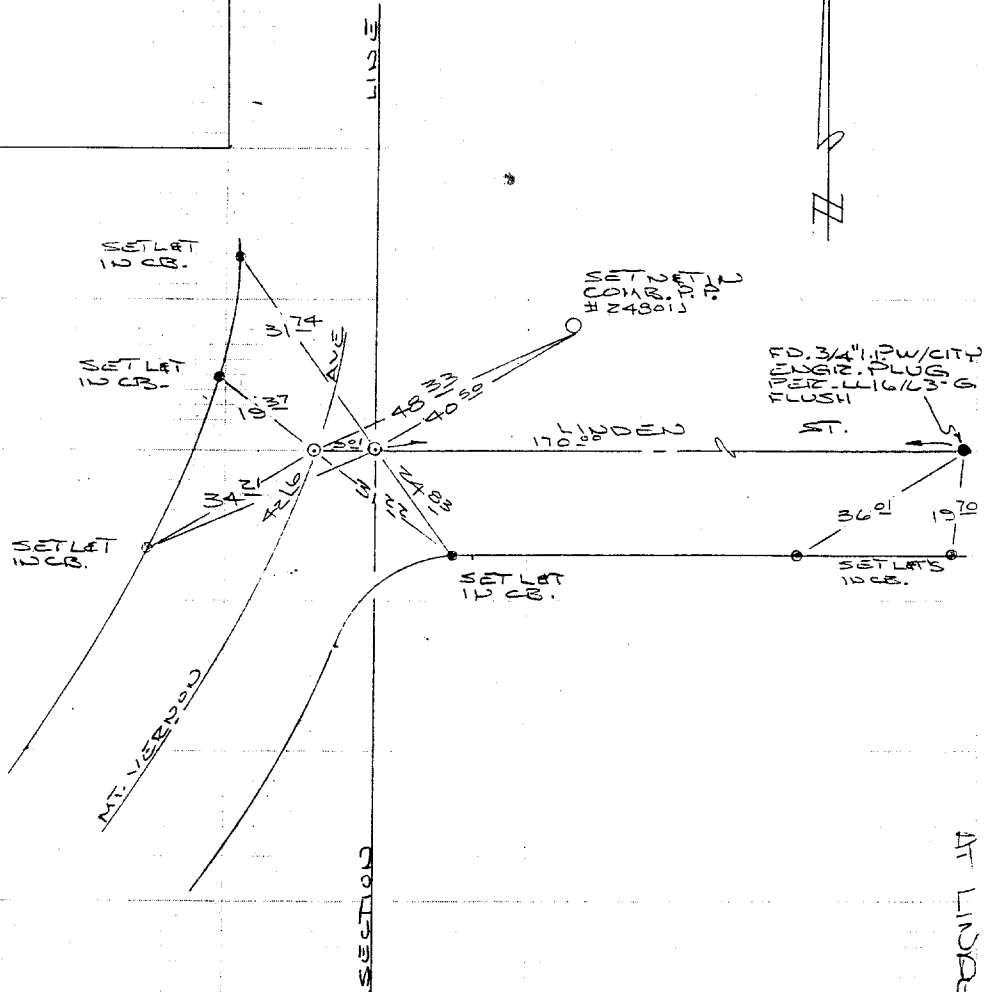


**HISTORICAL DATA**  
 FL16/L2802-A & L3-G  
 PARCEL MAP 21260

**TRANSIT SWING TIES**



SERVULO INV. 7/1980

MT. VERNON AVE  
AT LINDEN ST

- ✕ FD. Ramset Nail on T/C
- FD. "C" Nail on T/C

- FD. LD. & TK. on T/C
- Set LD. & TK. on T/C

Scale:  
 Date:  
 Drawn by:  
 W.O.:  
 F.B.:

**OFFICIAL TIE PLAT**  
**CITY OF RIVERSIDE**

*These ties are for the purpose of perpetuating the found monumentation. No claim is made as to the relationship of the points or lines shown hereon to true boundary locations.*

Sheet 1 of 1  
 File No.:

Street: **MT. VERNON**  
**10607.11F**  
 X-Street: **LINDEN**  
 OFFICIAL USE ONLY