

Scale:
Date:
Drawn by:
W.O.:
F.B.:

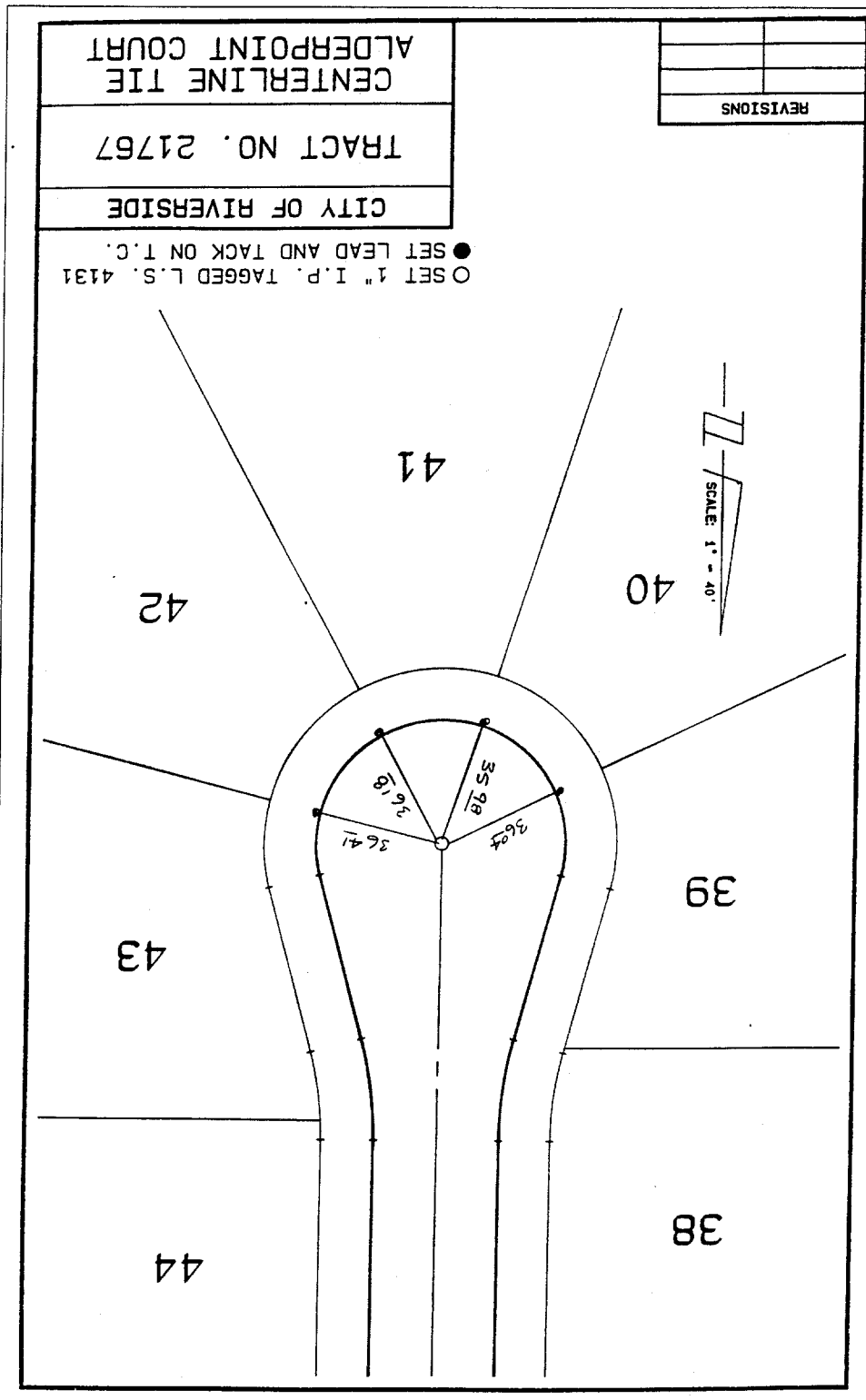
OFFICIAL TIE PLAT

CITY OF RIVERSIDE

These ties are for the purpose of perpetuating the found monumentation. No claim is made as to the relationship of the points or lines shown hereon to true boundary locations.

Sheet 1 of 1
File No.:

× FD. Ramset Nail on T/C
● FD. LD. & TK. on T/C
○ Set LD. & TK. on T/C



○ SET 1" I.P. TAGGED L.S. 4131
● SET LEAD AND TACK ON T.C.

CITY OF RIVERSIDE
TRACT NO. 21767
CENTERLINE TIE
ALDERPOINT COURT

REVISIONS	

Street: ALDERPOINT CT X-Street: 106. TIF
OFFICIAL USE ONLY

ALDERPOINT CT.