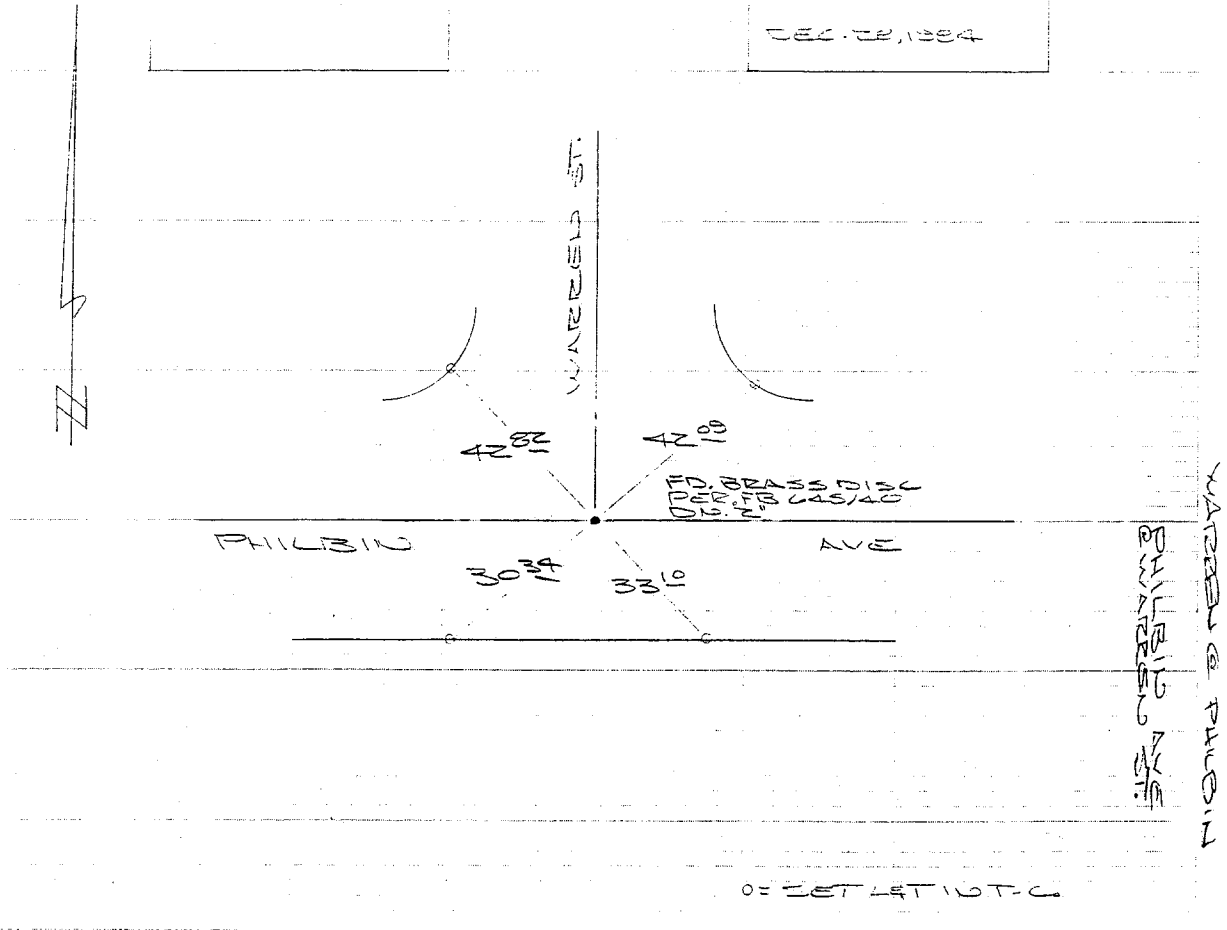


Street: **WARREN**
10000.71E
 OFFICIAL USE ONLY
 X-Street: **PHILBIN**

HISTORICAL DATA	TRANSITTES	CREW
FB 645/40		KIM JAY GUY NOLAN L.L. DEC. 28, 1984



- ✕ FD. Ramset Nail on T/C
- FD. LD. & TK. on T/C
- FD. "C" Nail on T/C
- Set LD. & TK. on T/C

Scale: _____
 Date: _____
 Drawn by: _____
 W.O.: _____
 F.B.: _____

OFFICIAL TIE PLAT

CITY OF RIVERSIDE

These ties are for the purpose of perpetuating the found monumentation. No claim is made as to the relationship of the points or lines shown hereon to true boundary locations.

Sheet 1 of 1
 File No.: _____