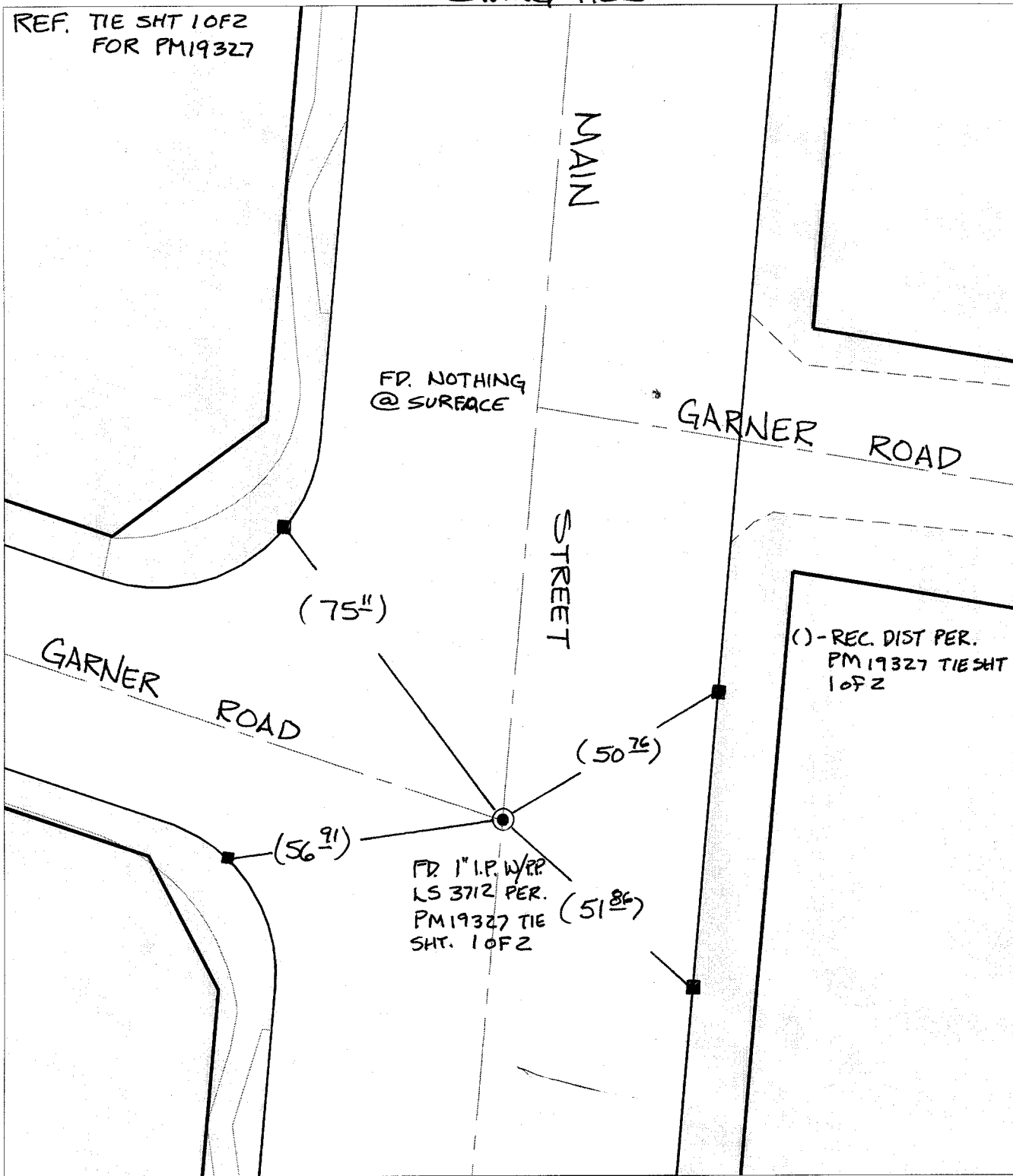


SWING TIES

REF. TIE SHT 10F2  
FOR PM19327



Street: 10622 MAIN STREET  
X-Street: GARNER ROAD  
OFFICIAL USE ONLY


- ✕ FD. Ramset Nail on T/C      ● FD. LD. & TK. on T/C      P.K. and City Engineer tag to be set @ surface after street construction is complete. (If possible)
- FD. "C" Nail on T/C      ○ Set LD. & TK. on T/C

Scale: 1" = 20'  
Date: 06/29/02  
Drawn by: SURVEY  
F.B.:  
TR-Sec: -

## OFFICIAL TIE PLAT

### CITY OF RIVERSIDE

*These ties are for the purpose of perpetuating the found monumentation. No claim is made as to the relationship of the points or lines shown hereon to true boundary locations.*



Sheet 1 of 1  
Cadme MB: 10-3